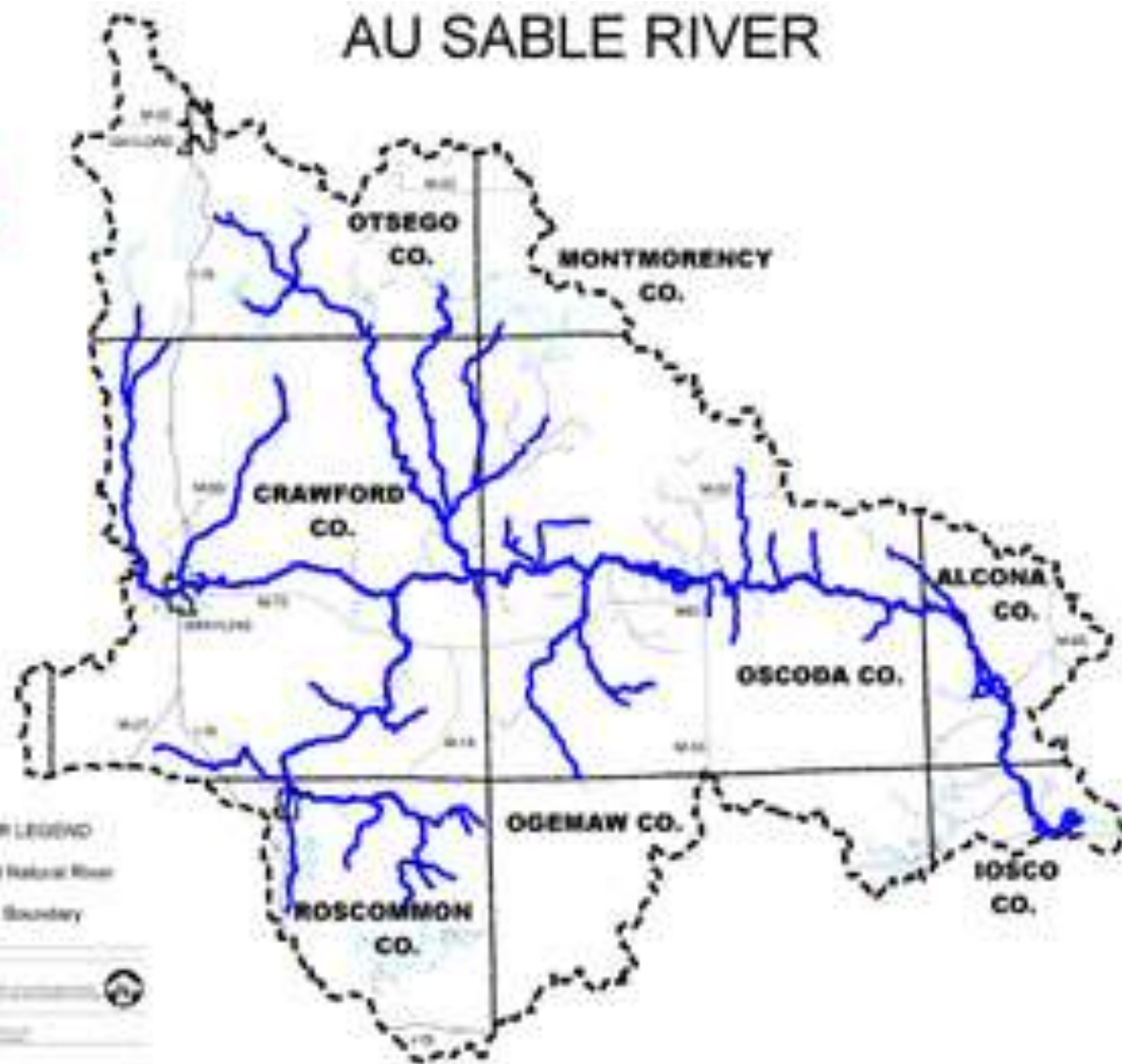




Riparian Management Along the AuSable River

**MDNR Grayling Forest
Management Unit**

AU SABLE RIVER



AU SABLE RIVER LEGEND

Designated National River

Watershed Boundary

Scale:



Michigan Department of Environment, Great Lakes & Energy

Division of Water Resources





W. SALLING of Montreal, Mich.

A. HALL of Grayling, Mich.

N. MILLER of Grayling, Mich.

SALLING, HANSON & Co.

LUMBER



MANUFACTURERS

LOGS, LUMBER, GENERAL MERCHANDISE & LUMBERMEN'S SUPPLIES.



43281



043120

LOGS AD 190





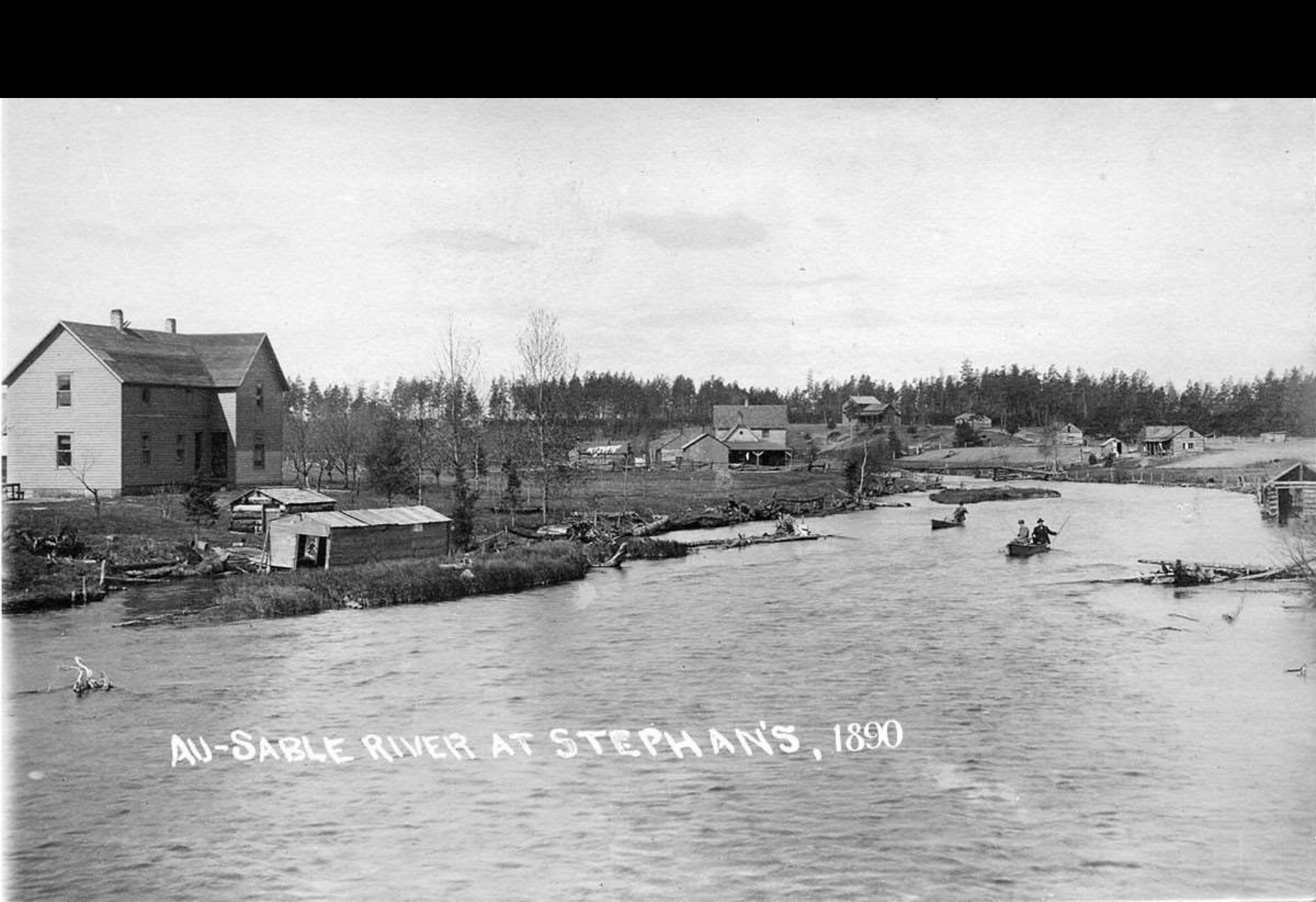
AFTER LOGGING AND FIRE



Winter View of Mio. County - Seat of Oscoda Co. in Jack Pine Lands.
Taken by Randall of Mio.



IN THE BACK
A MORNING
CATCH AT S. W. STICK
MICH.



AU-SABLE RIVER AT STEPHAN'S, 1890





EXPERIMENT FARM AT GRAYLING.

no. 1. Looking S. of W. from a point 50 rds. E. & 50 rds. N. of S.W. corner.
May 23, 188



To the Anglers Club
Harris Tangle

Charles Babbitt

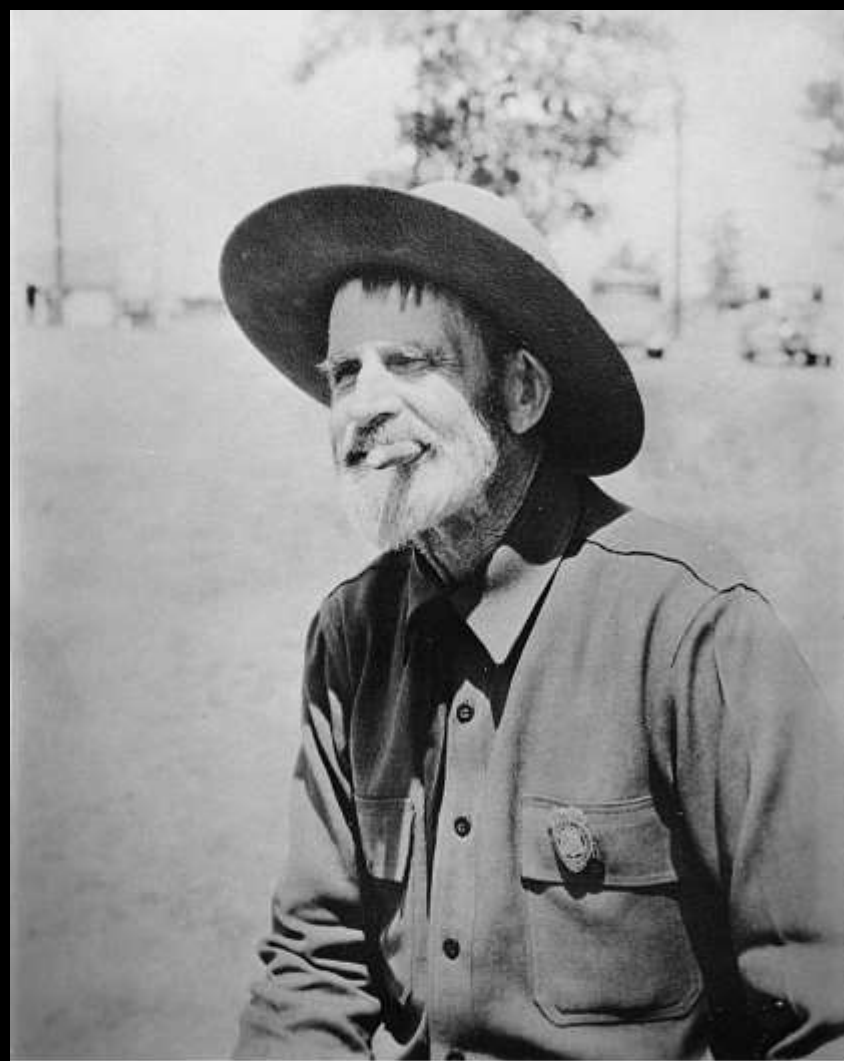
May 16 1930



STATE FISH HATCHERY ~ GRAYLING, MICH.

36768





Rube Babbitt - Conservation Officer



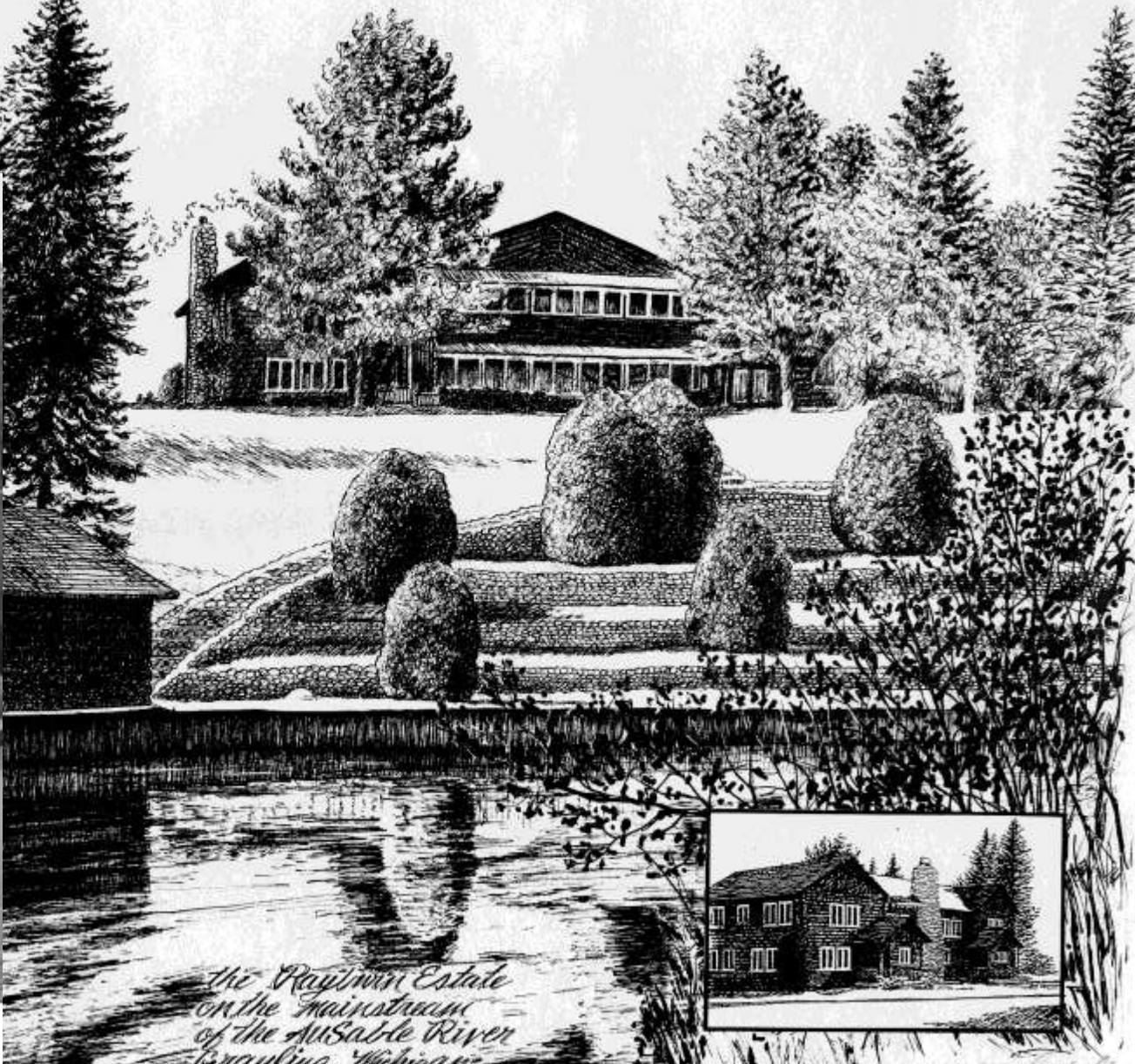
This pillow cover is one of the many CCC artifacts on display at the Michigan CCC Museum.





SUSPENSION BRIDGE 255 FT. LONG OVER
THE AU SABLE AT MC CLANAHAN LODGE
GRAYLING, MICH. 367124

Looking North across AuSable River at present
location of Rayburn Bridge



*The Rayburn Estate
on the Mainstream
of the AuSable River
Grayling, Michigan*





Cooke Dam, AuSable River, Oscoda, Mich.





AU SABLE RIVER NATURAL RIVER PLAN

ALCONA, CRAWFORD, TOSCO, MONTMORENCY,
OSCODA, OTSEGO, AND ROSCOMMON COUNTIES

JULY 1987



DNR  **FISHERIES DIVISION**

MICHIGAN DEPARTMENT OF
NATURAL RESOURCES
Revised March 12, 2002

Goal: To preserve, protect and enhance the river environment in a natural state for the use and enjoyment of present and future generations.

- To maintain water quality consistent with the designated classification...
- To prohibit development or activity which may damage the ecologic, aesthetic or historic values of the river and adjacent lands
- To ensure any development which may occur shall be done in an orderly manner consistent with the natural environment and aesthetic qualities of the stream
- To ensure that recreational uses which occur, be done in an orderly manner consistent with the natural environment and aesthetic qualities of the stream, and that a quality recreation experience is maintained.

How does the Natural River designation impact forest management and other management activities within the Riparian Management Zone?

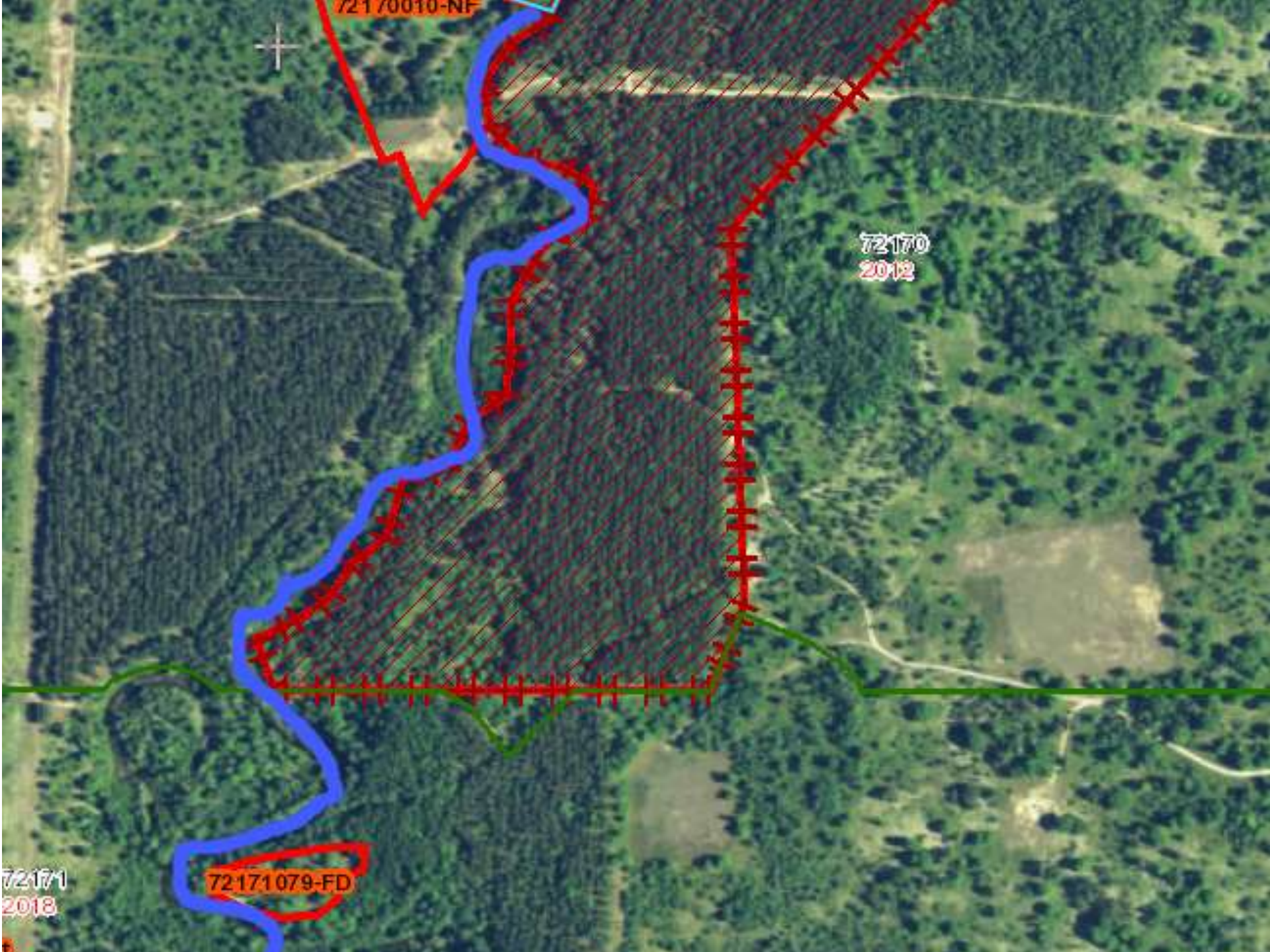
- Established a natural river zoning district of 400 feet wide on each side of the river/stream in which development and activity is regulated
- 150 foot minimum vegetation strip for state land along the mainstream, north branch and south branch, measured horizontally from the ordinary high water mark. The vegetation strip is reduced to 75 feet for private lands.
- Within the vegetation strip (riparian management zone) cutting and removal of vegetation is restricted. Removal of trees for commercial timber harvest, access or woodlot improvement shall be allowed upon specific approval of the DNR or its representative.
- No additional boat or canoe access sites shall be allowed for development. Existing sites may be modified to limit or control canoe access, erosion or to enhance aesthetic values.
- Motorized vehicles are prohibited unless on designated access or public roads











72170010-NF

72170
2012

72171
2018

72-171079-FD

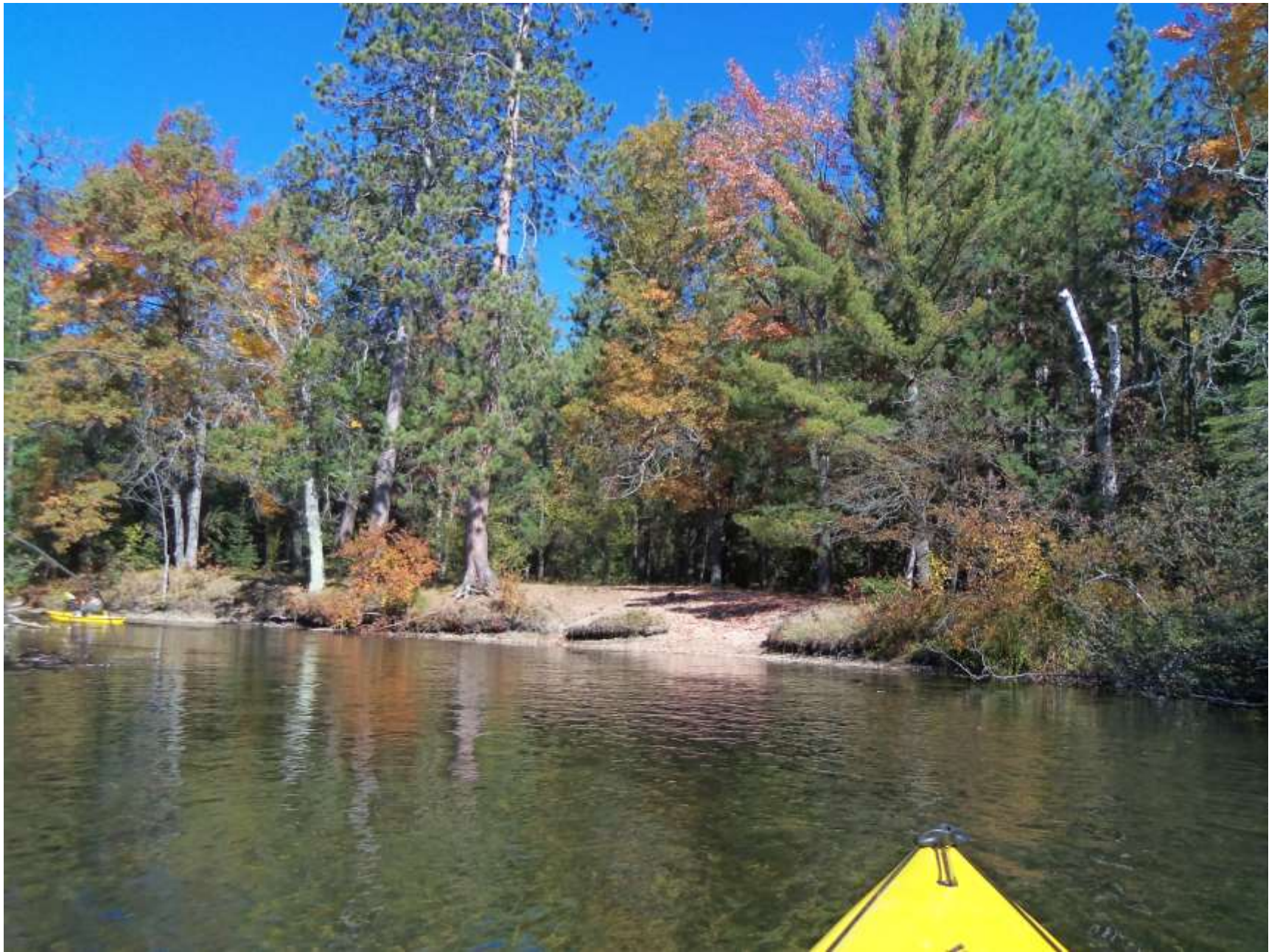


72001
2013

72001116-Monitor

72001116-Monitor





















Questions?