

# *Promoting community participation in watershed reforestation:*

Lessons from the

## **Lower Topanga Creek Riparian Oak Woodland Restoration project**



Presented by Elizabeth Montgomery  
MI Society of American Foresters Spring Conference  
*Forests For Fish*  
30 March 2017  
Marquette, Michigan



# 1

## KEEP A 'DREAM LIST' OF PROJECTS



**NOTES:**  
Special considerations are appropriate and should not be completed until descriptions. Maps are intended for study purposes only.

<b>GENERAL:</b> SUNNY SECTION	Date: 6/20/08 Project: City: Dept of Parks & Recreation Responsible: Public Land	
-------------------------------------	---	--





## Open canopy

- loss of thermal refuge
- loss of soil moisture

## Invasive plants

- low habitat value

## Degraded riparian buffer

- numerous ecological consequences

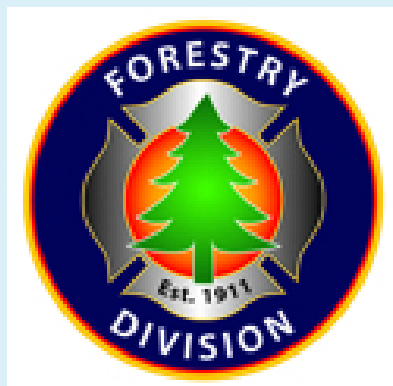
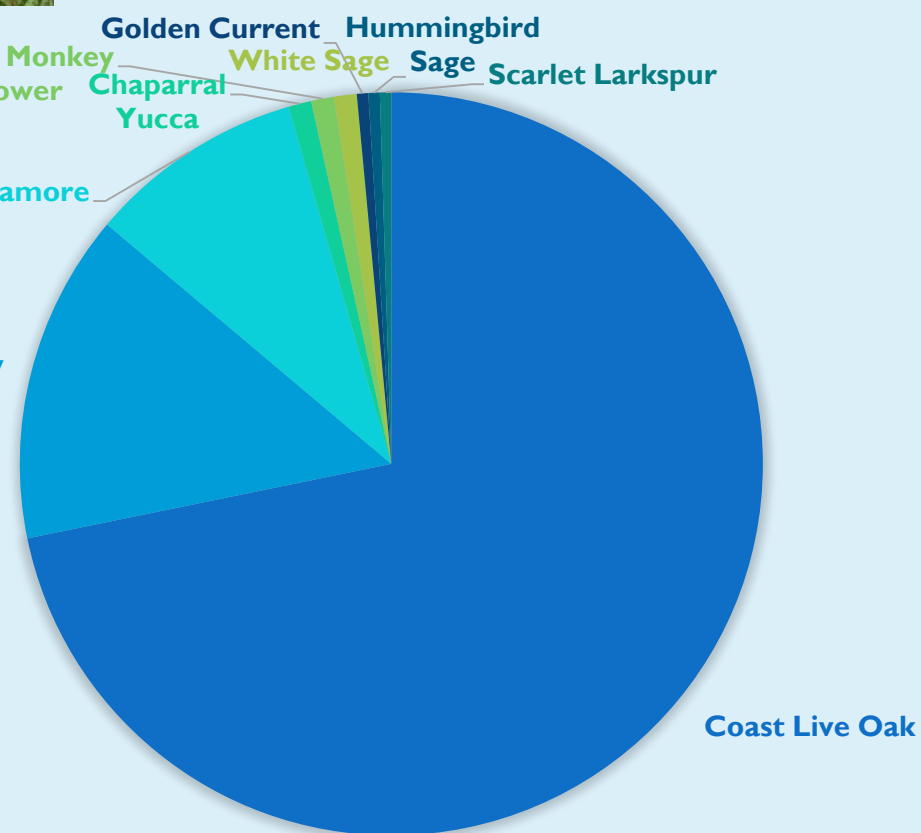


# 2

## GET TO KNOW YOUR (PLANT) COMMUNITY



- Source
  - Species
  - Diversity
    - (growth rate, phenology, function, etc.)
  - Care



# 2

## GET TO KNOW YOUR PLANT COMMUNITY (ON-SITE)



Photo by Johanna James-Hein





# DIVERSIFY VOLUNTEER PARTICIPATION



- Families
- Students and 'core volunteers'
  - Opportunities for learning
- Off-the-trail
- Planting/watering
- Site preparation
- Data collection
- Weeding



## SPREADING THE WORD

- Print (newsletters/newspapers)
- Social Media
- Radio?/tv?
- Known volunteers/organizations

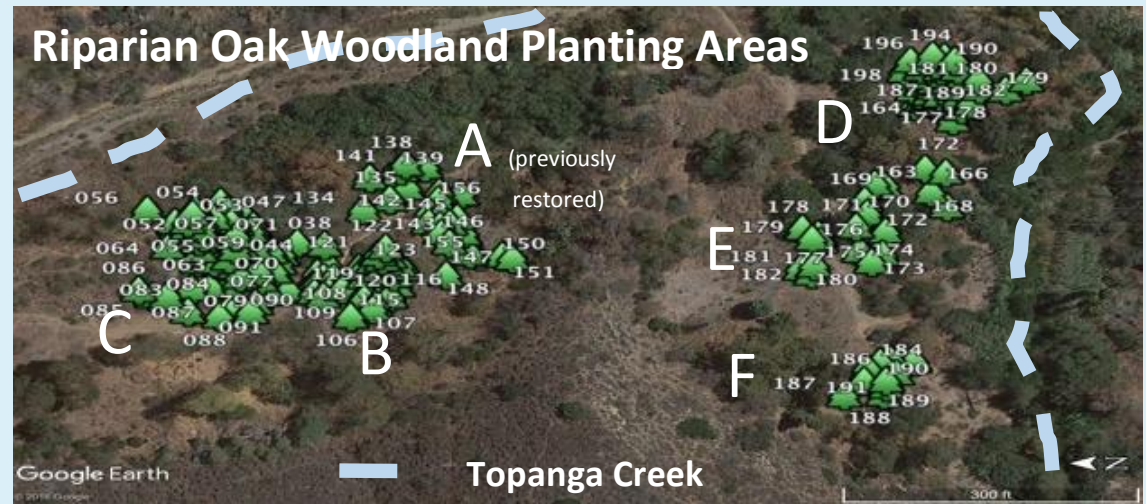




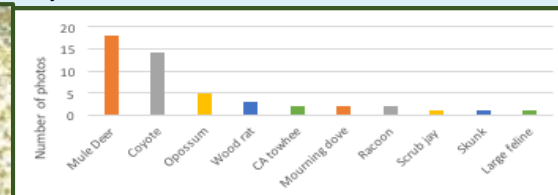


# DOCUMENT EVERYTHING

- Plant locations/ID
  - GPS, tags
- Have a wildlife camera
- Photos, notes
  - Collaborators
  - Number of volunteers



### The Wildlife Community





## THINK FORWARD

- Continue community involvement
- Plant/landscape management
- Maintain responsibility for the land?
- Next steps...





## SHARE YOUR EXPERIENCE

- Other advice?

**Lower Topanga Creek Riparian  
Oak Woodland Restoration**

- ↳ Engaging schools and communities in ecological restoration
- ↳ Reforesting wildlife habitat
- ↳ Supporting stream health

**RESOURCE**  
CONSERVATION DISTRICT  
OF THE  
SANTA MONICA MOUNTAINS  
[www.rcdmn.org](http://www.rcdmn.org)

Winter 2016-2017

*Made possible by the Earth Island Institute,  
supported by CA Coastal Conservancy, the  
Wildlife Conservation Board, and SCWRP*

THANK YOU

A decorative illustration of a branch with red and pink leaves and green berries, framing the text 'THANK YOU'. The leaves are in various shades of red and pink, with some having white vein patterns. The berries are small and green. The text 'THANK YOU' is written in a black, serif font, with 'THANK' on the top line and 'YOU' on the bottom line. The branch curves around the text, with leaves and berries interspersed between the words.