

The Little Forks Conservancy



Little Forks Conservancy

- Protecting land since 1996
- 501(c)3 nonprofit organization
- Accredited in 2010

Our mission:

The Little Forks Conservancy permanently protects and preserves natural lands that add to the quality of life in our mid-Michigan community.

Where to find your local conservancy?

- Heart of the Lakes Center of Land Conservation Policy
 - <http://www.heartofthelakes.org/>
- Land Trust Alliance
 - <http://www.landtrustalliance.org/>

Michigan Conservancies



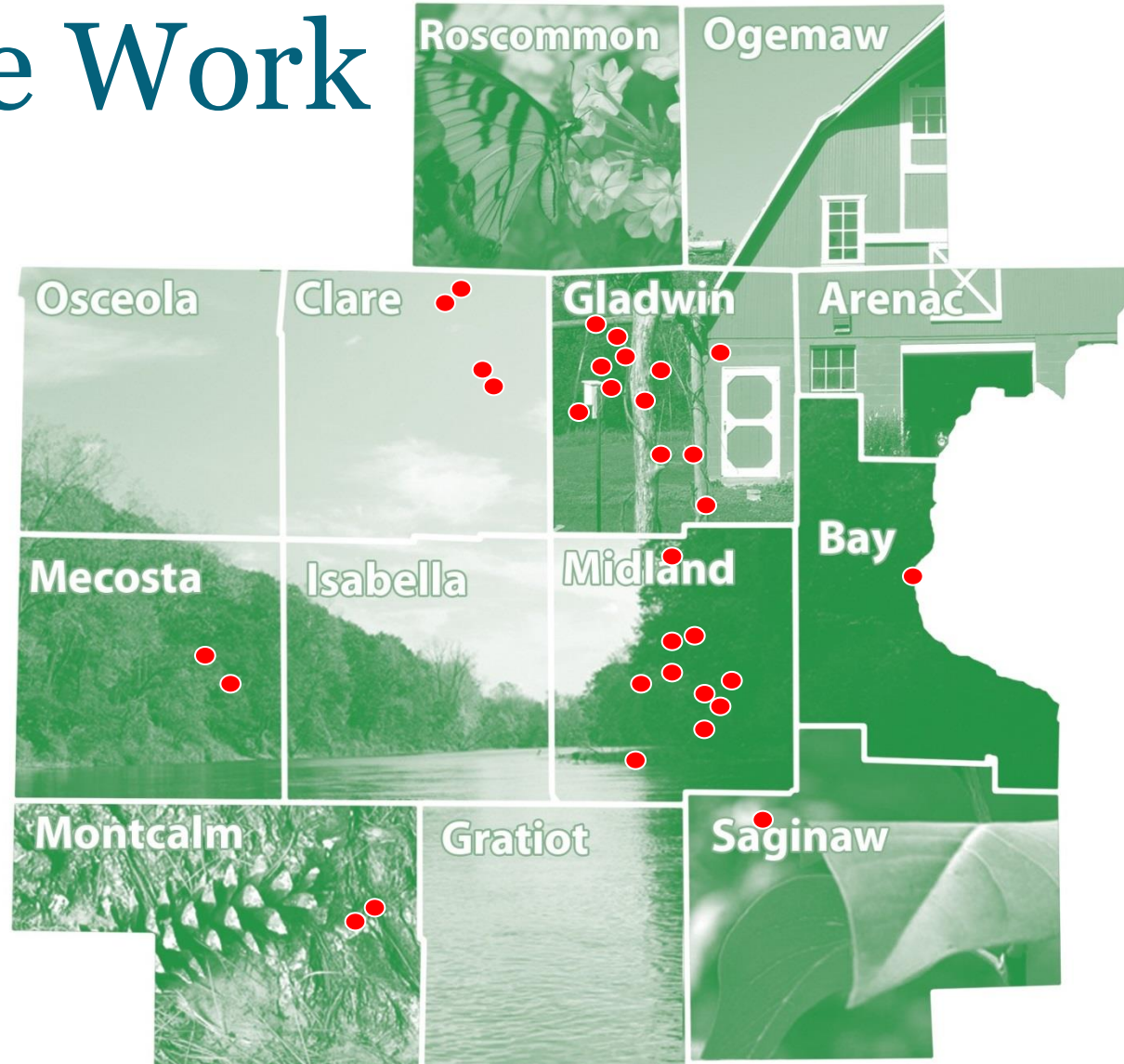
How does a Land Conservancy Work?

Land conservancies are suited better than any other organization to safeguard Michigan's natural beauty and the conservation values of our most important lands. To do this, land conservancies use the following suite of tools to protect and steward land forever:

- **Nature preserves or sanctuaries -**
- **Conservation easements** u
- **Government assists**
- **Stewardship**
- **Education**

Where We Work

● LFC
Conservation
Projects

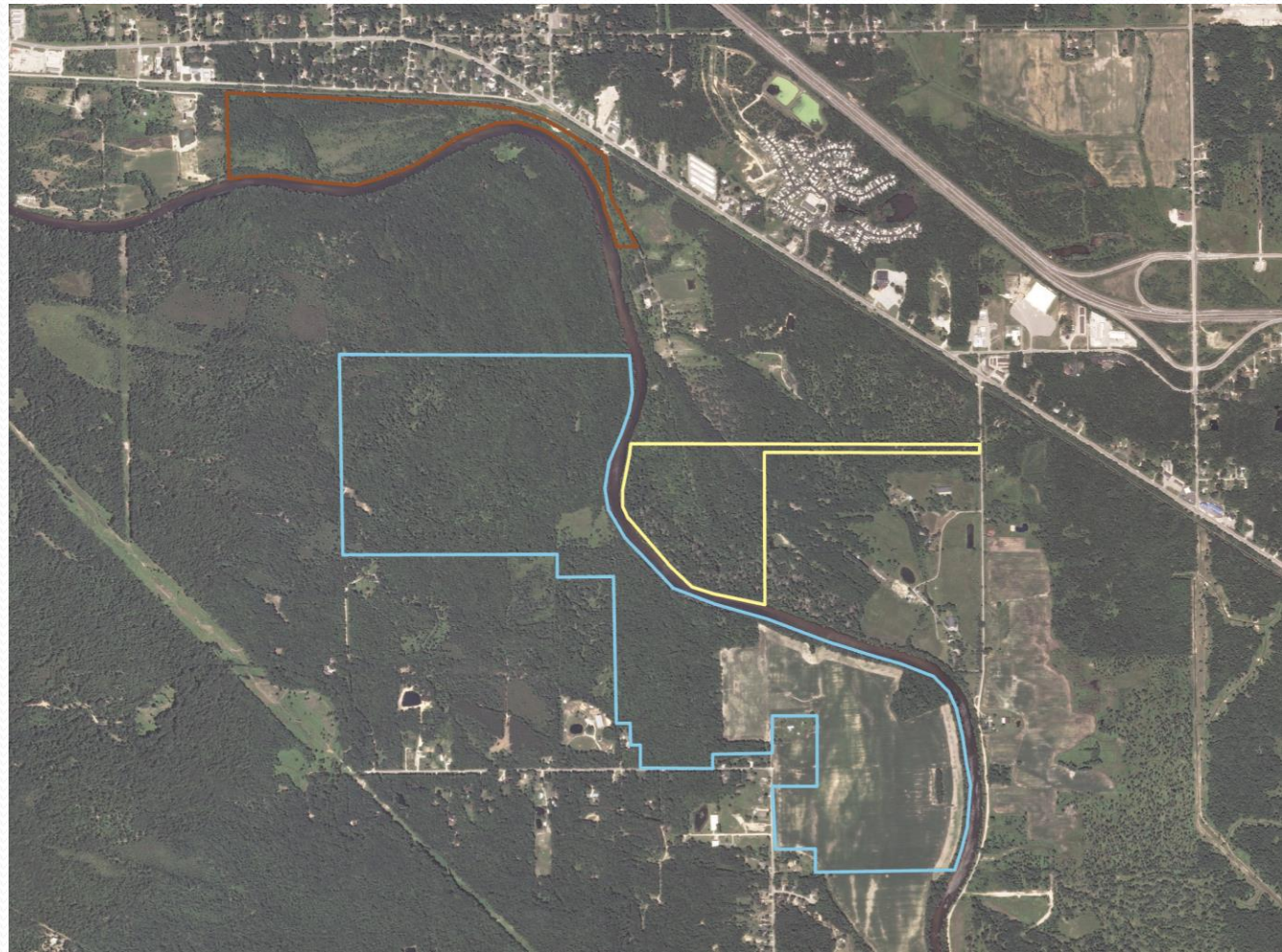


Our Nature Preserves

 Averill Preserve

 Riverview
Natural Area

 Forestview
Natural Area





Bailey Farm
Conservation Easement
72 acres • 2013



Conservation Easements

A legal agreement between a landowner and the Little Forks Conservancy protecting specified conservation values of the land.

This agreement is recorded at the county register of deeds and is effective in perpetuity.





Donald Blades
Conservation Easement
274 acres • 1999



A Walk Through the Process

- Arrange a site visit
- Determine goals and objectives
- Ensure property meets
Land Protection Criteria
- Draft conservation easement and
finalize agreement



A Walk Through the Process

- Title Search
- Land Committee Review
- Conservancy Board of Directors Review
- Baseline Document
- Sign and Record

Holding Up Our End

- Long-term relationship with the landowner
- Annual monitoring
- Ensure stable funding
- Resources and commitment to enforce the restrictions on the property



In Summary

- Conservation Easements are:
 - Voluntary
 - Landowner-driven
 - Tailored to your property
 - Our commitment to uphold your conservation goals

Questions?

Contact Information

Elan Lipschitz

105 Post Street

Midland, Michigan 48640

elipschitz@littleforks.org

www.littleforks.org