



Programs and People to Help Forest Landowners

26 September 2015

Mike Smalligan

Forest Stewardship Coordinator

Department of Natural Resources - Forest Resources Division



Assistance for Private Forest Landowners

- General Forestry Information
- Forest Management Plans
- Property Tax Incentives
- Financial Assistance
- Forest Certification
- Working Forest Easements
- Wildlife Habitat



General Forestry Information

- MSU Extension
 - 5+ staff around the state offer general forestry education
 - <http://msue.anr.msu.edu/topic/info/forestry>
- Forestry Assistance Program
 - 20 Conservation District foresters serving 49 counties
 - MDARD provides finding; DNR provides training
 - www.michigan.gov/mifap



Forest Management Plans

- Forest Stewardship Program
 - 130 foresters and wildlife biologists
 - Simple and comprehensive plan
 - \$225/plan plus \$0.50/acre up to \$2,500
 - www.michigan.gov/foreststewardship
- Conservation Activity Plans
 - 50 Technical Service Providers
 - Generous financial assistance
 - Longer application and contract process
 - Administered by local NRCS offices
 - www.nrcs.usda.gov/wps/portal/nrcs/main/mi/contact/local/



Property Tax Incentives

- Commercial Forest Program
 - Flat rate of \$1.25 per acre
 - PUBLIC ACCESS for hunting and fishing
 - 2.2 million acres
 - www.michigan.gov/commercialforest
- Qualified Forest Program
 - Avoid 18 mills of local millage taxes (2 mill annual fee)
 - NO PUBLIC ACCESS
 - 350,000 acres
 - www.michigan.gov/qfp



Financial Assistance

- Environmental Quality Incentives Program (EQIP)
 - Financial Assistance for “producers”
 - “Resource Concerns”
 - water quality, soil erosion, plant productivity
 - “Conservation Practices”
 - stream crossing, roads, forest stand improvement, tree planting
 - “Technical Service Providers” (TSP)
 - Provide technical assistance to landowners
- Conservation Stewardship Program (CSP)
 - Resource concerns are already fixed
 - Five year payments to enhance the resources
- www.nrcs.usda.gov



Forest Certification

- American Tree Farm System
 - 10 to 10,000 acres
 - 8 Standards of Sustainability
 - Very low cost
 - www.treefarmssystem.org
- Forest Stewardship Council
 - Family Forest standard
 - Group Certificate in Western UP
 - www.sustainableforestresource.com



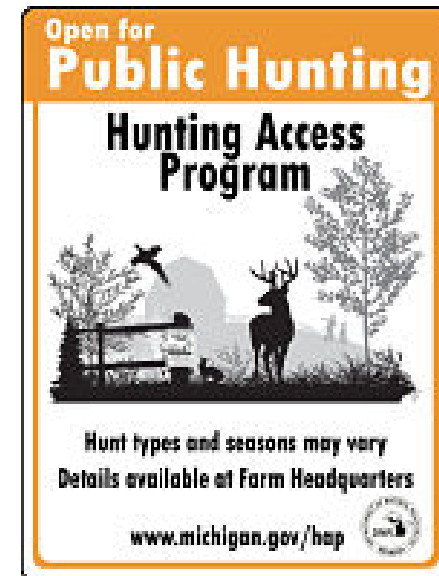
Working Forest Easements

- Healthy Forests Reserve Program
 - Administered by NRCS
 - Limited to a watershed along the Indiana border
 - www.nrcs.usda.gov
- Forest Legacy Program
 - Easements or purchases of important private forest land
 - Administered by DNR, funded by USFS
 - www.michigan.gov/privateforestland



Wildlife Habitat

- US Fish and Wildlife Service
 - Partners for Fish and Wildlife
 - Wetlands, grasslands, cold streams, young forest
 - www.fws.gov/midwest/partners/getinvolved.html
- DNR Wildlife Division
 - Landowner Incentive Program
 - Grasslands, deer, turkey, etc
 - www.michigan.gov/dnr/lip
 - Hunter Access Program
 - Payments to landowners for controlled public hunting access
 - www.michigan.gov/hap
- Private Organizations
 - Trout Unlimited
 - Michigan United Conservation Clubs
 - Ruffed Grouse Society
 - Ducks Unlimited



Michigan's Professional Foresters

- Consulting Foresters (~150)
 - Work directly for the landowner
- Industry Foresters (~75)
 - Work for local forest products companies
- Government Foresters (~35)
 - Conservation Districts
 - MSU Extension
 - DNR (another ~150 working on state land)
 - USFS (another ~50 working on federal land)
 - MDARD, NRCS, BIA





Thank you!

Mike Smalligan

Forest Stewardship Coordinator

www.michigan.gov/foreststewardship

smalliganm@michigan.gov or (517) 284 - 5884

Department of Natural Resources - Forest Resources Division

Public – Private Partnerships

- United States Forest Service – State and Private Forestry
- Natural Resources Conservation Service
- DNR, MDARD, DEQ (Quality of Life agencies)
- Conservation Districts
- MTU, MSU, MSUE
- American Tree Farm System
- Sustainable Forestry Initiative
- Michigan Forest Association
- Michigan Association of Consulting Foresters
- Michigan Society of American Foresters
- Michigan Association of Timbermen
- Michigan Forest Products Council
- Great Lakes Timber Professionals Association
- Project Learning Tree
- The Nature Conservancy, Huron Pines, The Stewardship Network, ...
- Trout Unlimited, Quality Deer Management Association, Ruffed Grouse Society, Michigan United Conservation Clubs, ...
- Many others

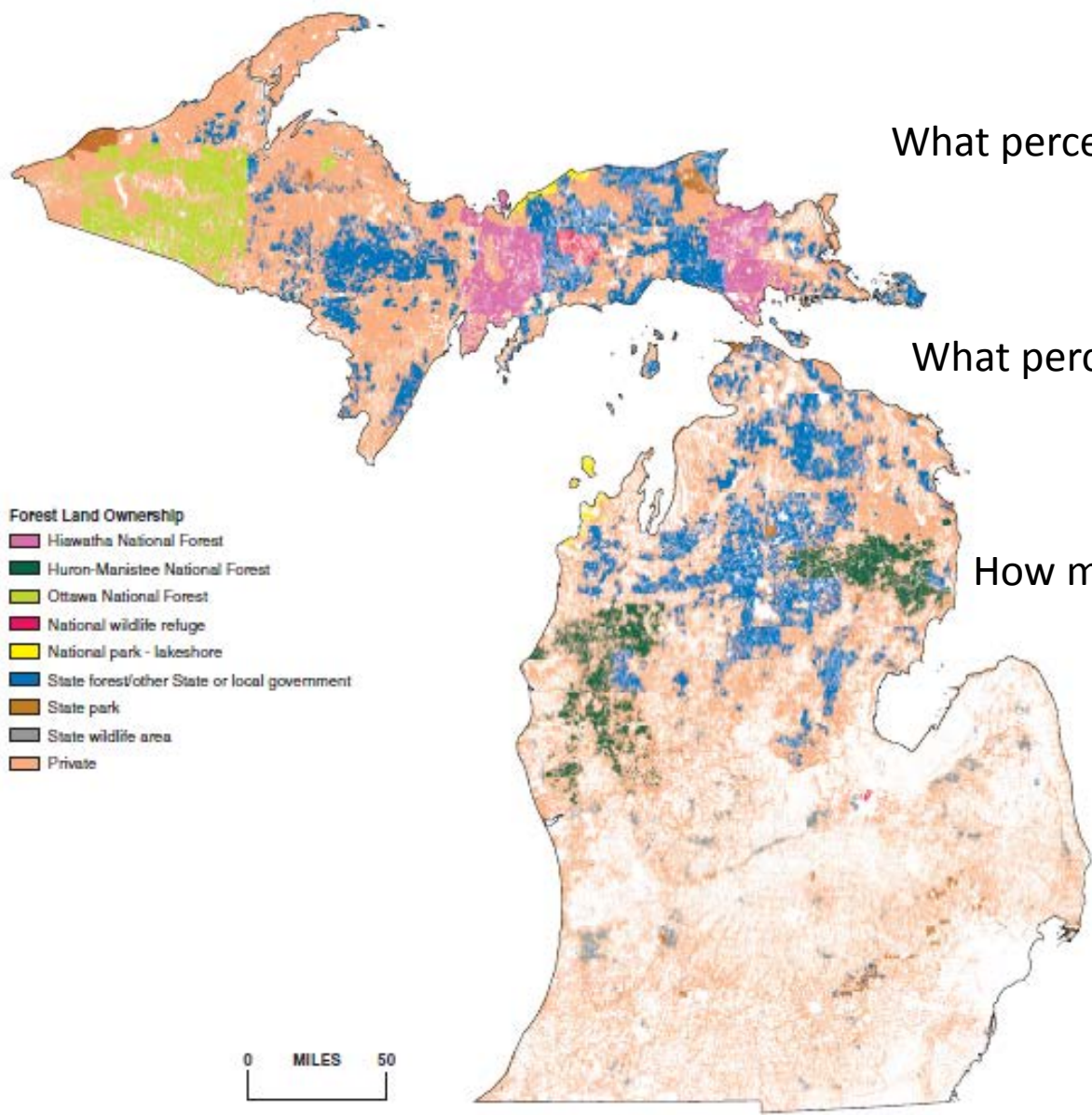


DNR and Private Forest Land

- Many of the DNR's daily activities directly benefit private forest land.
 - Forest Health
 - Monitoring across all forest ownerships; annual "Forest Health Report"
 - Fire Protection
 - 70% of wildfires that DNR fire officers respond to occur on private land
 - Forest Management
 - Knowledge sharing at meetings (SAF, CD, etc)
 - Training
 - Training for foresters and Qualified Logging Professionals
 - Landowner Interactions
 - Office visits, phone calls, chat in the field, off duty



Michigan Forestry Quiz



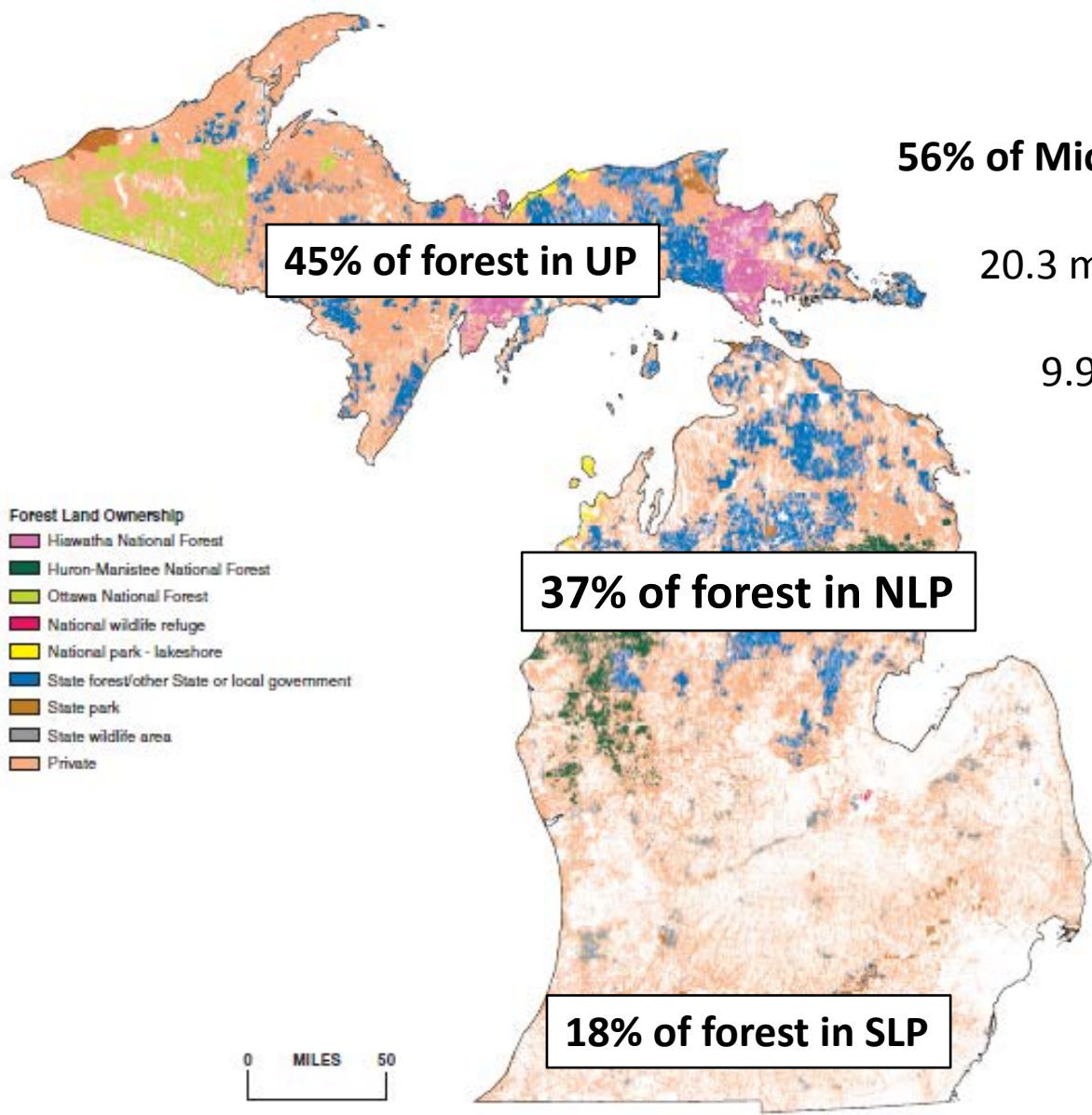
What percent of Michigan's land area is forest?

What percent of the forest is privately owned?

How many foresters are there in Michigan?

Figure 3.—Forest land ownership, Michigan, circa 2009 (see Map Descriptions and Acknowledgments in Statistics, Methods, and Quality Assurance).

Michigan's Forest Area



56% of Michigan's land area is forest land

20.3 million acres of forest land

9.9 million acres of farm land

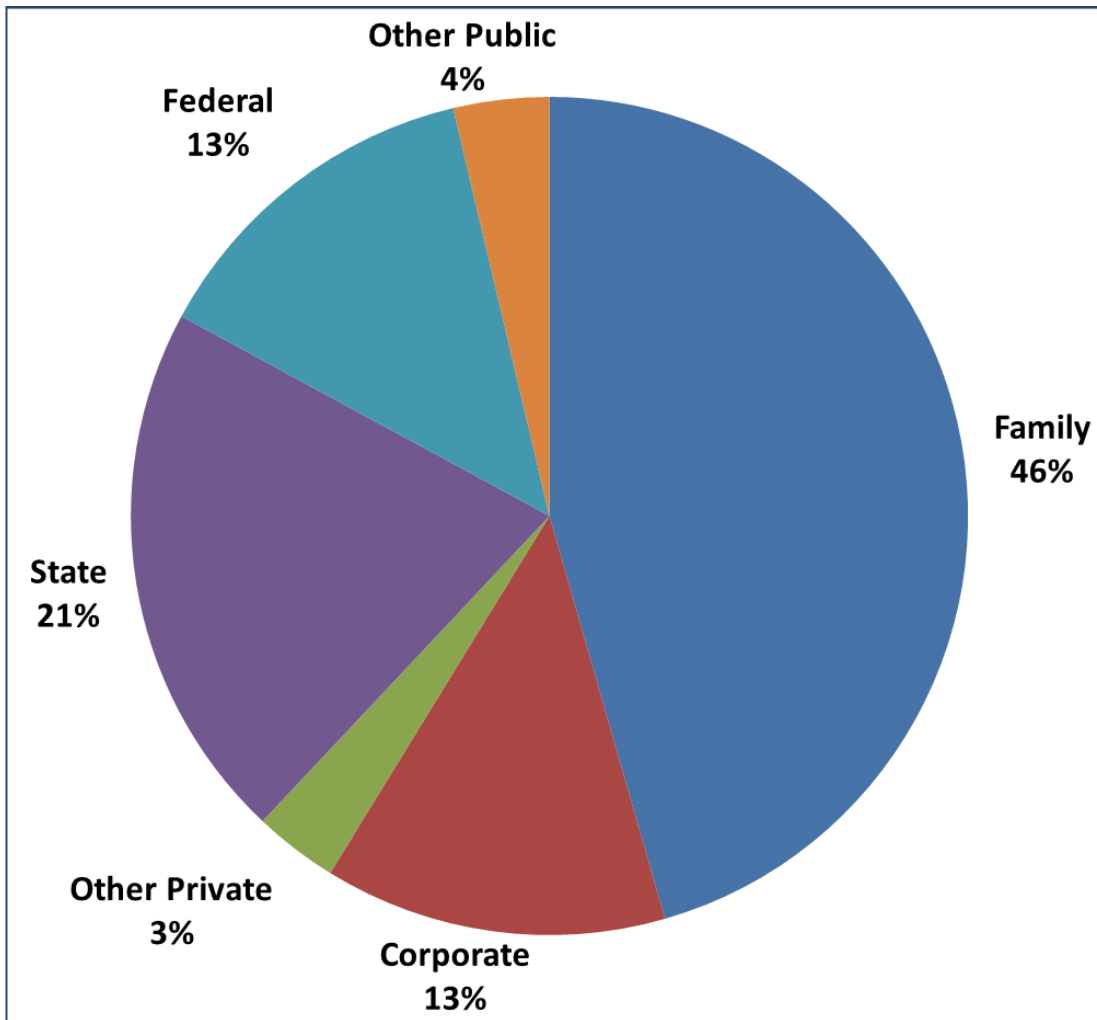
2.5 million acres of urban land

75% of people in urban areas

Figure 3.—Forest land ownership, Michigan, circa 2009 (see Map Descriptions and Acknowledgments in Statistics, Methods, and Quality Assurance).

Data Source: USFS Forest Inventory Analysis 2013
Map Source: Michigan's Forests 2009, NRS-66, USFS

Michigan's Forest Owners



62% is Private

38% is Public

400,000 Family Owners

Average size is 23 acres

Landowner type, percent of forest land.