

Rearing Parasitoids of the Emerald Ash Borer

Ben Slager

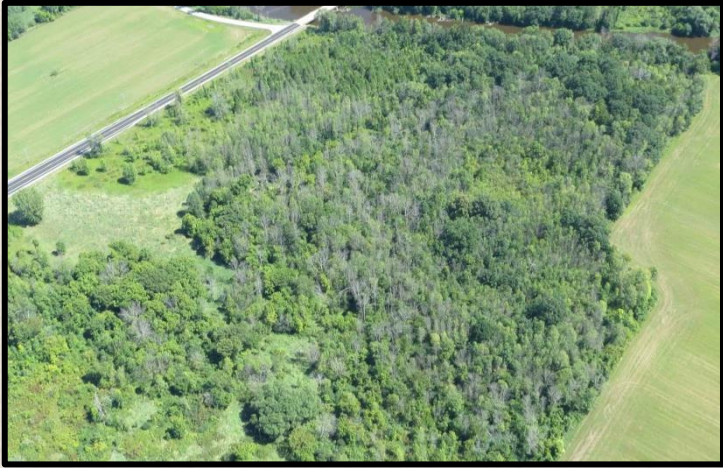
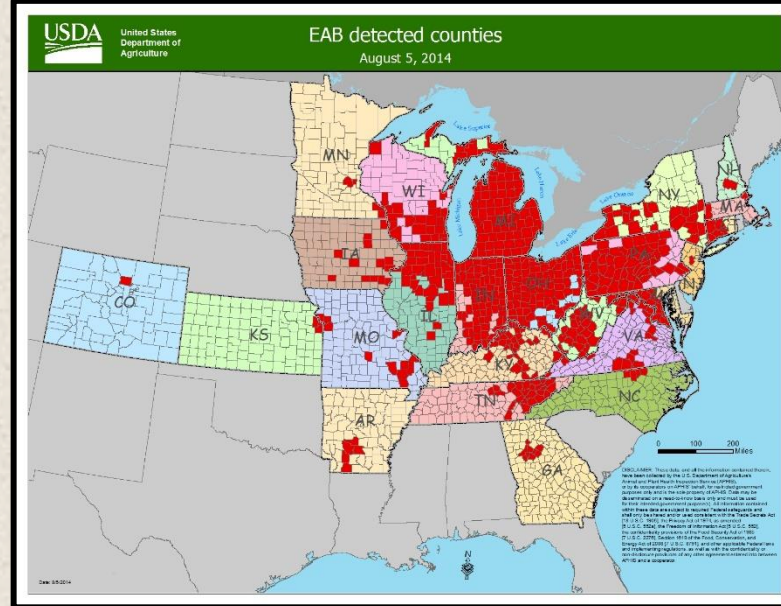
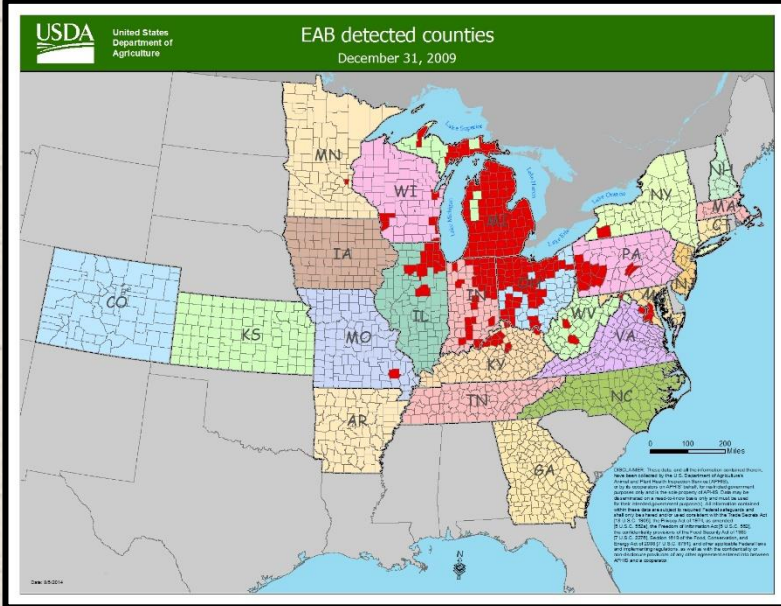
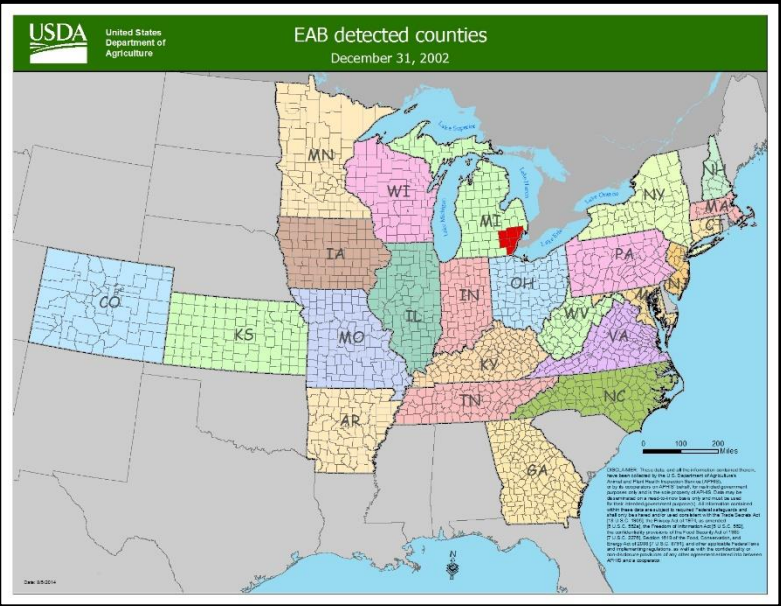
Supervisory Entomologist

EAB Biocontrol Facility

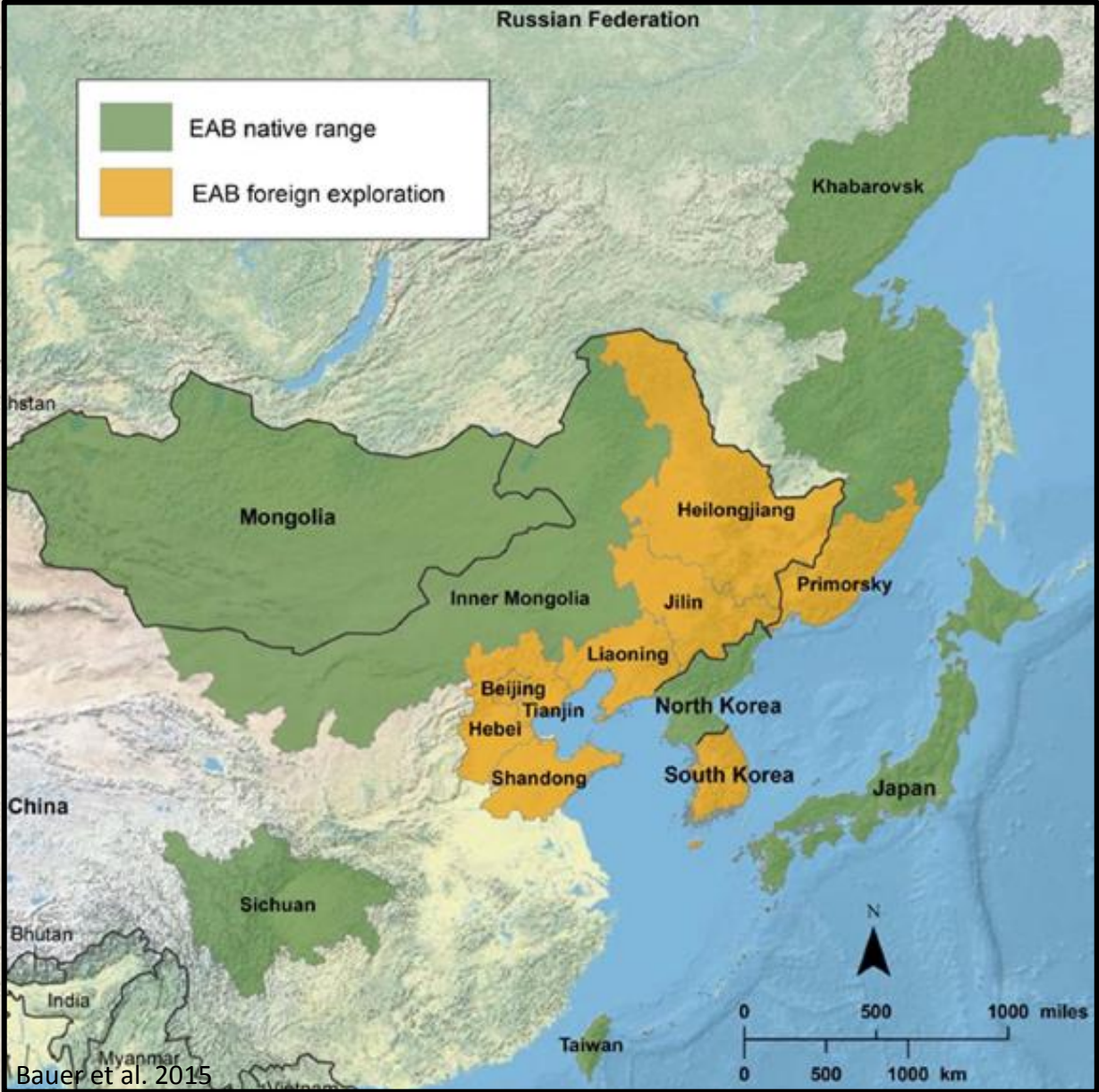
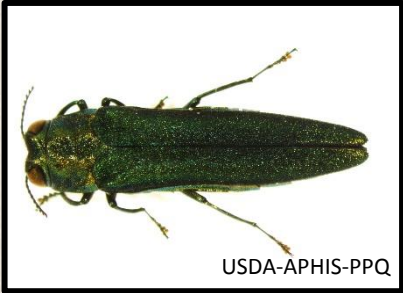
USDA-APHIS-PPQ



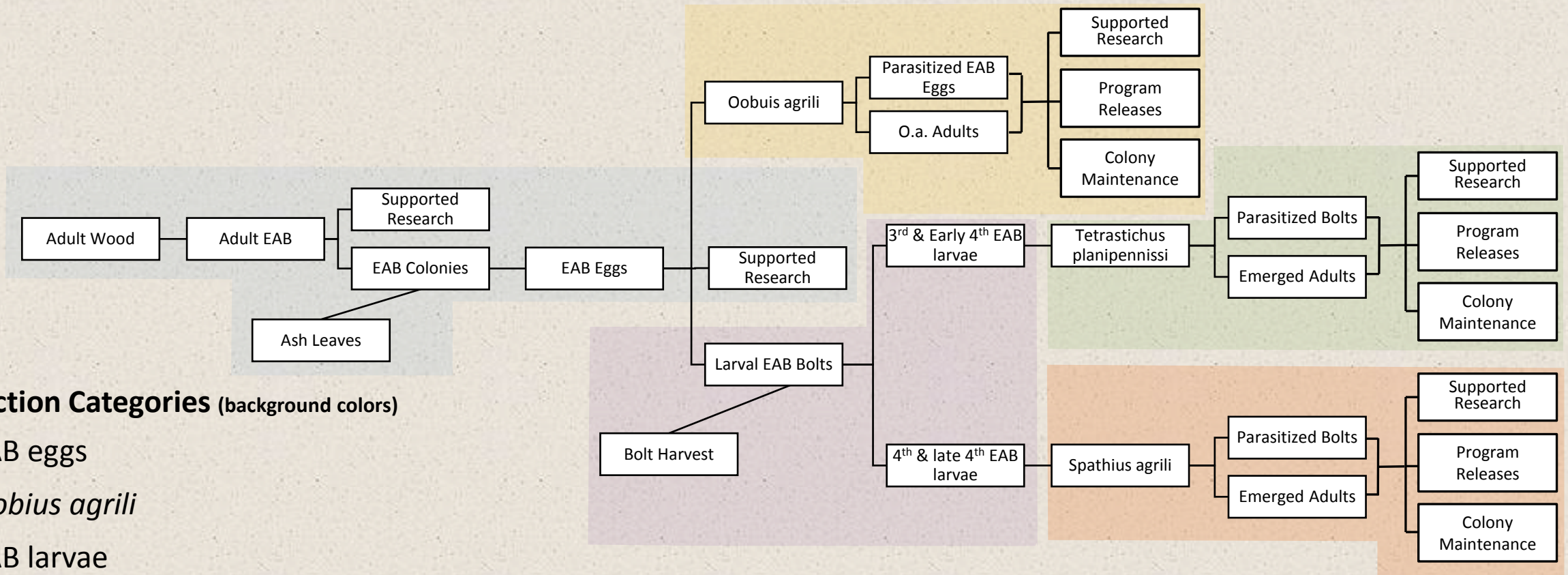
EAB Invasion



Biocontrol Agents



EAB Parasitoid Rearing System



Production Categories (background colors)

- EAB eggs
- Oobius agrili*
- EAB larvae
- Tetrastichus planipennisi*
- Spathius agrili*

Rearing EAB Eggs



Rearing EAB Eggs



Rearing EAB Eggs



USDA-APHIS-PPQ



USDA-APHIS-PPQ



USDA-APHIS-PPQ

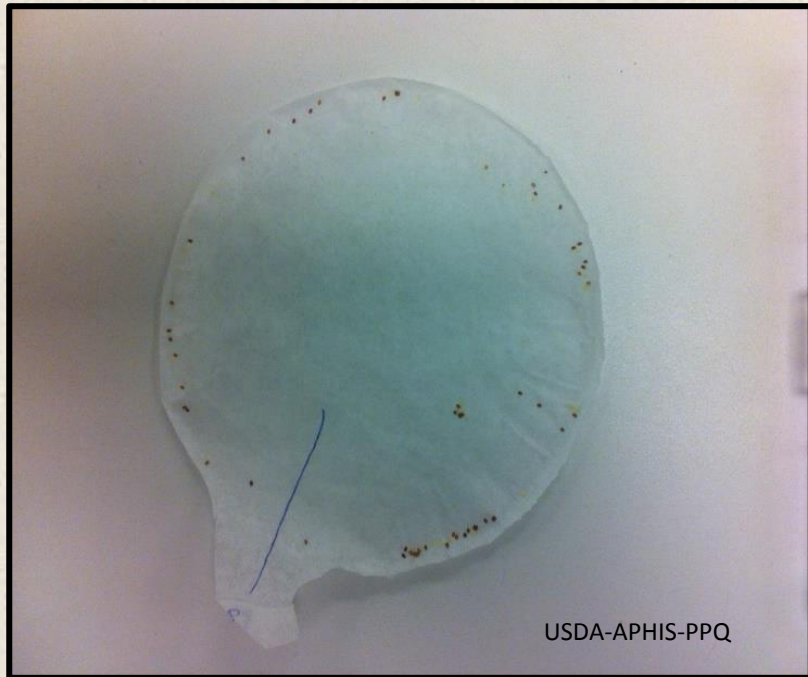


USDA-APHIS-PPQ

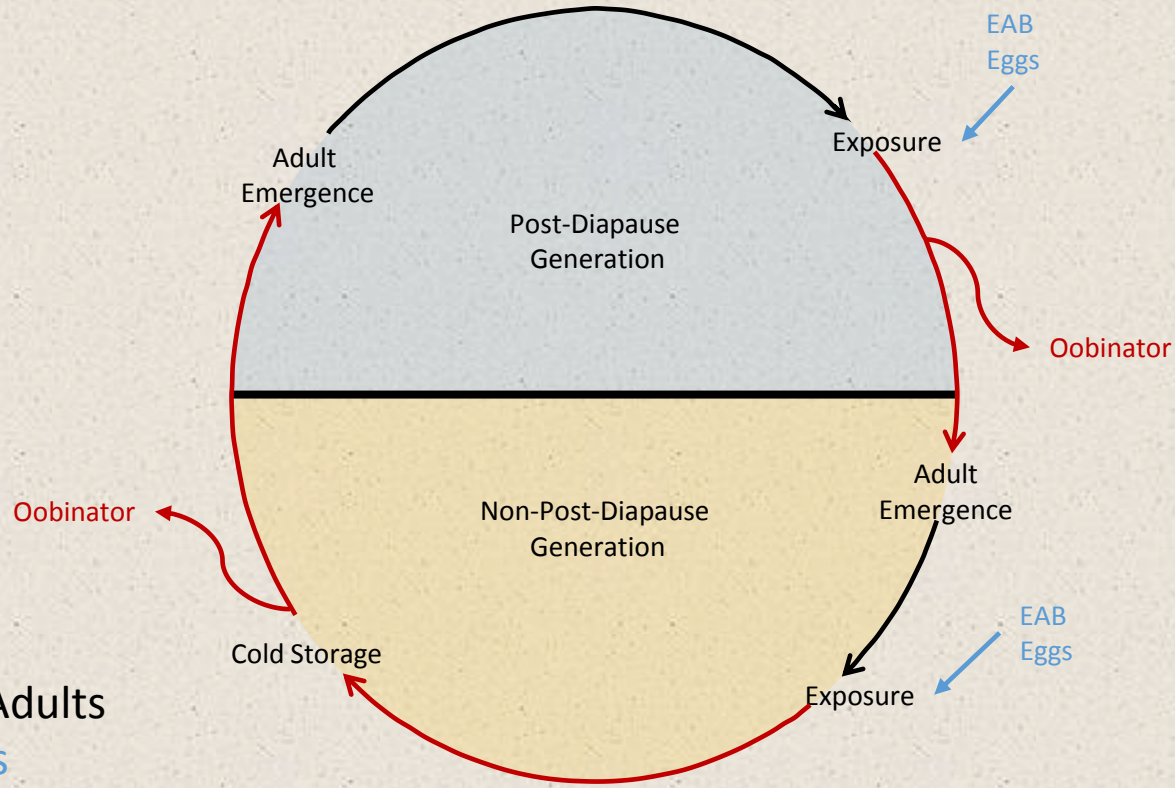


USDA-APHIS-PPQ

Destinations for Eggs



Rearing *Oobius agrili*



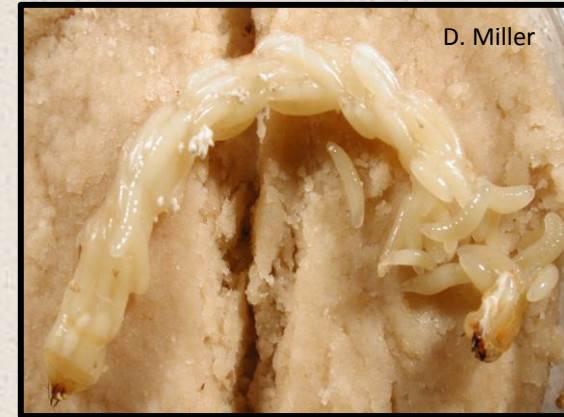
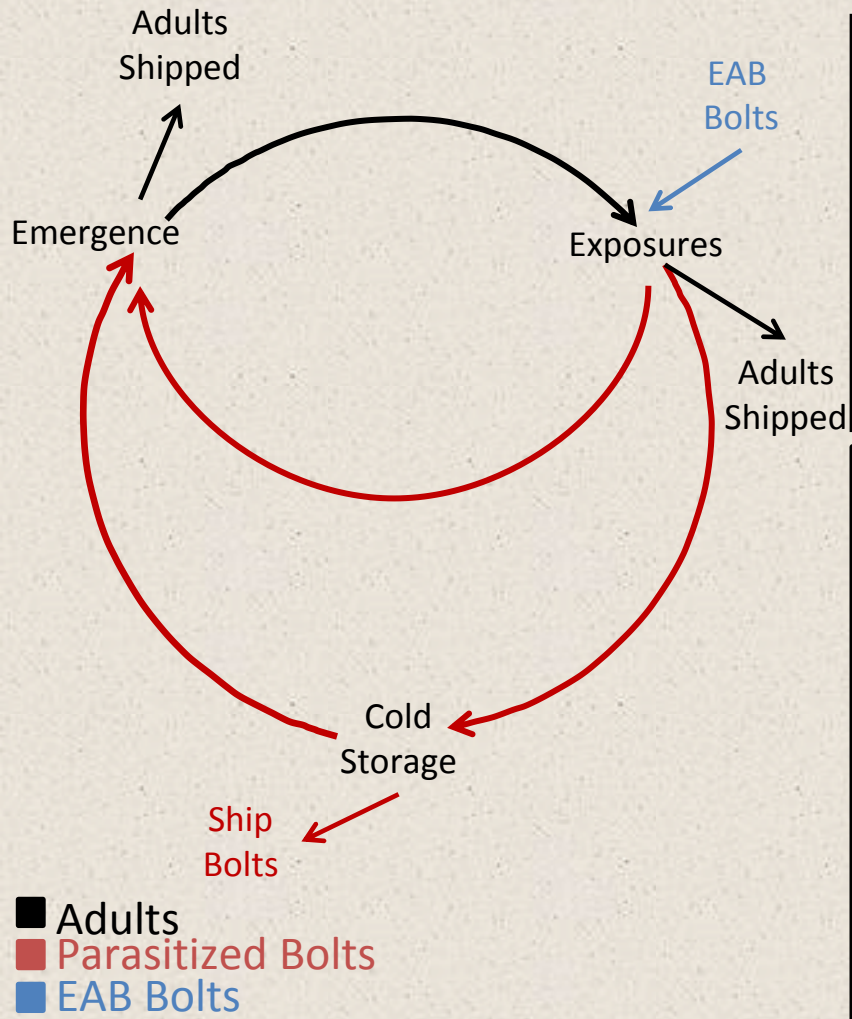
- Oobius Adults**
- EAB Eggs**
- Parasitized EAB Eggs**



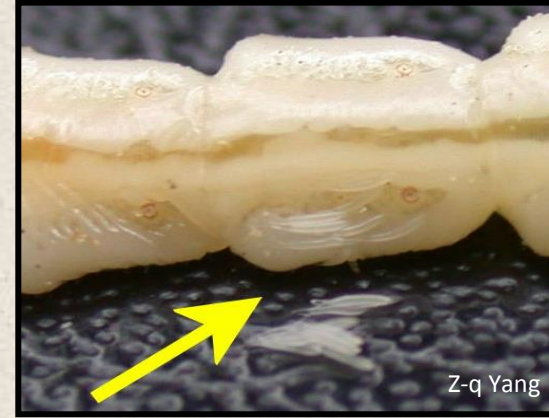
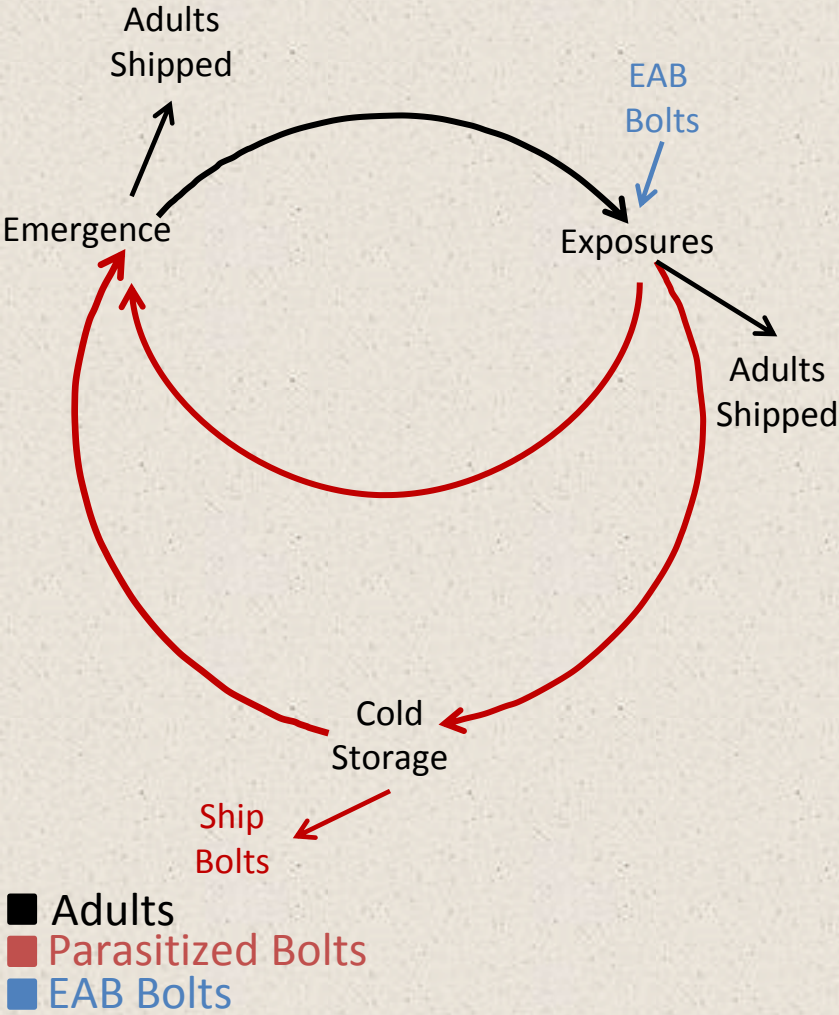
Rearing EAB Larvae



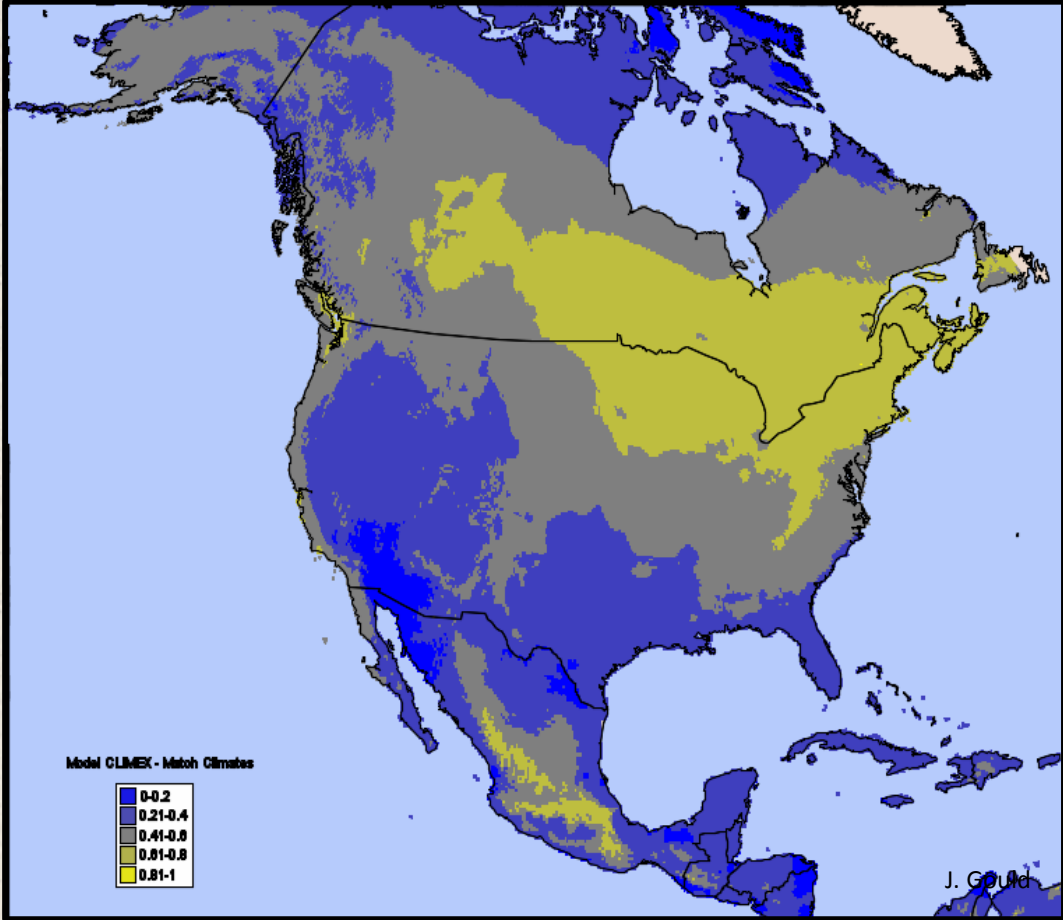
Rearing *Tetrastichus planipennis*



Rearing *Spathius agrili*

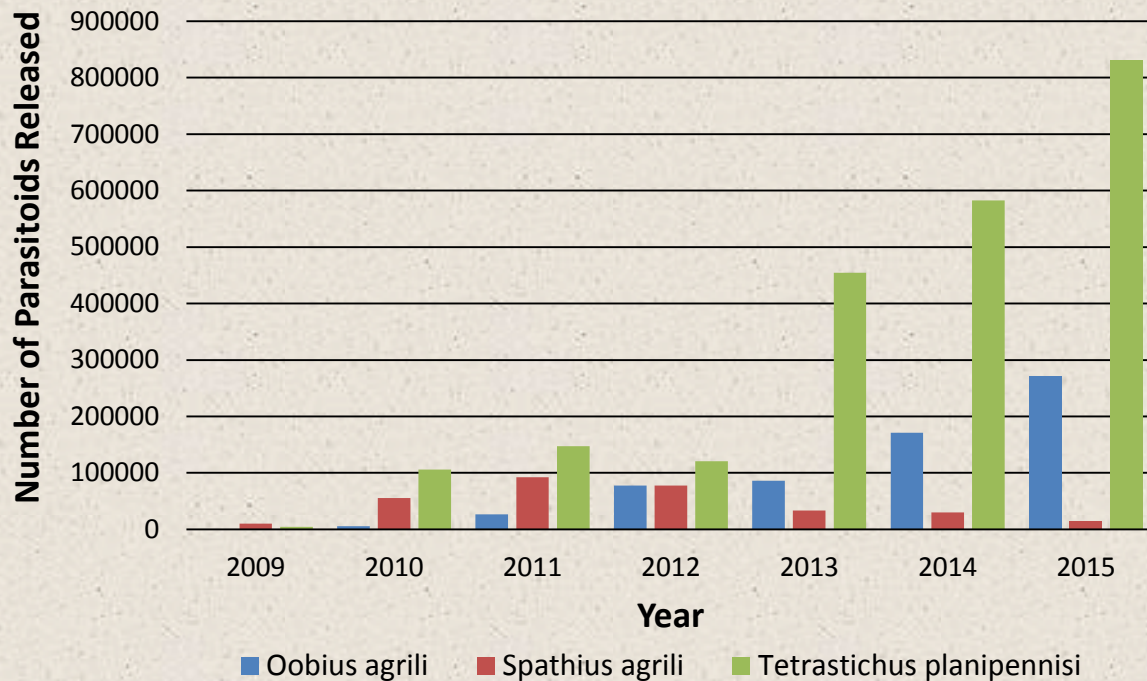


Rearing *Spathius galinae*

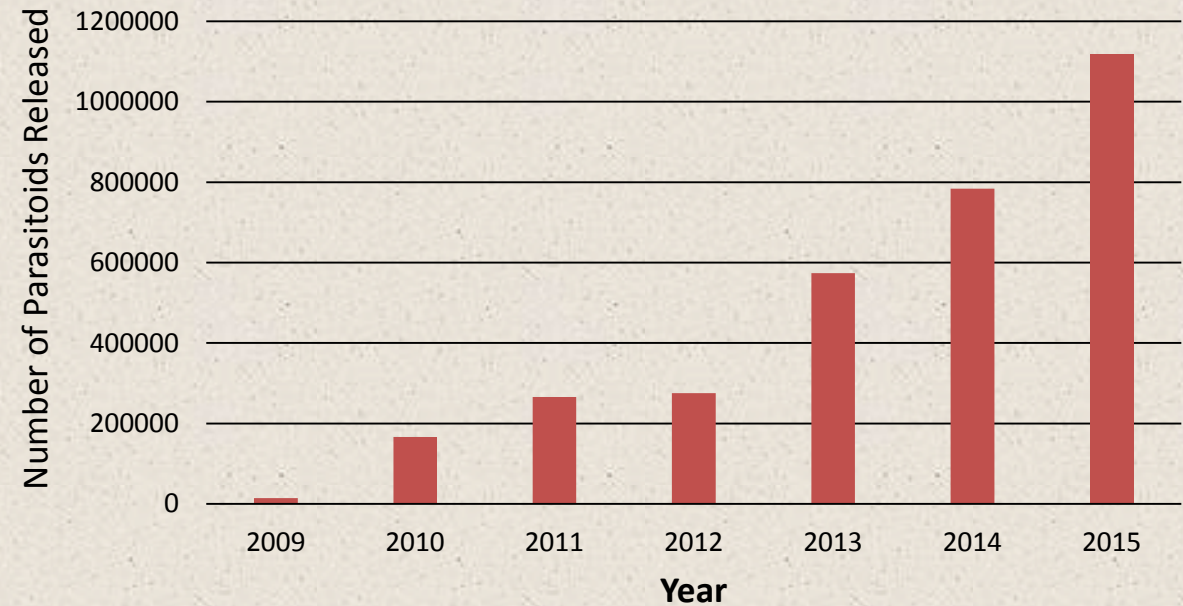


How many have been released?

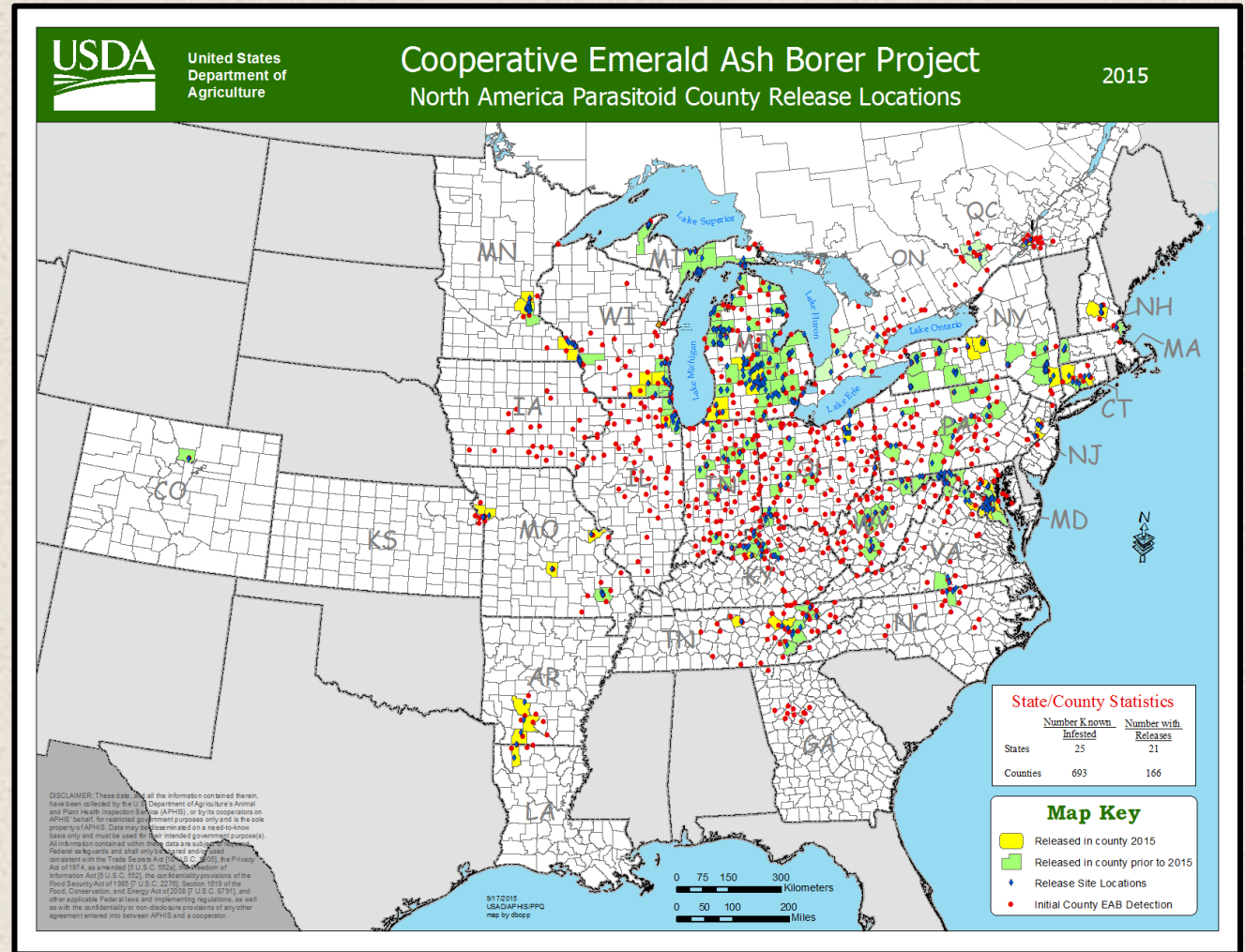
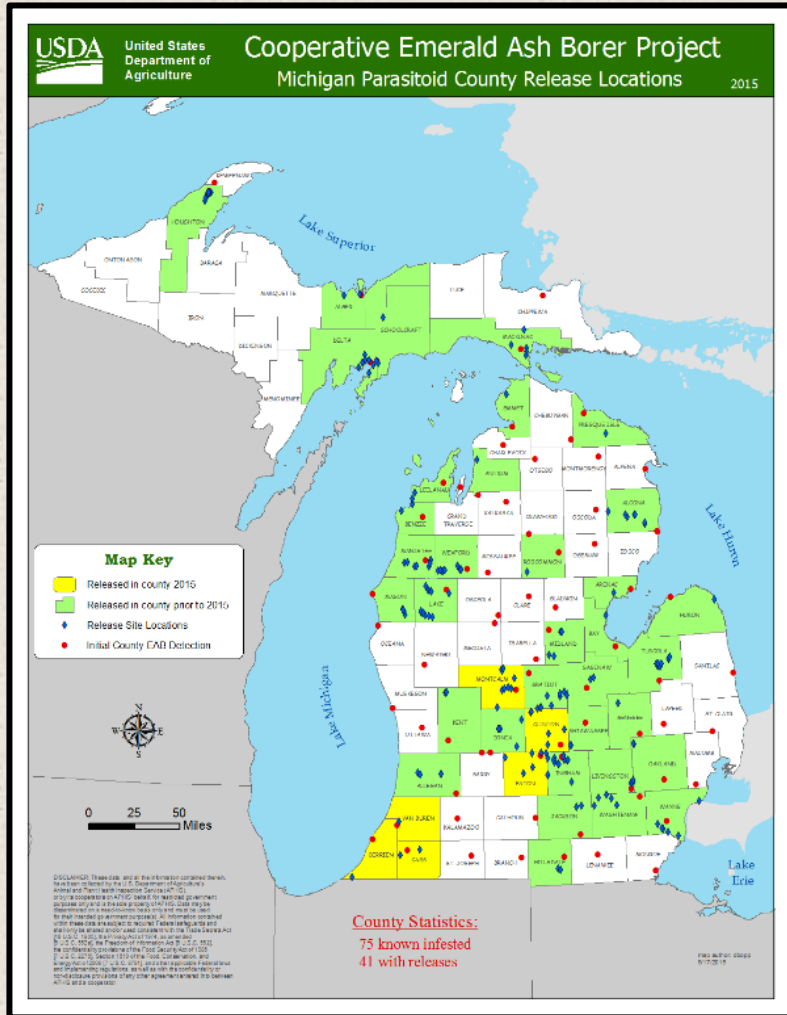
Parasitoids Released by Species (as of 11 Sept. 2015)



Total Parasitoids Released (as of 11 Sept. 2015)



Where have releases occurred?



You can help!



Pick up a flyer before you leave