



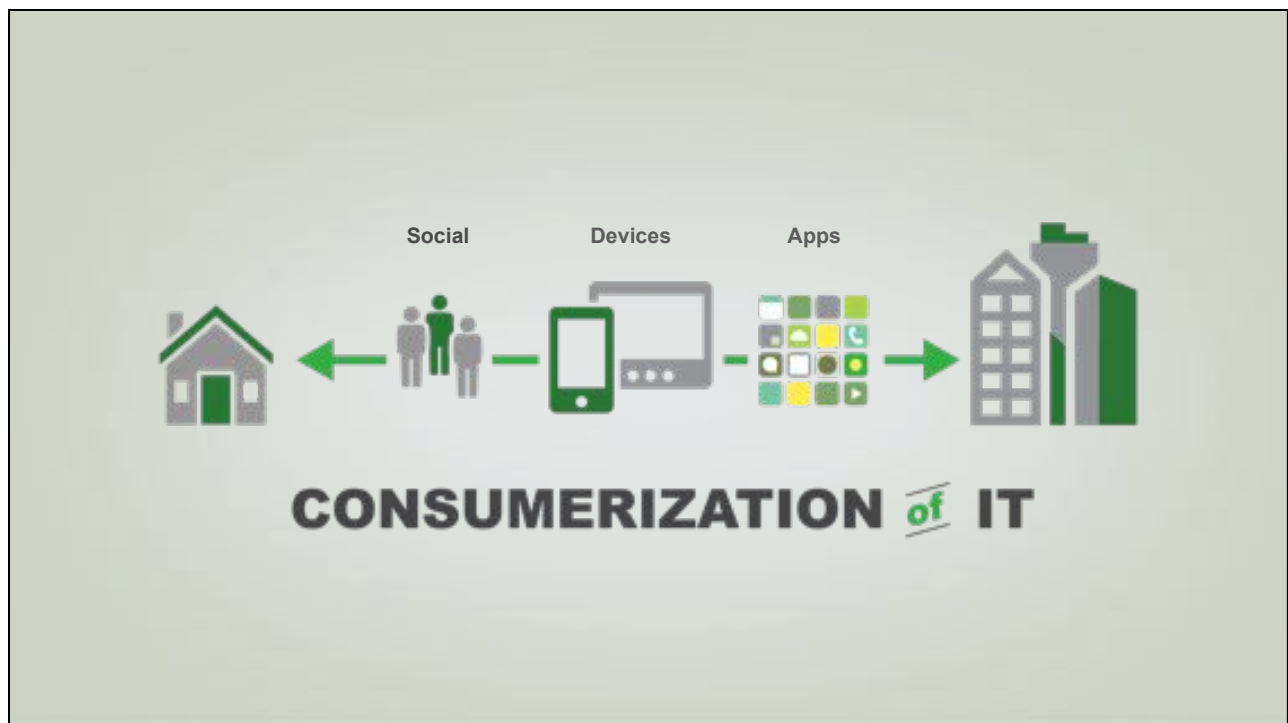
Esri and Forestry

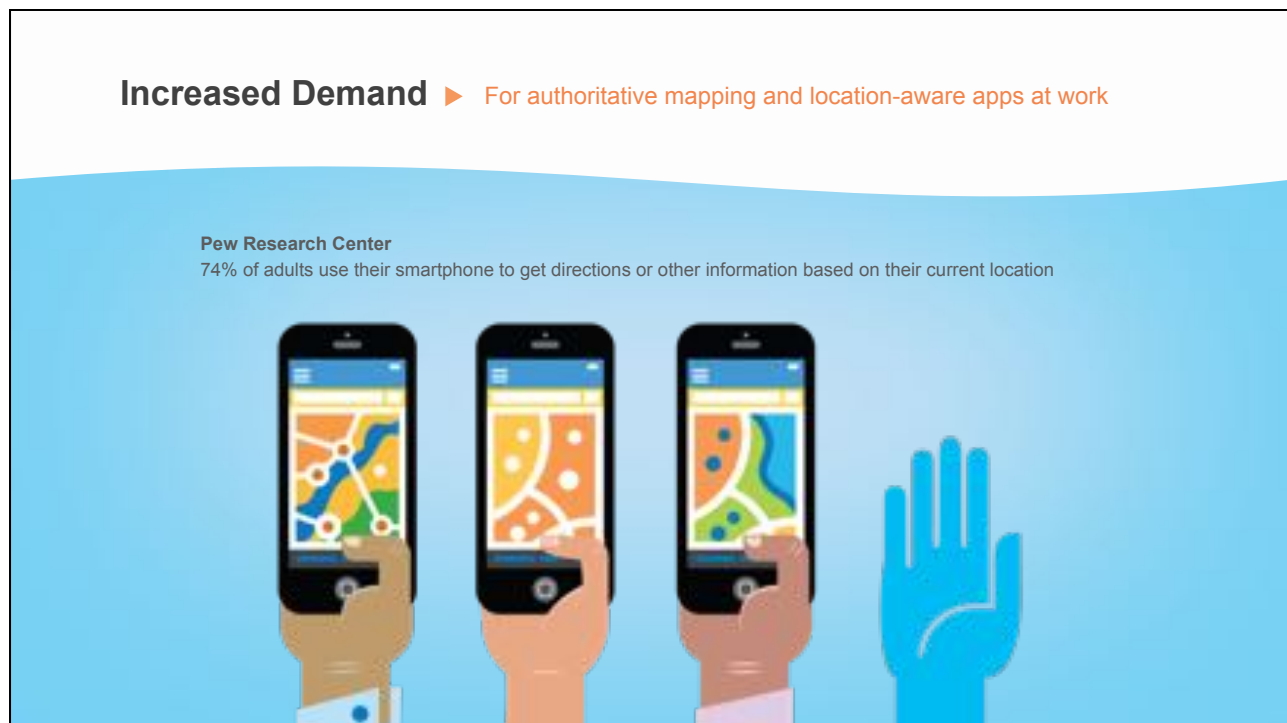
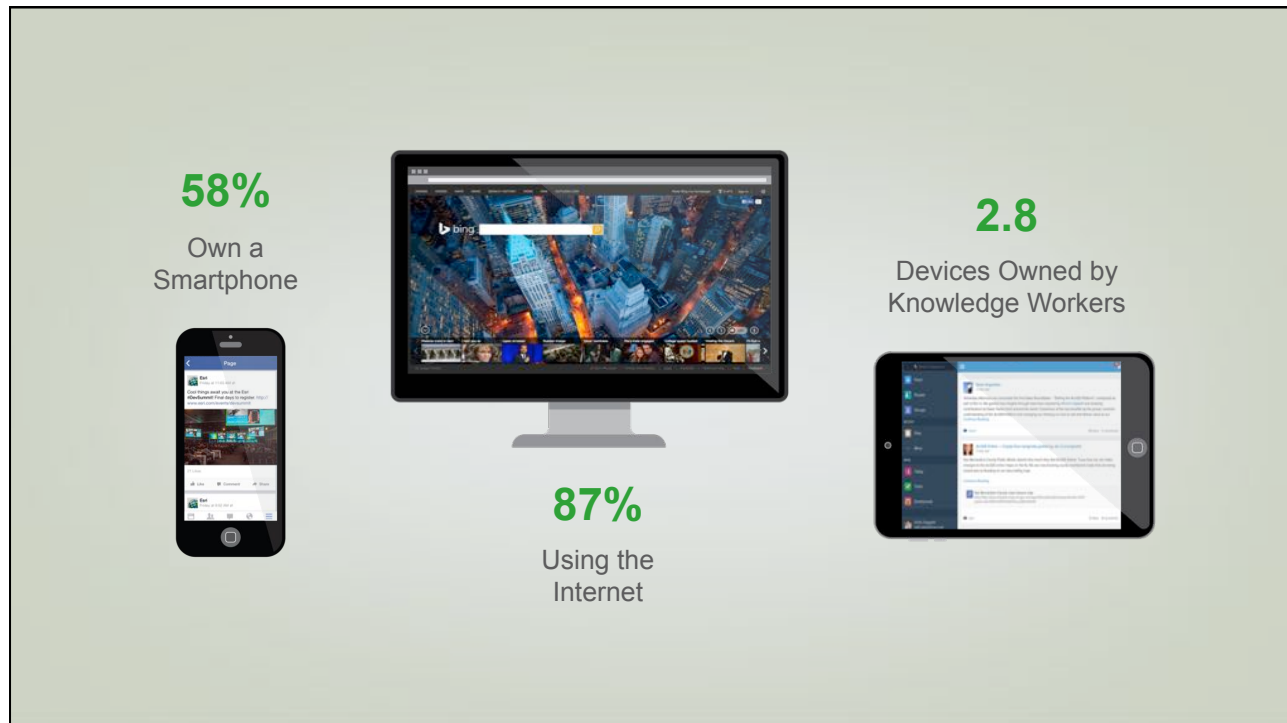
Founded on forestry, Esri has dedicated over 40 years to the global forest products industry.



Esri: Working with the Forestry Community

Esri's top 100 customers manage over one billion acres of timberland.



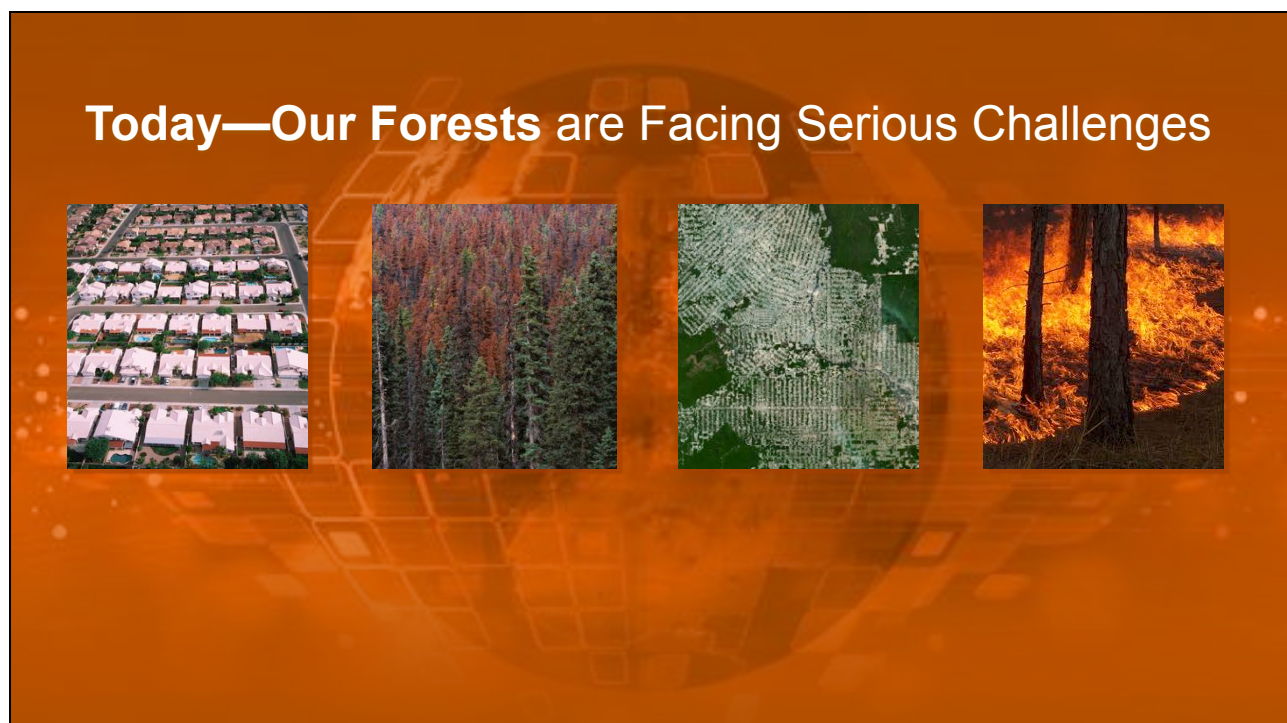
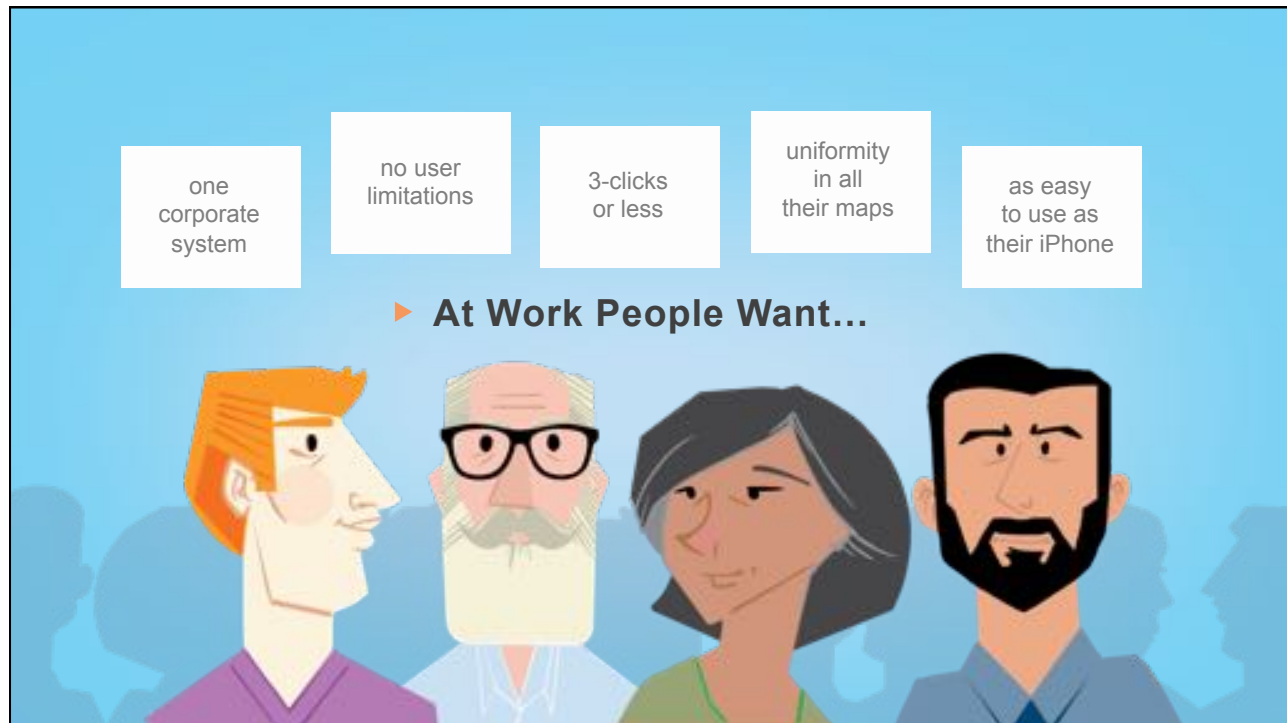


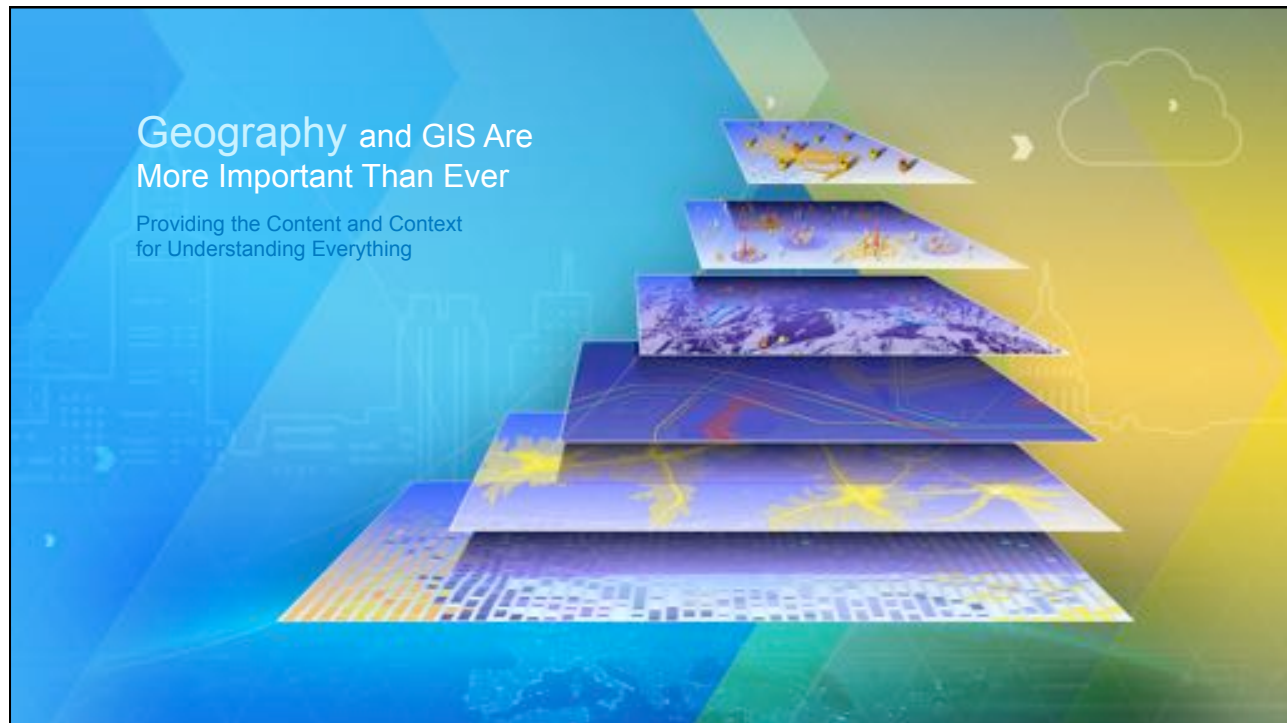


More than Just Maps | ArcGIS is an Enterprise Business Platform...
... Faster and Better Decision Making



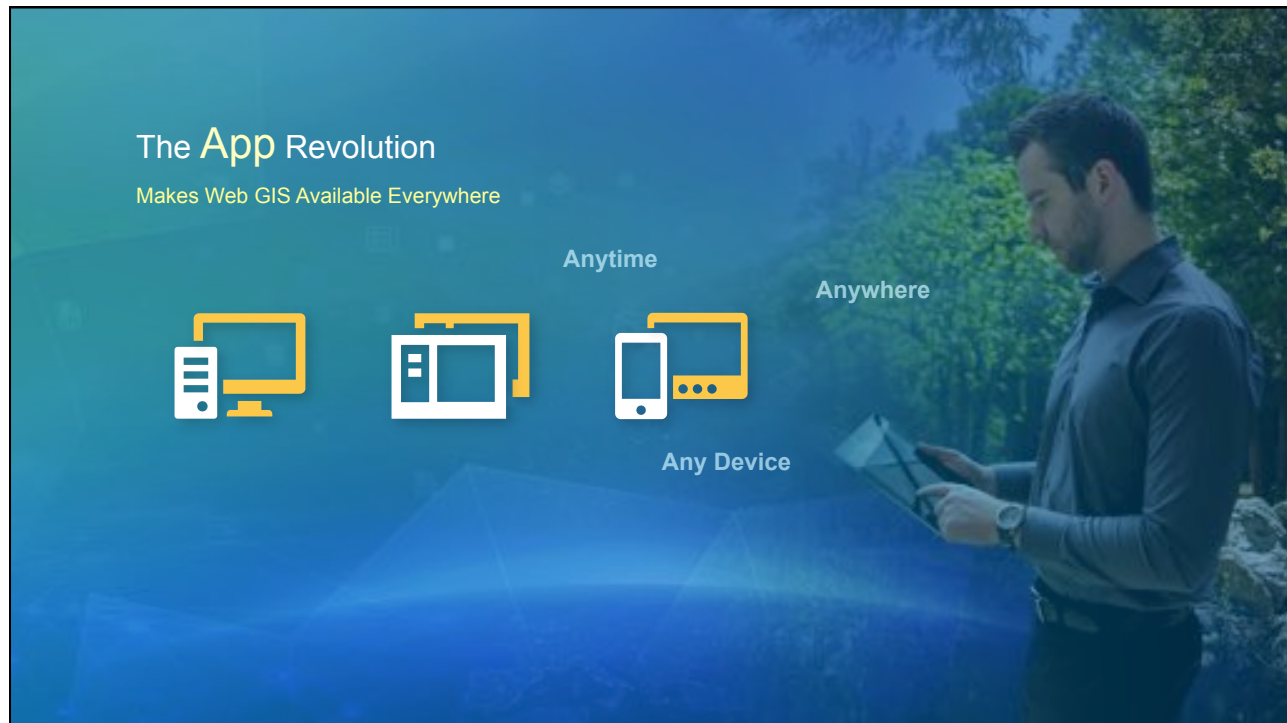
Is your **authoritative knowledge** reaching the entire workforce?









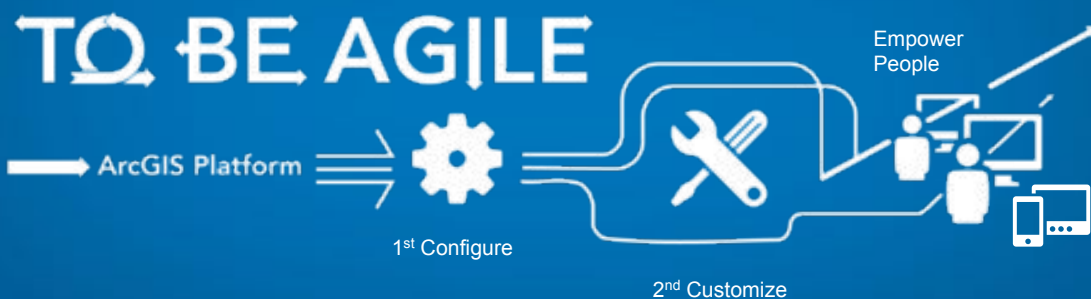


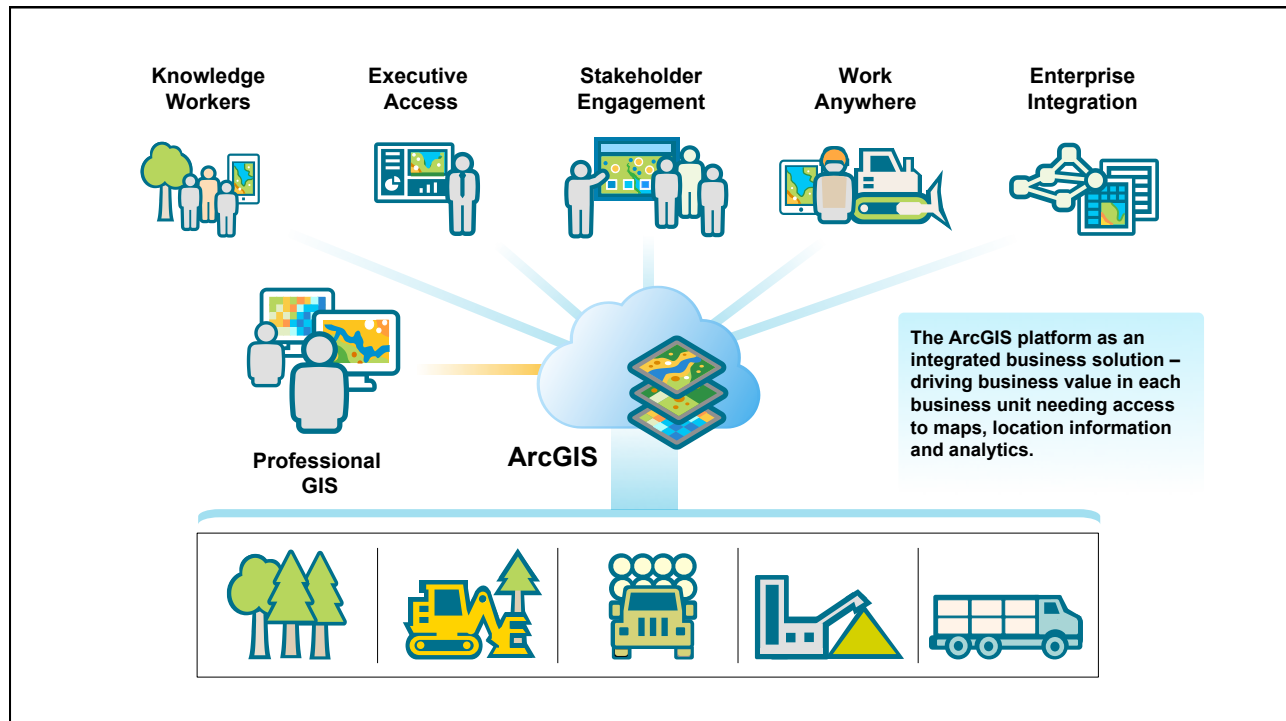
"None of our GIS staff helped stand up Collector. I've had to learn on my own. Nowhere in my background do the letters 'GIS' coincide."

April 8, 2015



Key Principle ► Employing the agile methodology will deliver immediate value to your business today and into the future





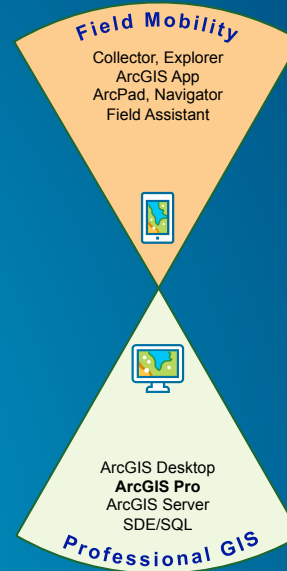
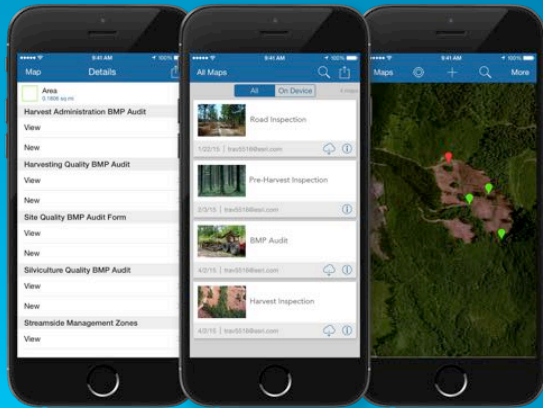
ArcGIS Platform

Professional GIS / Data Management

This section highlights the ArcGIS Professional GIS components and the types of data they manage. On the left, several data visualizations are shown: a 3D point cloud of a forest, a satellite image of a city, a map of the world with a grid, a map of the United States with a grid, a map of the world with a grid, and a 3D visualization of a landscape. On the right, a yellow triangle contains the ArcGIS logo and the text: 'ArcGIS Desktop', 'ArcGIS Pro', 'ArcGIS Server', 'SDE/SQL', and 'Professional GIS'.

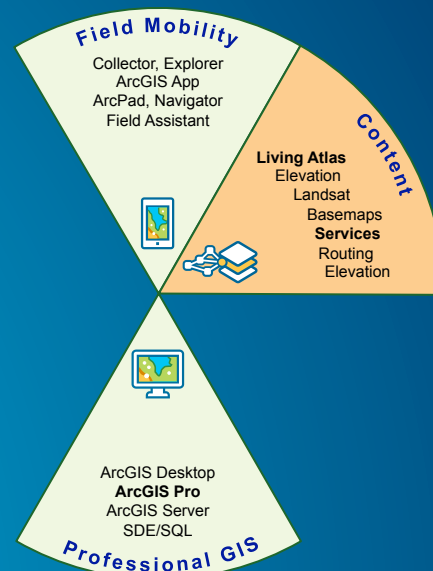
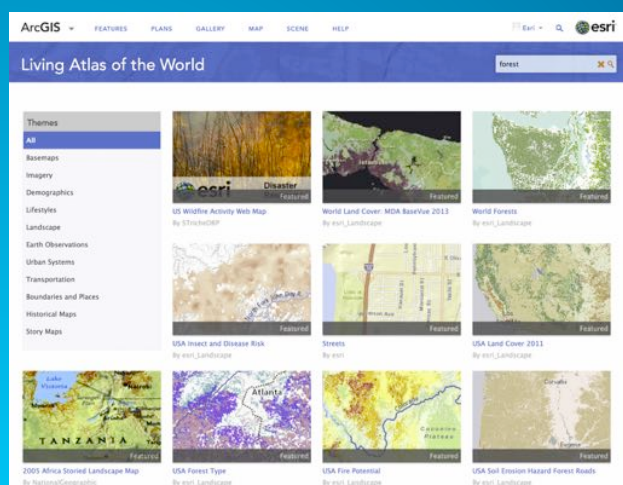
ArcGIS Platform

Field Mobility



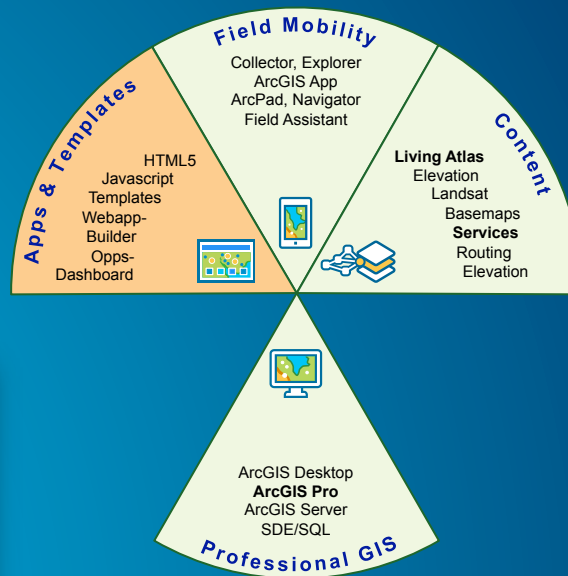
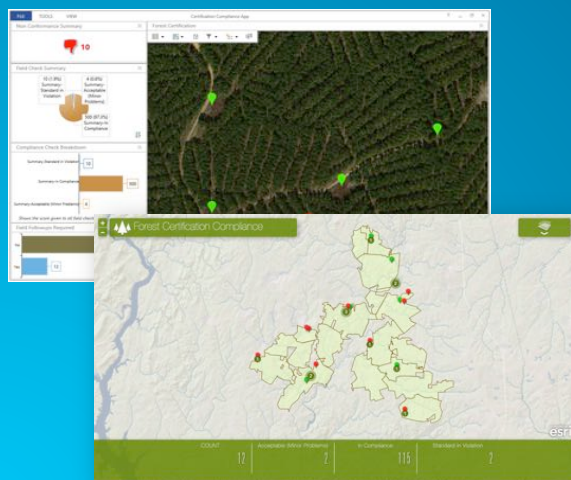
ArcGIS Platform

Authoritative Content



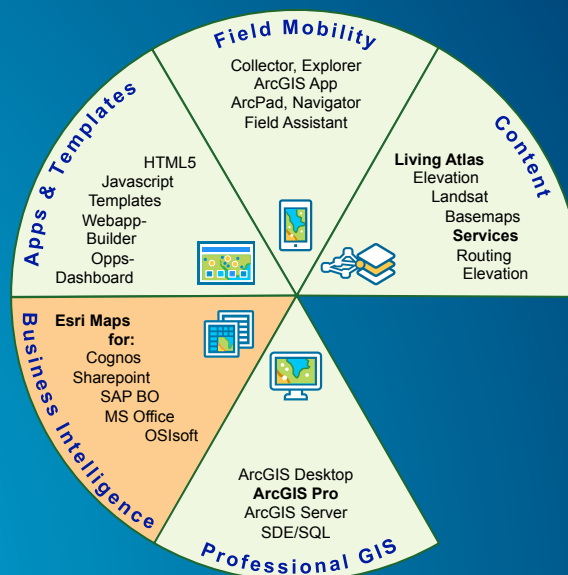
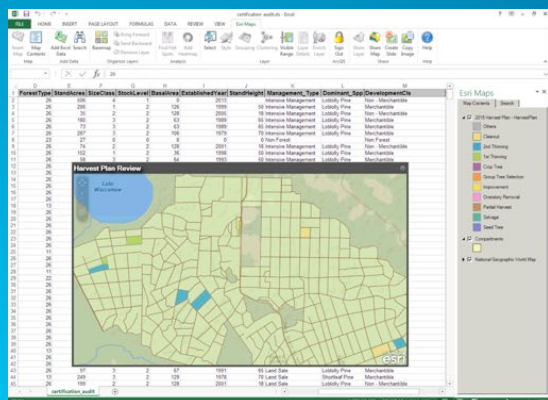
ArcGIS Platform

Apps and Templates



ArcGIS Platform

Business Intelligence



ArcGIS Platform

Customization

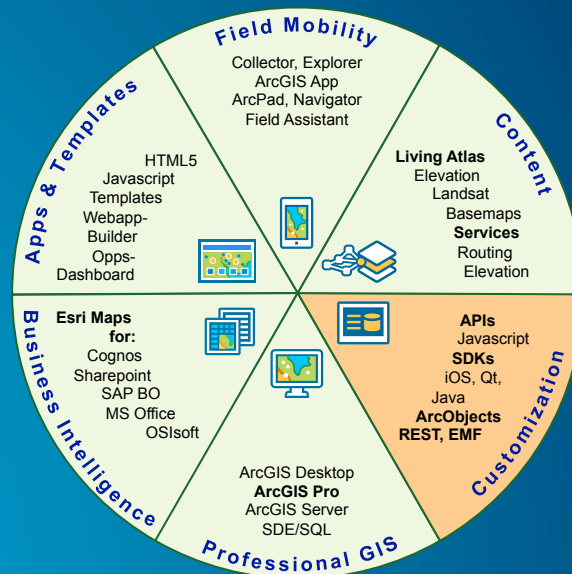


Process

```
out_pb = (-82.379 + np.multiply(2.04901523, t_pb) + np.multiply(10.14331127, rh_pb)
          - np.multiply(0.2267551, rh) - np.multiply(0.00063783, tsquare)
          - np.multiply(0.05481717, rhsquare) + np.multiply(0.0812874, rhsquare)
          + np.multiply(0.00005282, trhsquare) - np.multiply(0.00000195, ts_rhs))
```

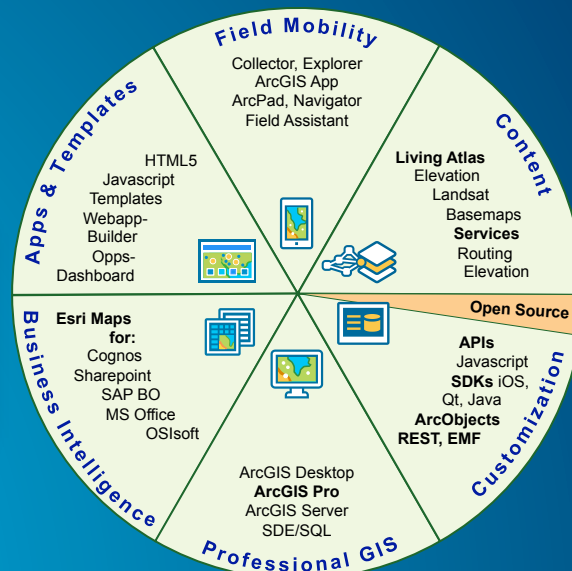
Output

```
def bind(self, **kwargs):
    kwargs["output_rasterinfo"]["bandcount"] = 1
    kwargs["output_rasterinfo"]["pixeltype"] = "32_BIT_FLOAT"
    return kwargs
```



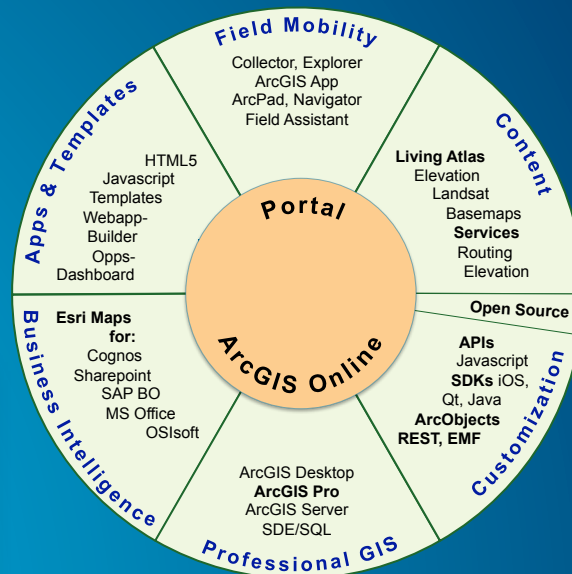
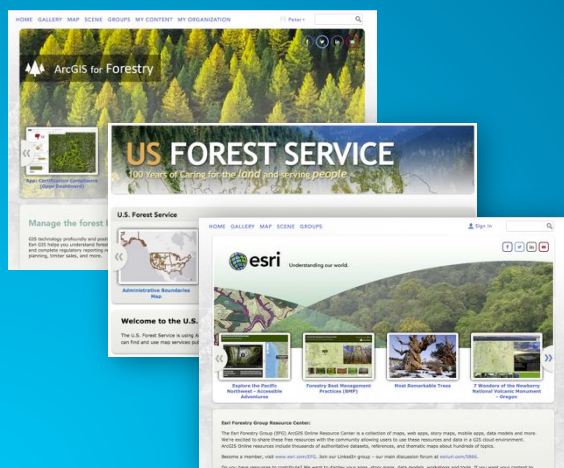
ArcGIS Platform

Open Source



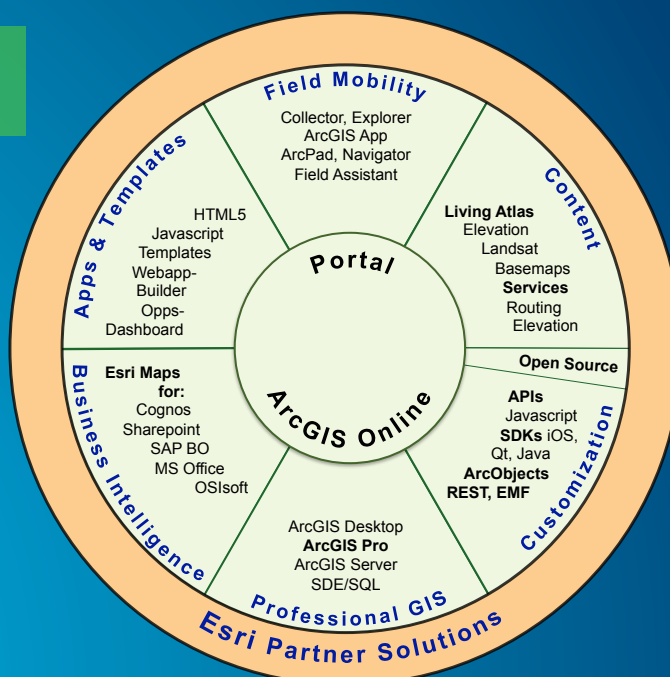
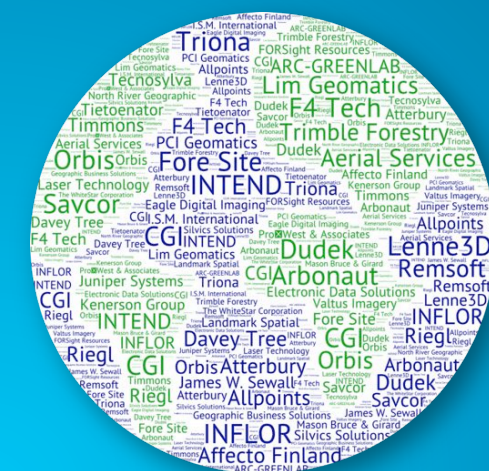
ArcGIS Platform

Portal / ArcGIS Online



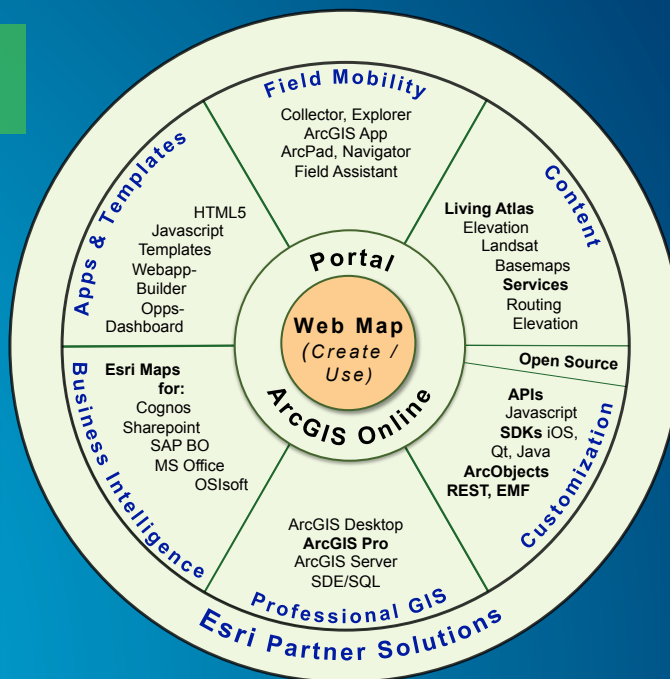
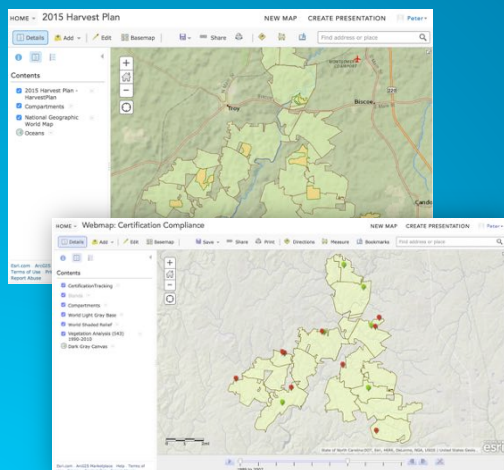
ArcGIS Platform

Partner Solutions



ArcGIS Platform

Web Map



Web Map:



Ready to use intelligent map.



Identifies the location of data resources.



A way to "mashup" of all your data.



Defines symbology.



Metadata for sharing.

