

# **Role of the Forest Resource: Resource Based Strategies**

**Michigan Biomaterials Initiative**

**Traverse City, Michigan  
October 3, 2013**

**Doug Denico, State Forester**  
**Department of Agriculture, Conservation & Forestry**  
Maine Forest Service  
22 State House Station  
Augusta, Maine 04333  
[www.maineforestservice.org](http://www.maineforestservice.org)

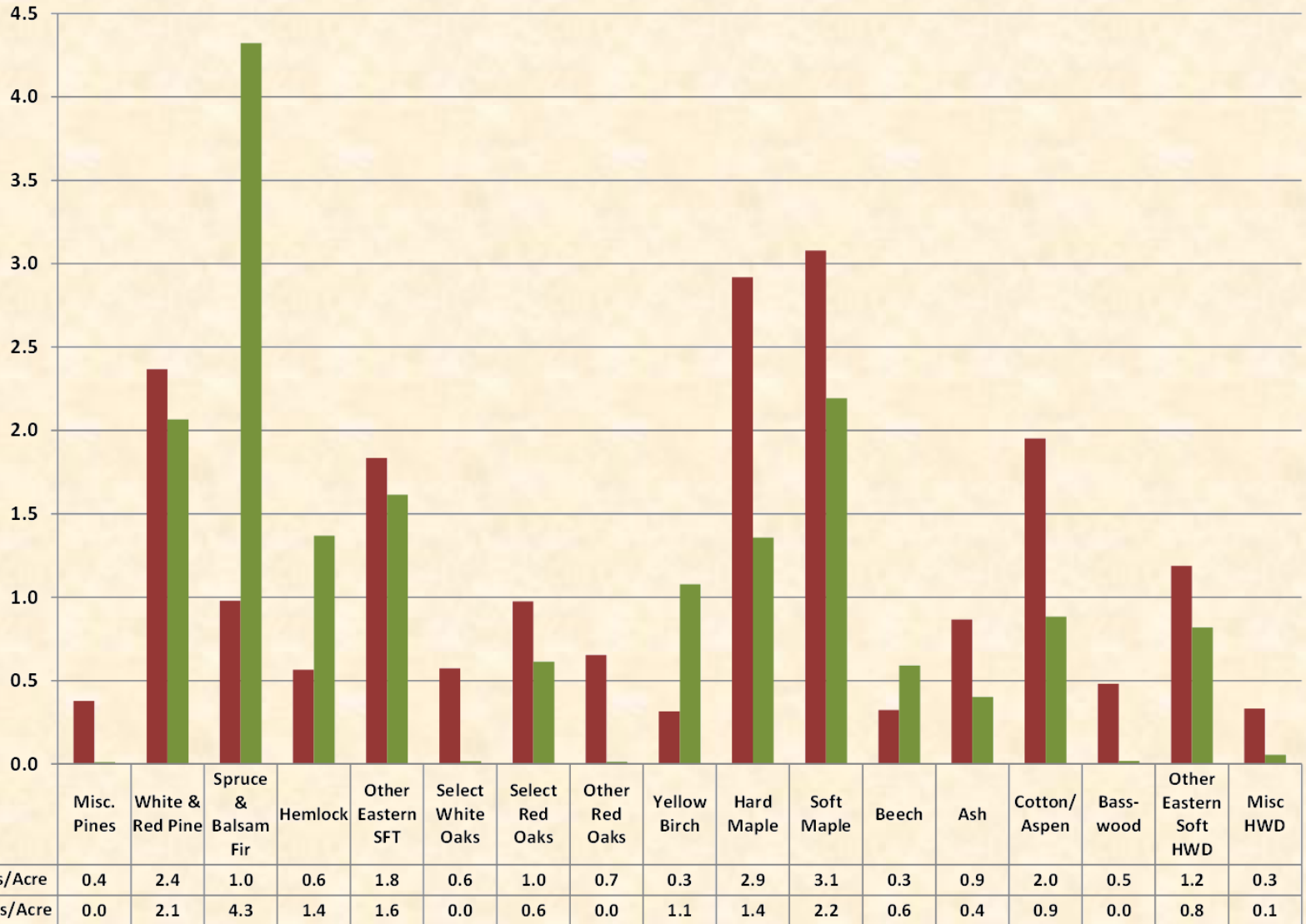


## All live volume (cords/acre) between Michigan and Maine, 2012

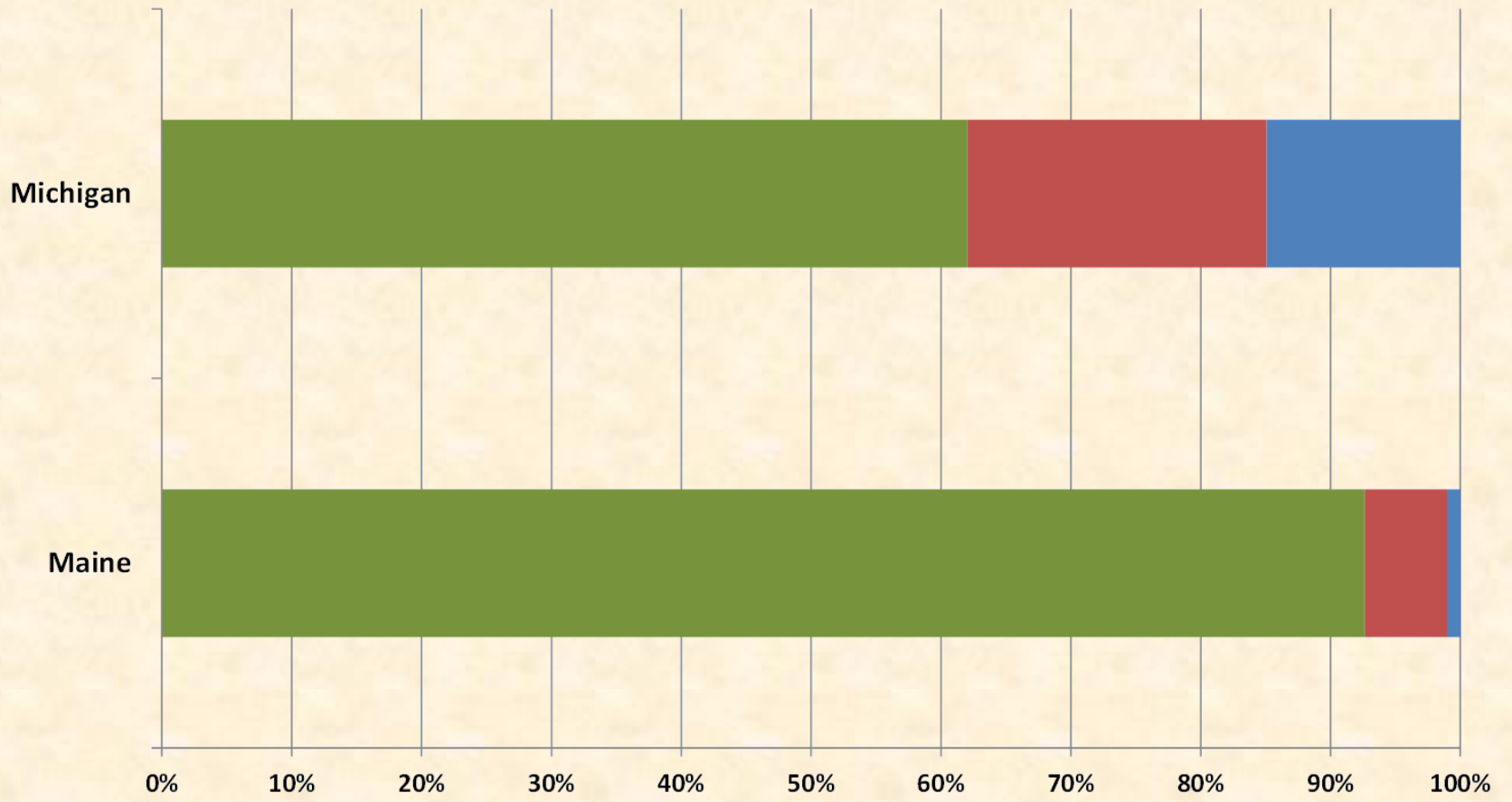


	MI Cords/Acre	ME Cords/Acre
■ All Hardwoods	13.7	8.0
■ All Softwoods	6.1	9.4

## All Live Volume (Cords/Acre) comparison between Michigan and Maine, by species grouping, 2012

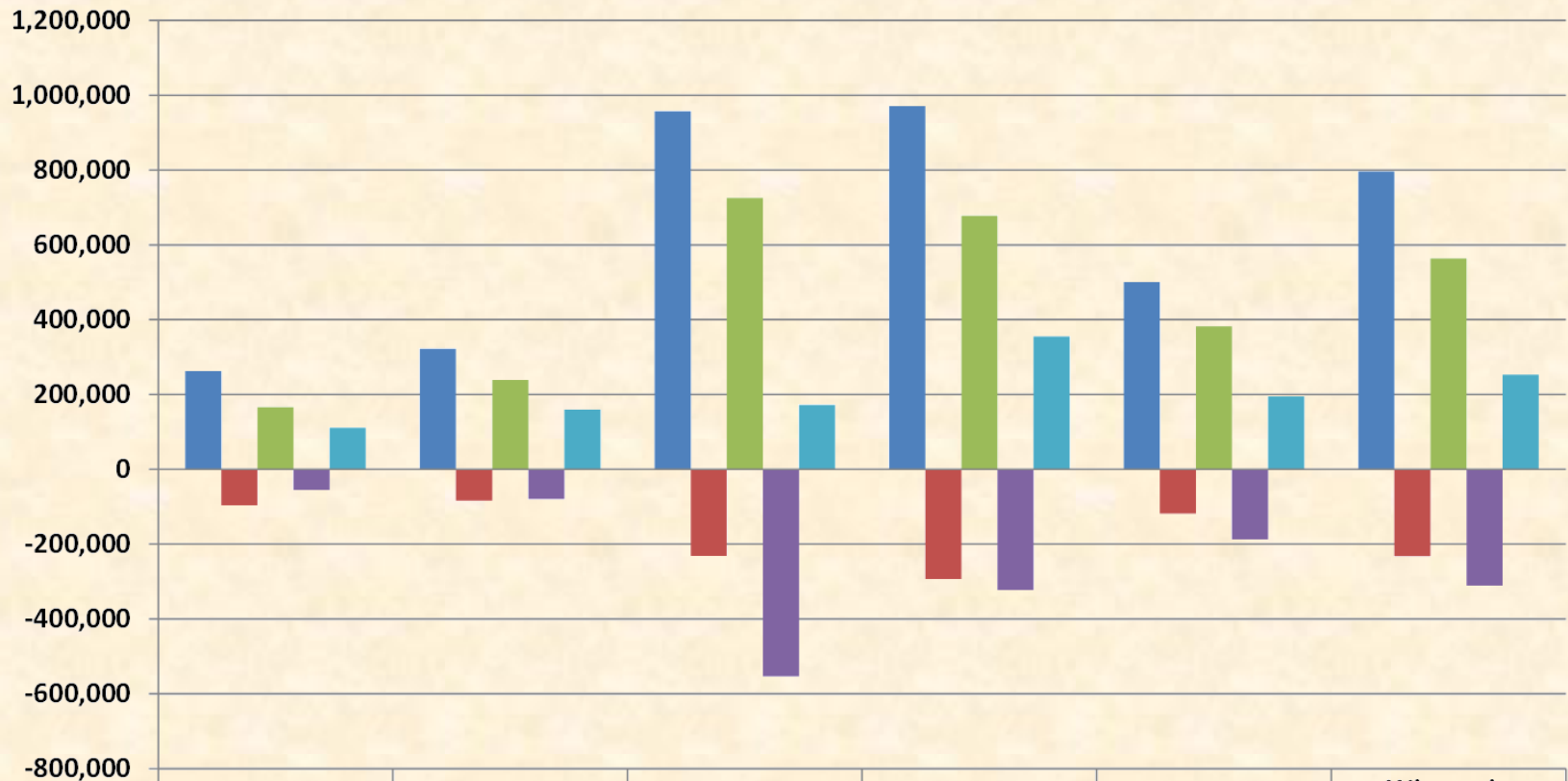


## Maine and Michigan owner group share of forestland, 2012 inventory year (thousand acres)



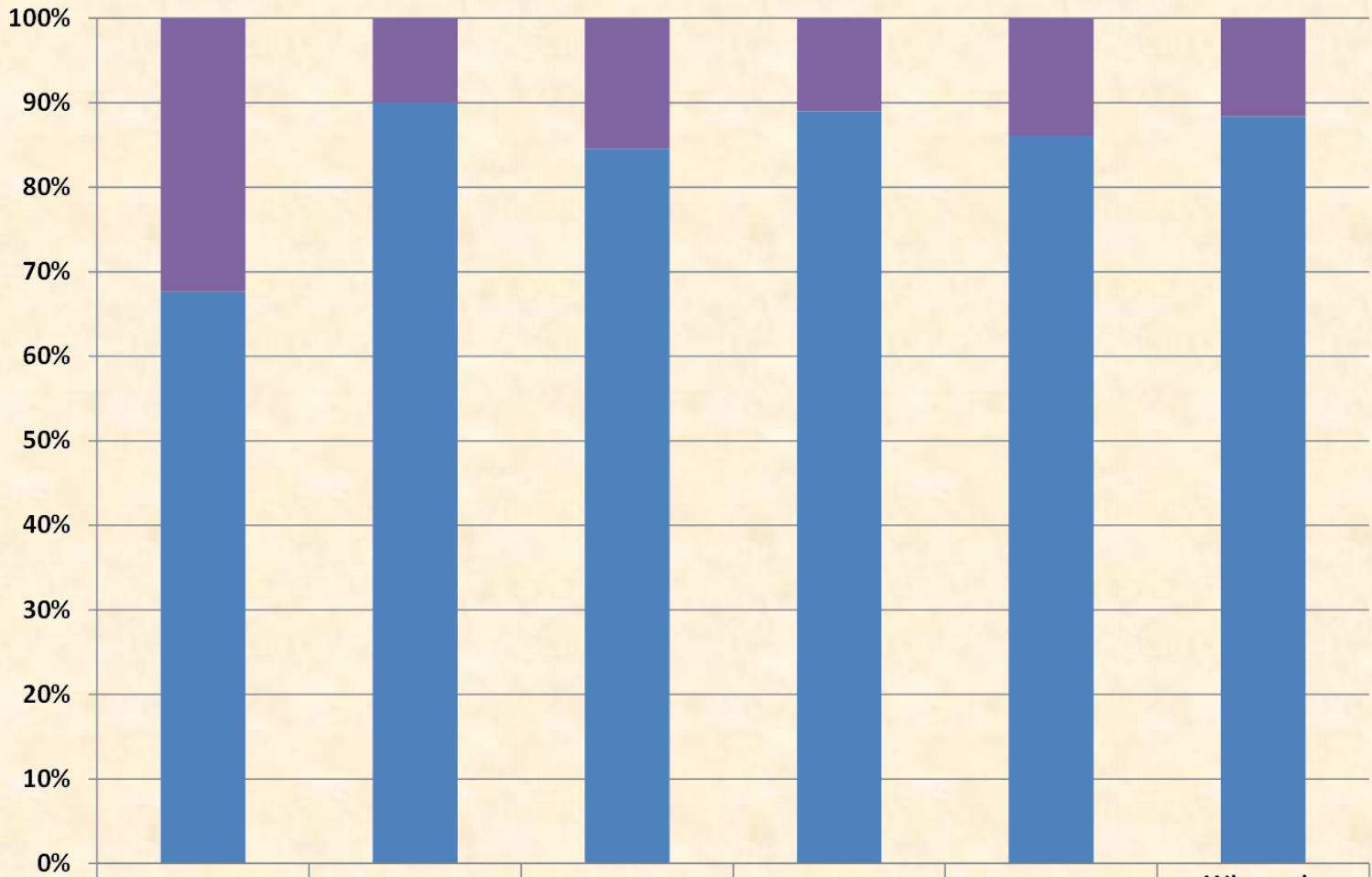
	Maine	Michigan
■ Private	16,339	12,590
■ State & Local	1,113	4,676
■ Federal	186	3,031

## Major components of change for Michigan and surrounding states, timberland and growing stock basis, 2011/2012 inventory year



	Illinois (2012)	Indiana (2012)	Maine (2012)	Michigan (2012)	Ohio (2011)	Wisconsin (2011)
■ Gross Growth	262,907	322,371	956,800	971,199	500,443	796,034
■ Mortality	(96,454)	(83,729)	(231,215)	(293,369)	(118,217)	(232,017)
■ Net Growth	166,453	238,642	725,585	677,830	382,226	564,017
■ Removals	(55,256)	(78,915)	(553,551)	(322,658)	(187,154)	(310,815)
■ Net Change	111,197	159,727	172,034	355,172	195,072	253,202

**Distribution of annual roundwood harvest by destination  
(MMCF volume is data table, percent share in chart)**



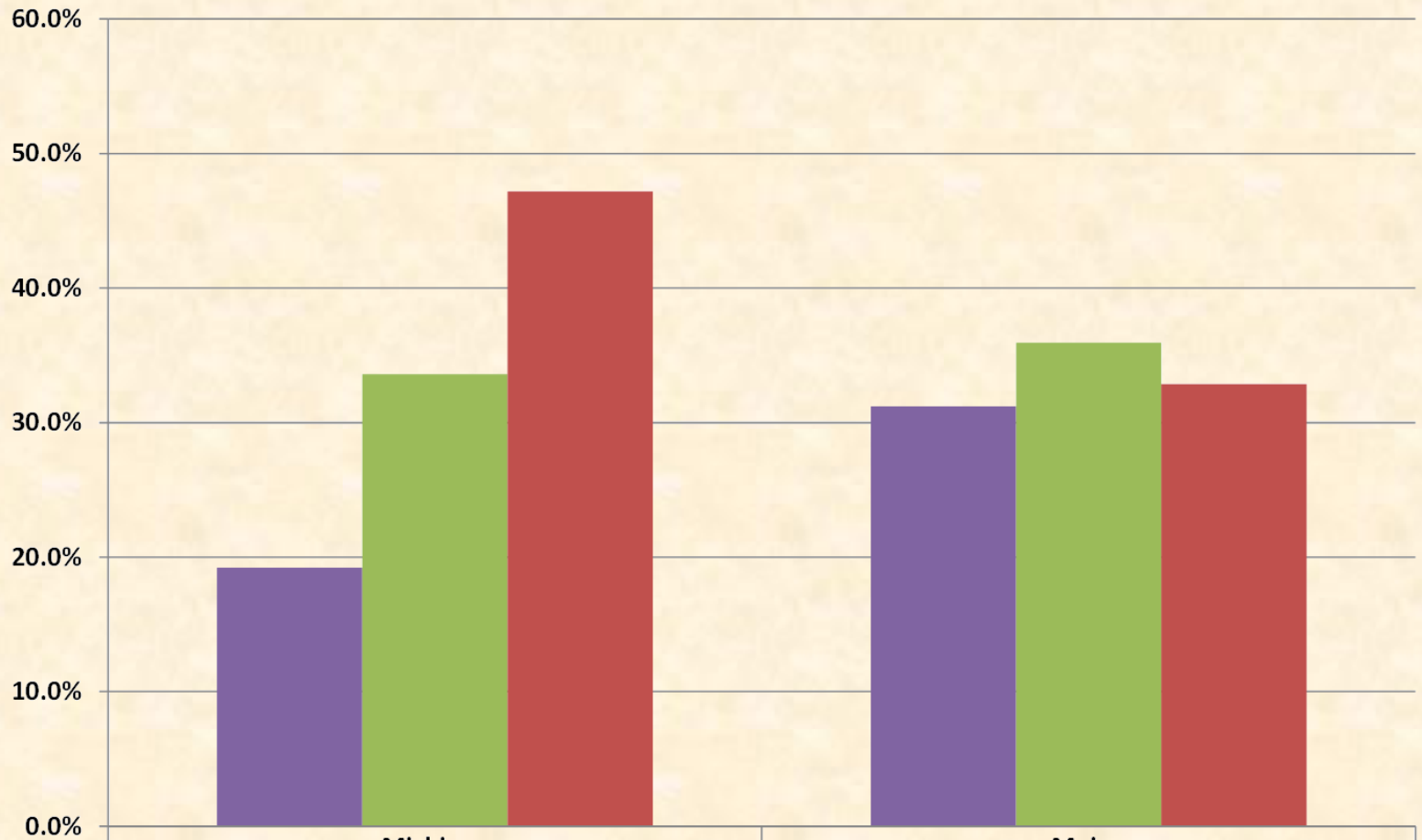
<b>Exported</b>	11	8	78	35	13	30
<b>In-State Processing</b>	23	71	428	284	79	231

### Distribution of annual roundwood processing by origin (MMCF volume is data table, percent share in chart)



■ Imported	1		127	30	30	
■ In-State Processing	23	71	412	284	79	231

### Comparison of statewide distribution of stand size class, on timberland acres, 2012



■ Seedling/Sapling & Nonstocked	19.2%	31.2%
■ Poletimber	33.6%	35.9%
■ Sawtimber	47.2%	32.9%

**Michigan**

19.2%

33.6%

47.2%

**Maine**

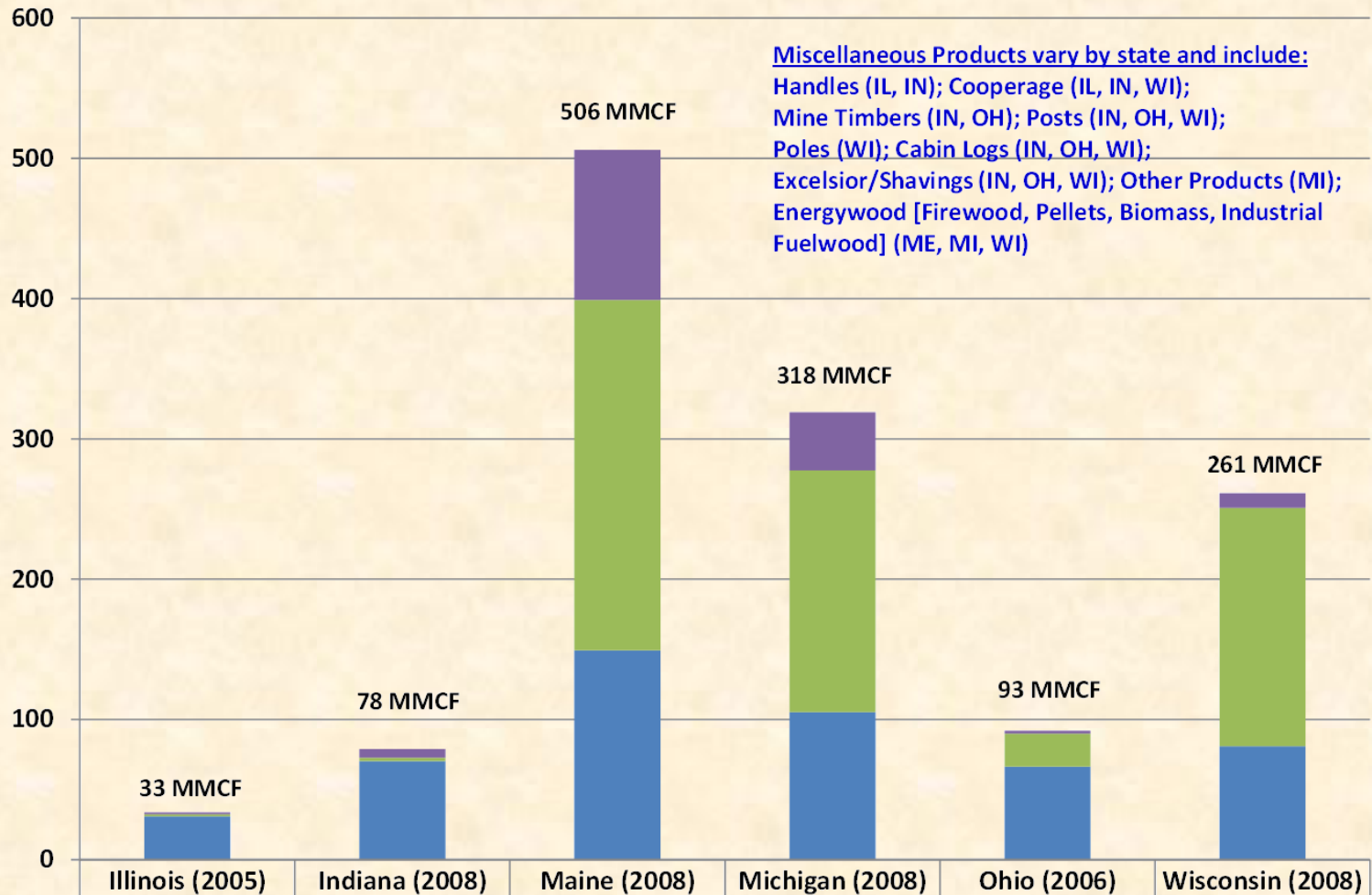
31.2%

35.9%

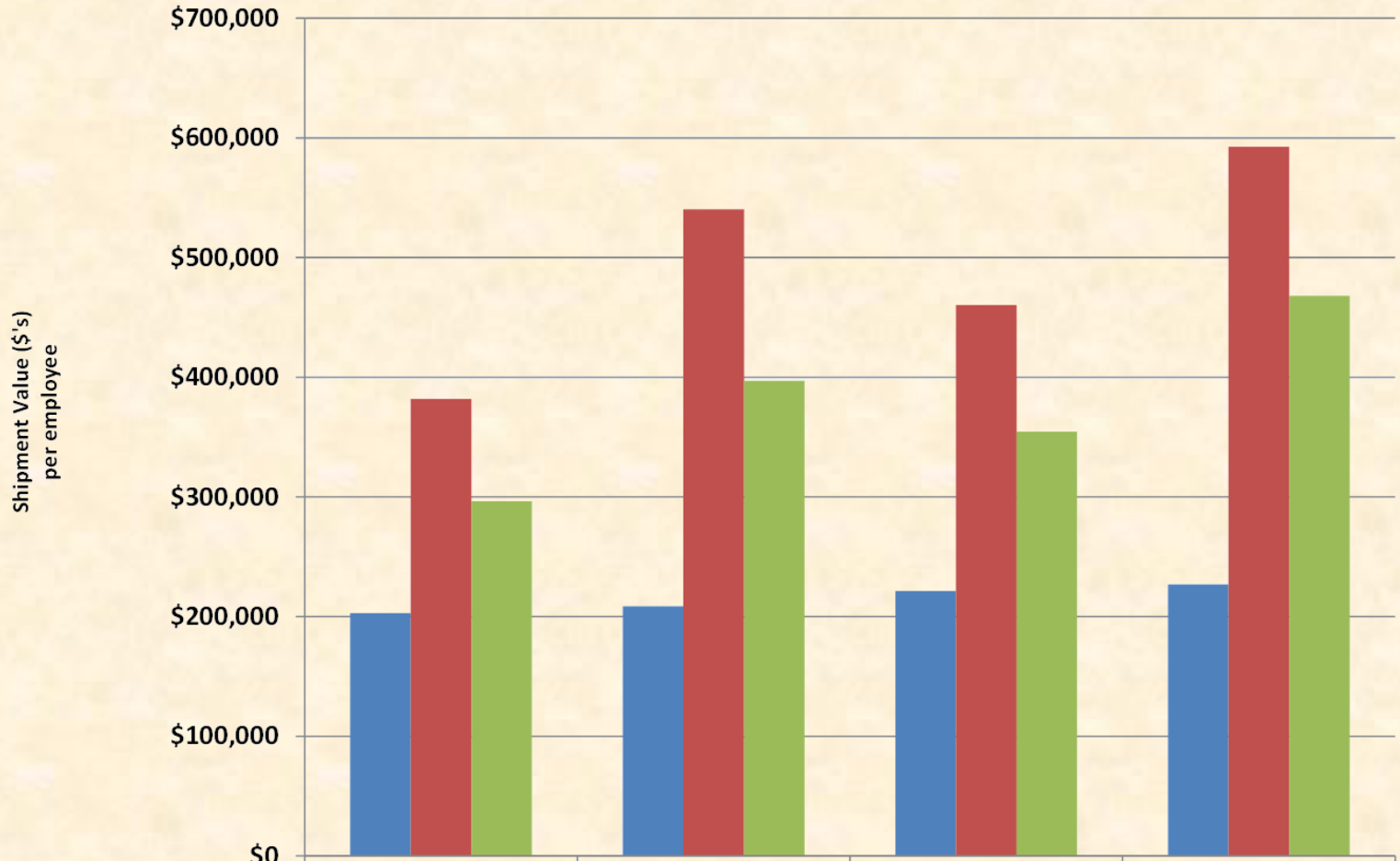
32.9%



## Distribution of annual roundwood harvest by product (MMCF volume is data table, percent share in chart)



## Average value of shipment (\$'s) per employee in two major NAICS groups, by state, 2007 and 2011



	Michigan 2007	Maine 2007	Michigan 2011	Maine 2011
■ 321 - Wood Product Manufacturing	\$202,896	\$208,530	\$221,383	\$226,827
■ 322 - Paper Manufacturing	\$381,835	\$540,384	\$460,278	\$592,548
■ Overall Average	\$296,222	\$397,005	\$354,366	\$467,969

- **Promote Active Forest Management**
- **Predictable Regulatory Framework**
- **Risk Takers**

**Thank you**