

Presenter Biographies (alphabetical order)

Changing Forests in a New Climate: What Might A Forest Manager Do?

Sponsored by The Michigan Society of American Foresters and the Canadian Institute of Forestry, Central Ontario Section, 30 April – 1 May, 2013

Special thanks and acknowledgment to those who helped plan this conference: Bill **Cook** (MSU Extension), Amy **Eagle** (Michigan DNR), Stephen **Handler** (USFS NIACS), Les **Homan** (retired Michigan DNR, MSAF, CIF), Bernie **Hubbard** (consultant, MSAF), Tom **Noland** (Ontario MNR), Ben **Phillips** (consultant, CIF), Lesley **Phillips** (consultant, CIF). Additionally, considerable time and resources were provided by the USFS Northern Institute of Applied Climate Science.



Dr. Jeff Andresen – Michigan State University, East Lansing, Michigan, andresen@msu.edu

Jeff Andresen is associate professor of meteorology/climatology with Michigan State University's Department of Geography, Extension Specialist with Michigan State University Extension, and the State Climatologist for Michigan. Dr. Andresen has professional experience with the National Weather Service and with the USDA's World Agricultural Outlook Board in Washington, D.C. Current and past research themes include climatological trends and potential impacts, crop simulation modeling, agricultural irrigation, impacts associated with potential future changes in climate, weather and risk management, and the influence of land use changes on regional climate.



Isabelle Aubin – Natural Resources Canada, Sault Sainte Marie, Ontario, Isabelle.Aubin@NRCan-RNCan.gc.ca

<http://cfs.nrcan.gc.ca/employees/read/iaubin>

Isabelle Aubin is a research scientist in vegetation ecology at the Great Lakes Forestry Centre-Canadian Forest Service (NRCan) and adjunct professor at University of Québec in Rimouski. Forest community ecologist and lead researcher of the Traits Of Plants In Canada (TOPIC) network, her main research interest is on functional assessment of ecosystem response to human-induced changes.



Dr. Andy Burton - Michigan Technological University, School of Forest Resources and Environmental Science, Houghton, Michigan, ajburton@mtu.edu

Dr. Andrew Burton is a professor of forest ecology in the School of Forest Resources and Environmental Science at Michigan Technological University. Dr. Burton has a BS in forestry and MS in forest soils and hydrology, both from Michigan State, and a PhD in forest ecology from Michigan Tech. He currently teaches Forest Ecology, Advanced Terrestrial Ecology and is lead instructor for Michigan Tech's annual Global Change Teacher Institute. His research examines the effects of global change factors on carbon and nutrient cycling, stand health and productivity, and belowground processes in forest ecosystems. He has published 56 papers in peer-reviewed journals, and authored 66 presentations at professional meetings. Dr. Burton is Director of the Ford Center and Research Forest and Director of the Ecosystem Science Center at Michigan Tech. He also served as the Director of the Midwestern Regional Center of the DOE National Institute for Climatic Change Research from 2007 through 2012.



Dr. David Flaspohler - Michigan Technological University, School of Forest Resources and Environmental Science, Houghton, Michigan, djflaspo@mtu.edu

David Flaspohler grew up near Kalamazoo, Michigan, attended the University of Michigan as an undergrad and the University of Wisconsin-Madison for his M.S. and PhD. in Wildlife Ecology. Since joining the faculty in the School of Forest Resources and Environmental Science at MTU in 1998, he has conducted research into the effects of human land use on the survival, reproductive success and behavior of birds in the Great Lakes region, Hawaii, and in Latin America.



Jon Fosgitt - Compass Land Consultants, Michigan,

jon@compasslandconsultants.com

<http://www.compasslandconsultants.com>

Jon Fosgitt is a forest management specialist with CLC. Jon currently manages 24,000 acres of FSC certified land for a large national conservation organization. Jon's lengthy experience with silvicultural systems has helped him develop alternative management regimes, with a focus on forestland restoration. In addition to this responsibility, Jon oversees CLC's client development and relations on operations, and frequently helps clients with policy and planning projects.



Stephen Handler - USFS Northern Research Station & the Northern Institute of Applied Climate Science, Houghton, Michigan, sdhandler@fs.fed.us

Stephen is a Climate Change Specialist with the US Forest Service Northern Research Station and the Northern Institute of Applied Climate Science. At NIACS, his primary project is to co-ordinate the Northwoods Climate Change Response Framework, focusing on Michigan and Minnesota. This effort includes preparing climate change vulnerability assessments, working with partners across the forestry community, and planning on-the-ground demonstration activities to model climate-informed forest management. Stephen joined NIACS in February 2011.



Dr. Bob Heyd – Michigan Department of Natural Resources, Marquette, Michigan, heydr@michigan.gov

Forest Pest Management Program Manager

Forest Health and Monitoring Unit, Forest Resources Division, Michigan DNR

34 years with the MDNR Forest Health Program

Stationed in Marquette, Michigan (On the southern shore of Lake Superior with spectacular sunrises.)

Michigan State University: M.S. Forest Ecology & PhD Forest Entomology



Les Homan – Retired Michigan Department of Natural Resources, Newberry, Michigan, lhoman@up.net

Les has been a forester for over 35 years, working as a procurement forester, field forester, regeneration auditor and crew supervisor, forest planner, forest management supervisor, public information officer, and forest certification auditor. He has worked for a private logger, forest industry, the US Forest Service, the city of Ann Arbor, and the State of Michigan, retiring in 2010. He has been a member of SAF since 1987, serving as UP chapter treasurer, a national working group chair, and on the 1998 national convention team. He has been a member of the CIF since 1988, serving on section council, and as its chair and director/representative to the national council. He has had opportunity to observe forest practices in Canada, China, and Ukraine, as well as different parts of the US.



Bernie Hubbard – Michigan Society of American Foresters State Chair, Newberry, Michigan, forestmeister@sbcglobal.net

Bernie has worked in forestry over 40 years, including the US Fish and Wildlife Service, Michigan Department of Natural Resources, and currently is owner of Forestry Solutions LLC. He has worked as a Refuge Forester, Seney National Wildlife Refuge, field forester, Area Forester, District Forest Manager, Upper Peninsula Forest Supervisor and Michigan State Forester/Assistant Division Chief, Michigan Department of Natural Resources and consulting forester working primarily in forest certification auditing and small city and community urban forest management planning. He is currently Chair of the Michigan SAF. He was on the planning committee for the 1998 National convention in Traverse City, State Chair 2000, served on the Certification Review Board, SAF Council 2005-2007, and as National SAF president-elect, president, and past president 2008.



Maria Janowiak - USFS Northern Research Station & the Northern Institute of Applied Climate Science, Houghton, Michigan, mjanowiak02@fs.fed.us

Maria is a scientist for climate change adaptation and carbon management at the Northern Institute of Applied Climate Science, where she has worked for more than five years to communicate information on climate change, carbon, and bioenergy to forest owners and natural resource professionals. She currently co-coordinates the Northwoods Climate Change Response Framework project, developing resources for adapting ecosystems to a changing climate and establishing on-the-ground demonstrations of forest adaptation activities. Maria has a Bachelor's in Forestry and a Masters in Forest Ecology and Management from Michigan Tech.



Dr. Linda Nagel - Michigan Technological University, School of Forest Resources and Environmental Science, Houghton, Michigan, lmnagel@mtu.edu

Dr. Linda Nagel is an Associate Professor of Silviculture in the School of Forest Resources and Environmental Science at Michigan Tech. She teaches two silviculture courses at Michigan Tech's Fall Camp, and a graduate course in Forest Vegetation Dynamics. Her research focuses on stand structure and vegetation response to silvicultural treatments, invasive species ecology and control, and adaptive management strategies in the face of an uncertain future climate. Linda has directed and taught 12 advanced silviculture training courses as part of the silviculture certification program for the US Forest Service and the Bureau of Indian Affairs. She has also co-taught two climate change courses for the US Forest Service. She will start a new position in late August as the Director of Operations at the Cloquet Forestry Center/Professor at the University of Minnesota.



Dr. Tom Noland – Ontario Ministry of Natural Resources, Sault Sainte Marie, Ontario, tom.noland@ontario.ca

Thomas L. Noland received his B.S. degree in forest science from The Ohio State University, Columbus, his M.S. in forestry from the University of Wisconsin, Madison, and his Ph.D. in plant sciences from the University of Arkansas, Fayetteville. His Ph.D. research was on the physiology and biochemistry of seed dormancy in sugar pine. After three postdoctoral positions working on conifer tissue culture, seed physiology, and plant molecular biology, he accepted a position as Tree Biochemist with the Ontario Forest Research Institute in Sault Ste. Marie, Ontario in 1991. His research interests are tree stress biochemistry, pigment biochemistry, remote sensing, non-timber forest products (including bioenergy and bioproducts), and tree seed physiology and biochemistry. His current research projects range from determining the herbicide tolerance of eastern white cedar seedlings to examining the effects of forest management on Caribou forage quality.



Dr. Taylor Scarr - Ontario Ministry of Forest Resources, Sault Sainte Marie, Ontario, taylor.scarr@ontario.ca

Taylor Scarr is the Provincial Forest Entomologist with the Ontario Ministry of Natural Resources. Taylor has an undergraduate degree in forestry and a Ph.D. in forest entomology. Based in Sault Ste. Marie, Taylor provides provincial leadership and direction to forest health monitoring, insect control programs, research, and policy. Much of Taylor's current focus is on forest invasive species, but native insects, climate change, national strategies, and research also occupy a fair portion of his time.



Tim Schneider - J.M. Longyear, Marquette, Michigan
timschneider@jmlongyear.com

Timothy Schneider is the Forest Operations Manager for JM Longyear, LLC, overseeing land management and timber harvest operations on over 72,000 acres of FSC certified company owned lands in Michigan's Upper Peninsula, as well as forest operations on purchased stumpage. Tim manages a team of professional foresters and log yard staff which implements a harvest level over 100,000 cords annually. Longyear markets and delivers the forest products to local, regional and in some cases, global markets.

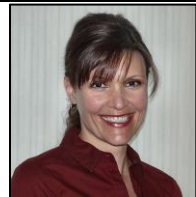
Tim has over 15 years' experience as a land management forester, the past 5 years with Longyear. Tim has broad experience in the management of northern hardwoods and other regional timber types found throughout the northern Midwest. Prior to Longyear, Tim worked as a forester for American Forest Management on large commercial forest holdings in the western Upper Peninsula which are currently owned by GMO, and have been managed for decades under previous commercial forest land owners.

Throughout his career, a major focus of his management and silviculture responsibilities is maintaining the health, vigor, value, and sustainability of the working forests he has been charged with managing. Tim holds a Bachelor of Science degree in Forestry from Michigan Technological University.



Chris Swanston - USFS Northern Research Station & the Northern Institute of Applied Climate Science, Houghton, Michigan, cswanston@fs.fed.us

Chris Swanston is a research ecologist at the US Forest Service's Northern Research Station and is director of the Northern Institute of Applied Climate Science (NIACS). Chris also serves as project lead for the Climate Change Response Framework (www.forestadaptation.org), co-chair of the Climate Change Resource Center (www.fs.fed.us/ccrc), chair of the science steering committee of the International Soil Carbon Network (www.soilcarb.net), and is a member of the science steering committee of the North American Carbon Program. Chris' primary research interest is in the biogeochemical mechanisms of carbon stabilization in soils, but he spends most of his time as director of NIACS engaging in climate change outreach, assessing vulnerability of ecosystems to climate change, and working with land managers to develop approaches to climate adaptation. Chris has a BS in natural resources planning from Humboldt State University in northern California, and a MS and PhD in forest science from Oregon State University.



Jessica Turino – Weyerhaeuser Corporation, Grayling, Michigan,
jessica.turino@weyerhaeuser.com

Ms. Turino is employed with Weyerhaeuser at the Grayling OSB mill as a procurement forester and has been involved with Weyerhaeuser's Sustainable Forestry Initiative (SFI) certification program throughout her career.

In addition to working with private landowners and loggers to procure raw material for the OSB manufacturing facility she also manages Weyerhaeuser's Eastern Procurement Certification Group.

This role and others have provided the opportunity to observe a variety of regional forest practices, logging operations, and management systems, resulting in obtaining a broad perspective into the ever changing role of forest management and raw material procurement.

Jessica is a graduate of Michigan Technological University, School of Forest Resources and Environmental Science, member of the Michigan SFI Committee, Michigan Timber Advisory Council, Presidential Council of Alumnae at MTU, School of Forest Resources and Environmental Science Advisory Board at MTU and Society of American Foresters.