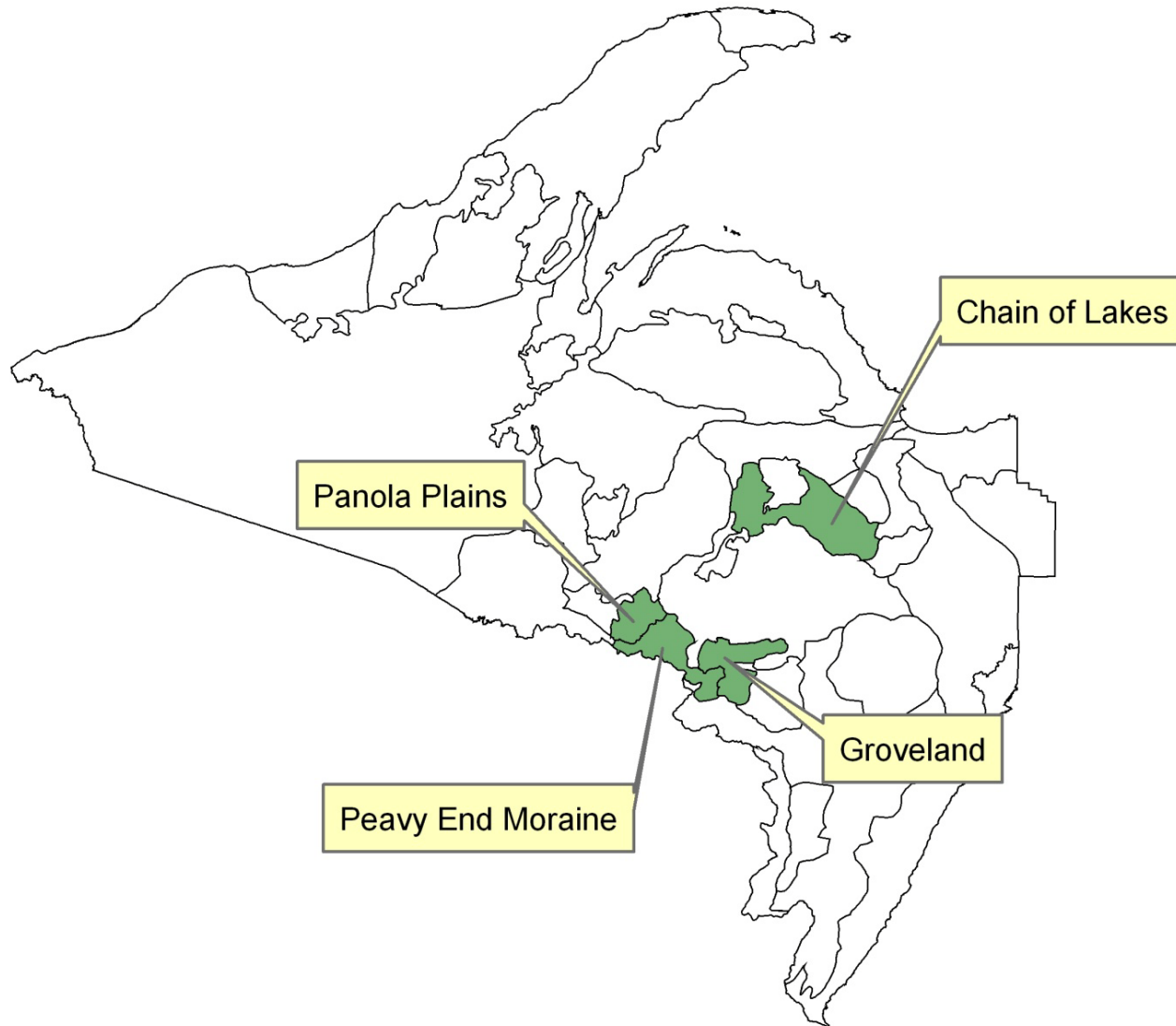




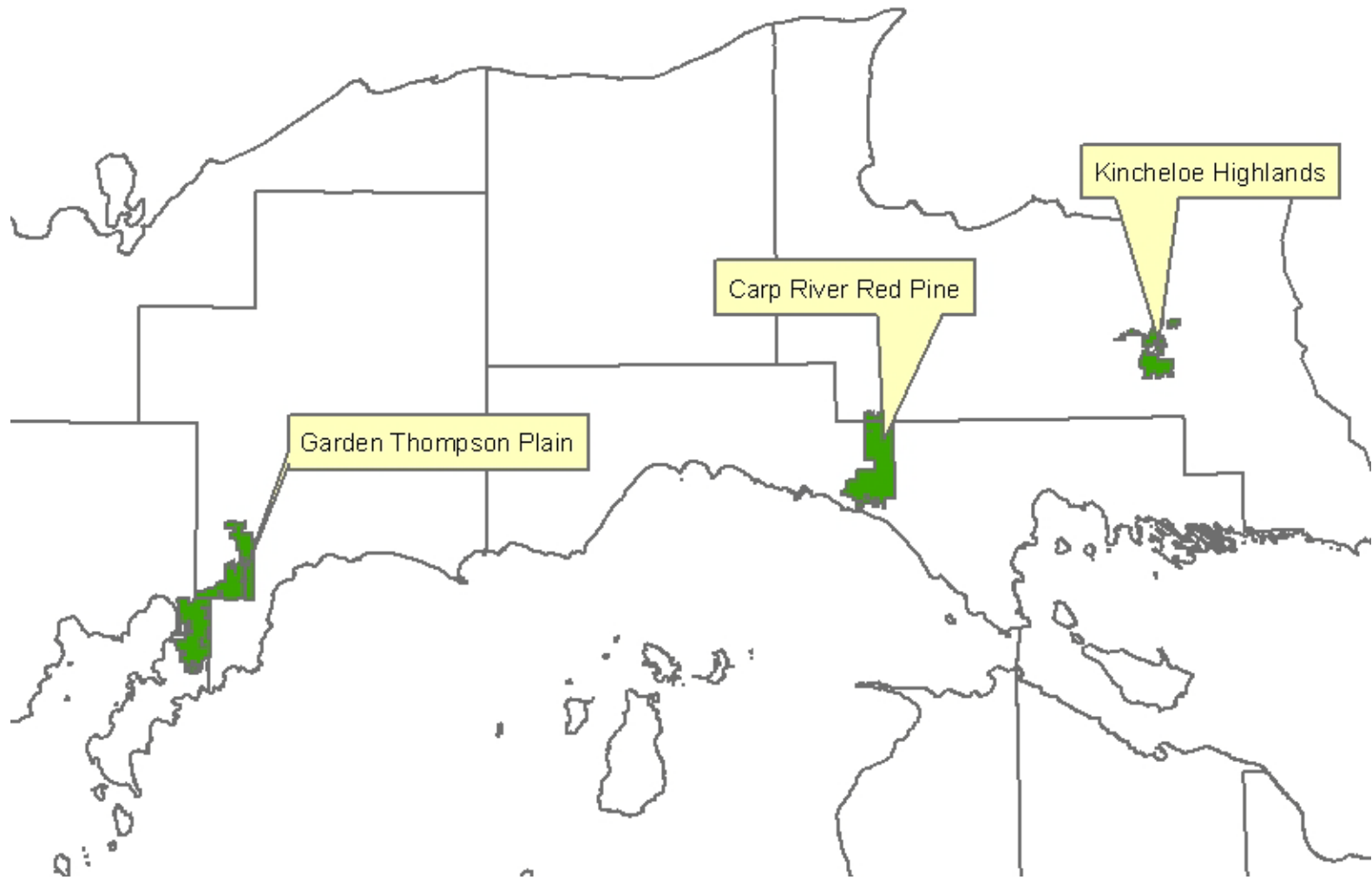
Panel Discussion: Managing Oak on Dry-Mesic Sites



Oak in dry mesic communities in WUP:

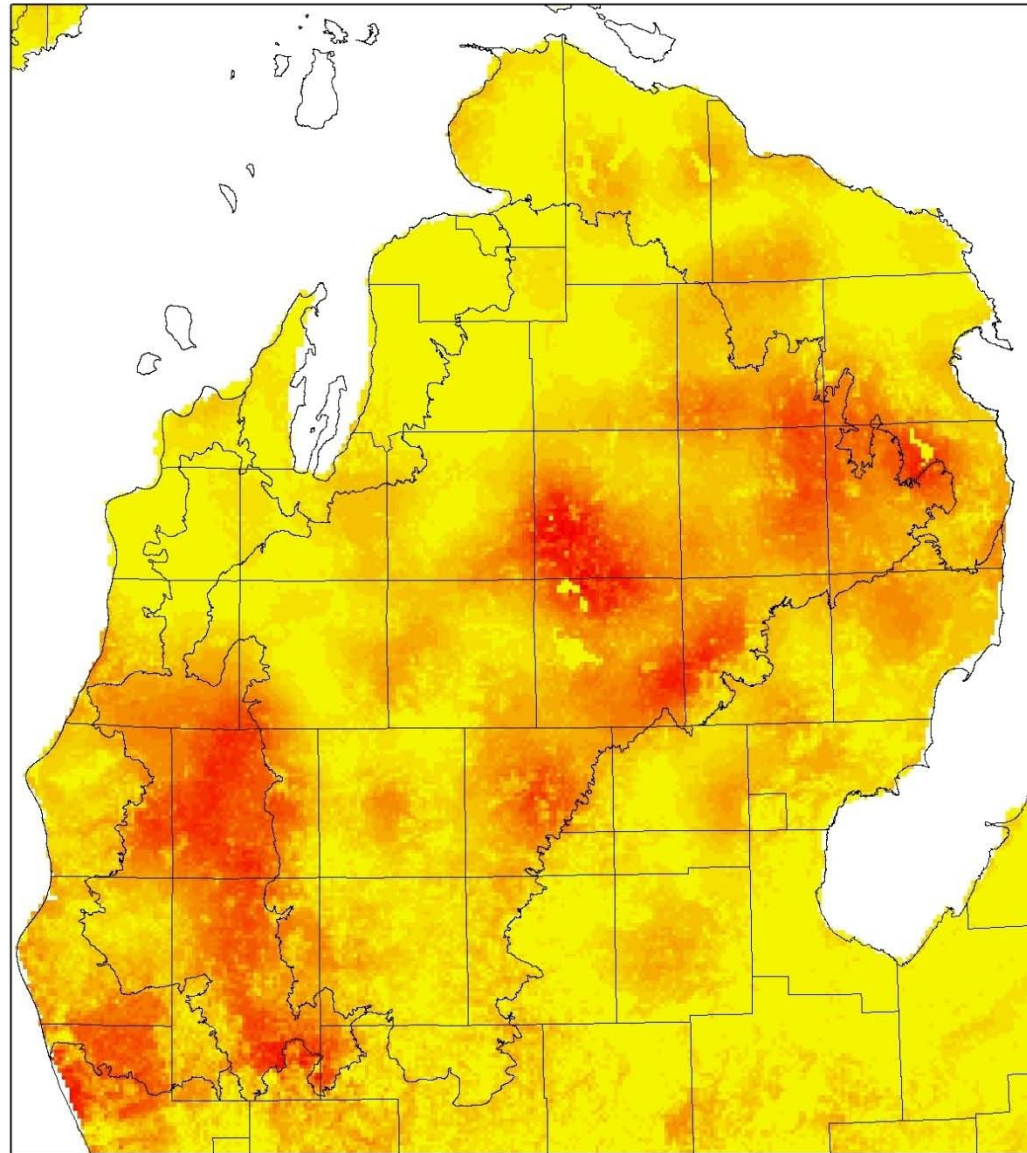


Oak in dry-mesic communities in the EUP



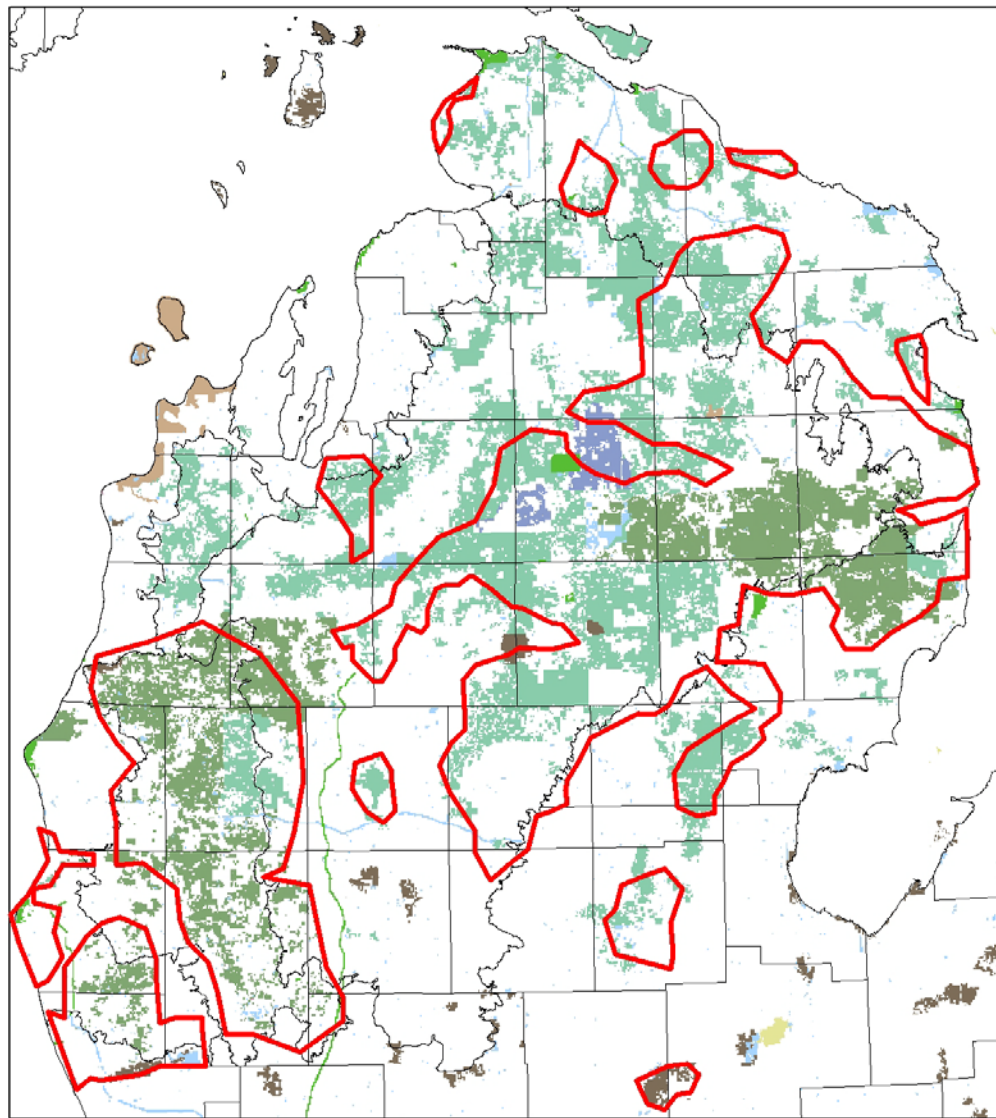


Predicted Red Oak Density (BA)








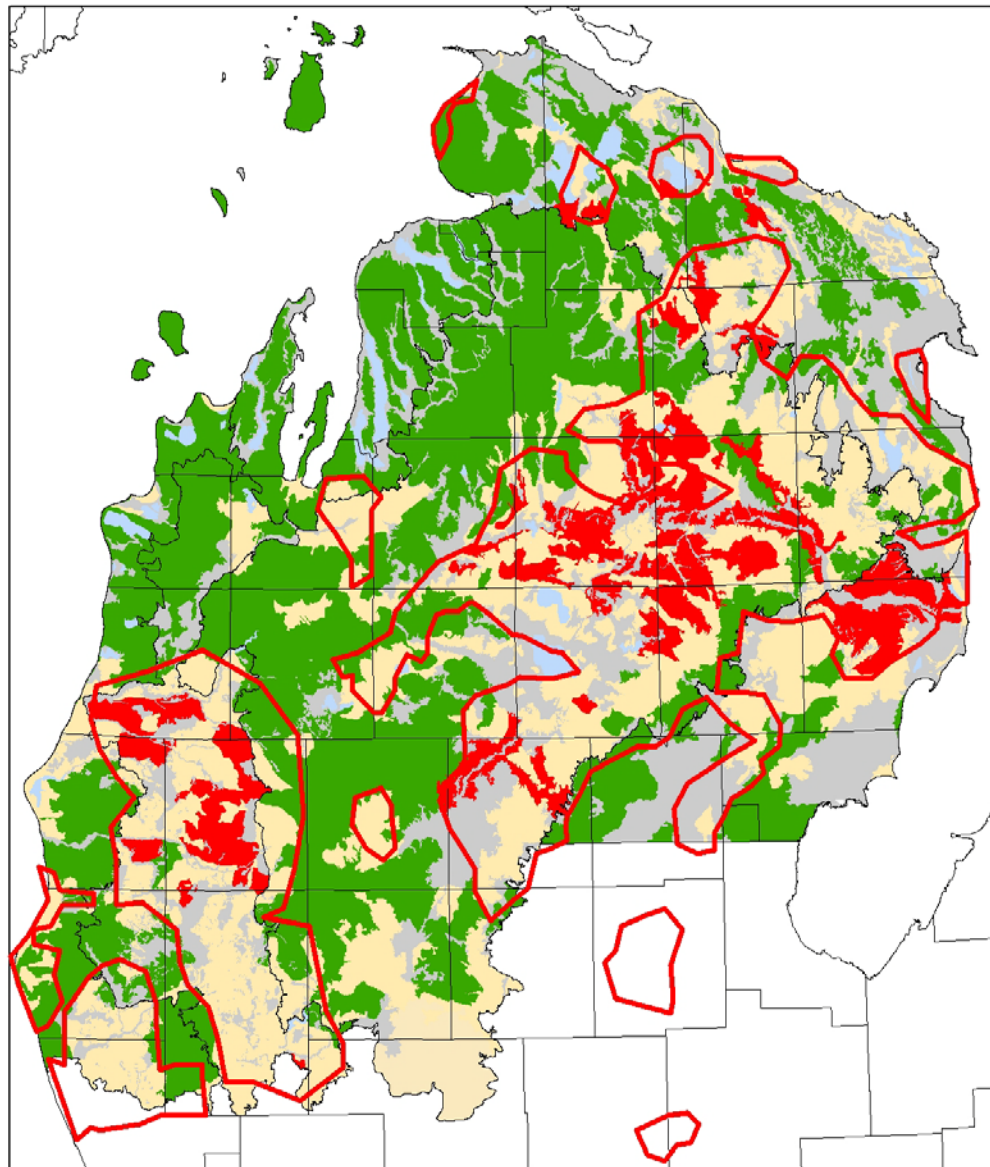
Public Land



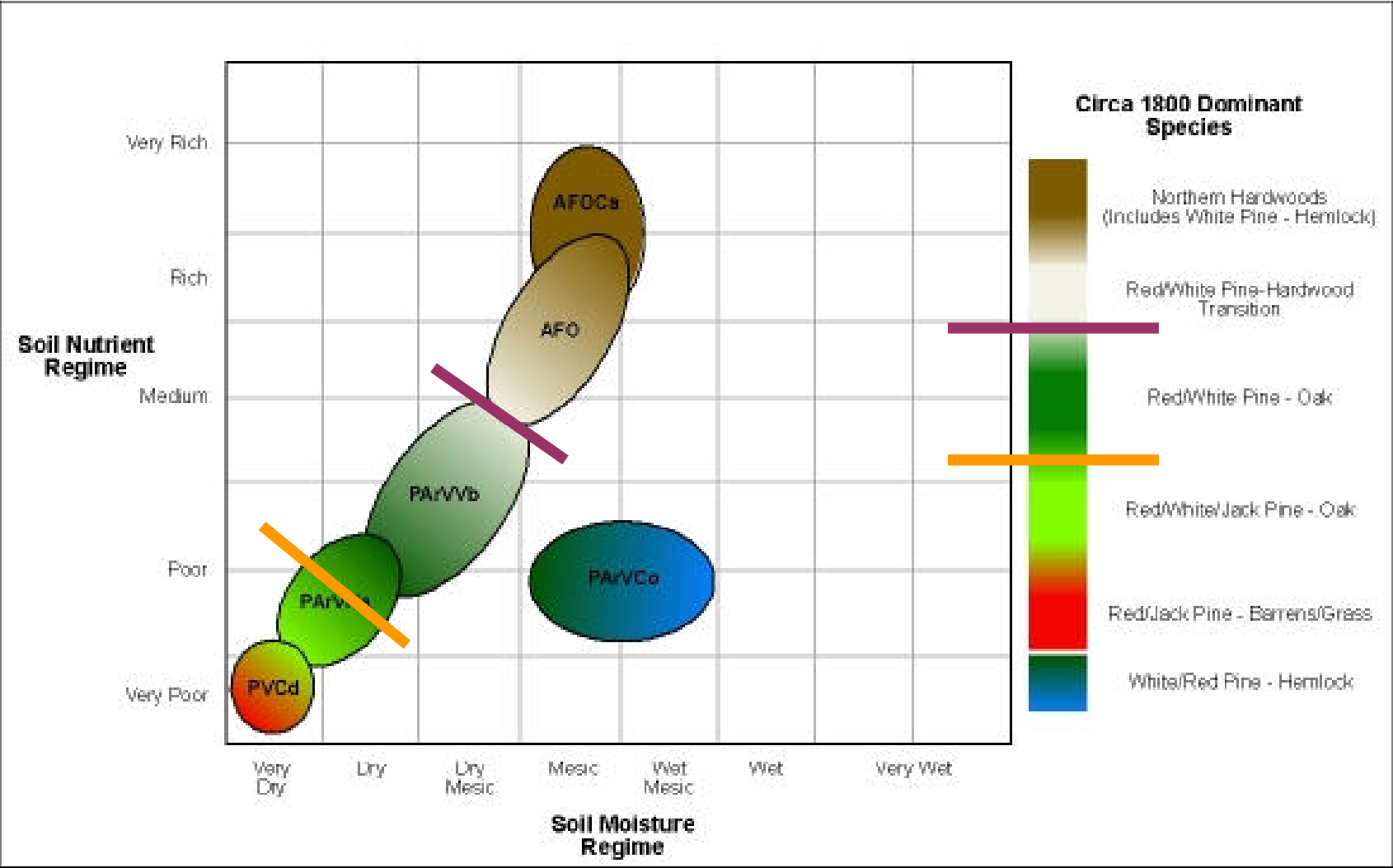


Potential Site Quality

-  Mesic
-  Dry-mesic
-  Dry (xeric)



NLP Kotar Habitat Types



What are the general patterns you see associated with topography, aspect, etc?



What other types of classification systems could be used to distinguish oak types in the northern forest?

What values determined the typical objectives for the oak resource on state, federal, and private land in the past?



What are the desired future conditions for these sites on the lands you administer?

What specific wildlife habitat and/or biodiversity issues affect regeneration practices you might choose to employ in oak stands?



How do you address these concerns on lands you administer?

To what extent do concerns about aesthetics or visual management issues affect the regeneration techniques you use for oak?



What specific modifications have you used, and have you been successful in allaying these concerns?

What criteria define “success” for oak regeneration on dry-mesic sites?



What proportion should consist of oak regen to be considered an oak stand?



Do you count non-oak species (aspen and red maple) as part of acceptable stocking?

What silvicultural criteria do you use to determine when an oak stand is ready to be regenerated?



If a stand is mature and ready for harvest, but there isn't any advanced oak regeneration present, what do you do?

Describe your experience using clear-cuts for regenerating northern red oak in the area you work.



What determined the success or failure in those circumstances?

Describe your experience using shelterwood treatments to establish advanced regeneration in your work area?



What techniques do you suggest when shelterwood treatments have been unsuccessful?

Has prescribed burning controlled competition adequately in the areas you work?



Did regeneration become established? Is it well positioned to become dominant when released?



Describe your success with other cultural treatments in your work area?

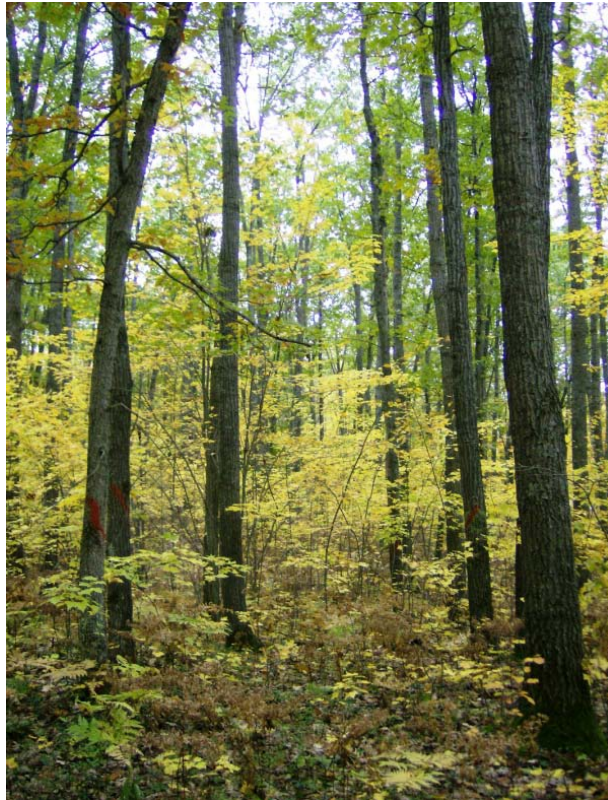
(e.g. scarification, underplanting, direct seeding, herbicide site prep or release, or mechanical release).



What factors determined the level of success?



Overall, what degree of success have you had regenerating oak dominated stands back to a similar degree of oak species representation or dominance?



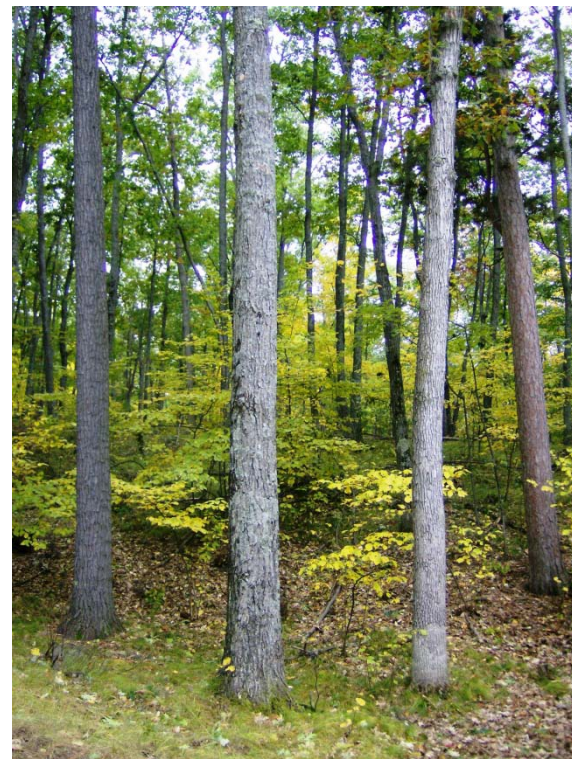
Do you think it is practical to attempt to regenerate stands that would have the same amount of oak in them in the future?

What type of species composition would you see as acceptable in oak stands that end up dominated by other species following regeneration efforts?



Do you think oak could be sustained as a meaningful component in stands dominated by red maple? In stands dominated by RP, WP, or aspen?

What changes in terms of new silvicultural systems and cover type management do you envision on these sites in the future?



What challenges do you foresee as part of mixed species cover type management and/or alternating oak and pine rotations?