

Wanted

Be on the look-out for the

Asian Long-horned Beetle ATTACKING TREES!

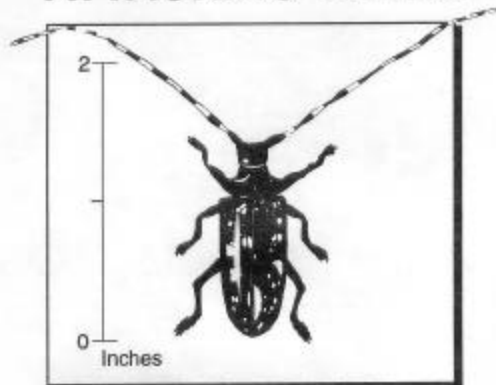


Figure 1. Actual size of the beetle's body is 1-1 ¼ inches.

What to look for:

- ☞ Adult beetles have 1-1 ¼ inch long bodies with 2 inch long antennae. Their bodies are black with white spots, and their antennae are black and white (Figure 1).
- ☞ Large (½ inch) round holes on the branches, trunk, or roots are places where the beetles leave the trees (Figure 2).
- ☞ Where females chew out a spot to lay their eggs, you may see oval, darkened places in the bark (Figure 2).
- ☞ You may find large piles of sawdust around the base of trees or branches caused by beetles exiting from inside the trees (Figure 3).

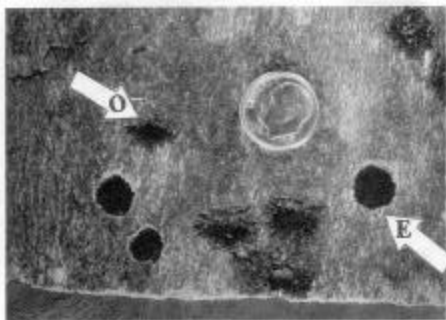


Figure 2. Beetle exit holes (E) and where eggs are laid (O) on a maple tree.



Figure 3. Sawdust from beetles chewing their way out of a tree.

<http://www.aphis.usda.gov>

<http://willow.ncfes.umn.edu/>

http://www.aces.uiuc.edu/longhorned_beetle

<http://ceris.purdue.edu/napis/pests/alb/>

Michigan DNR - Forest Health Marquette - Bob Heyd, 906-228-6561

Wisconsin DNR - Dave Hall (Madison) or county offices?

MSU Extension - County Offices or Bill Cook (906-786-1575 or cookwi@pilot.msu.edu)