



# The Michigan Forester

Published by the Michigan Society of American Foresters

Spring 2006 (Number 59)

From the Chair

## Comments from the Inewl State Chair

Serving your profession is the responsibility of all professionals, including foresters. When I was asked to run for chair-elect I didn't hesitate to say yes, even though I was facing a busy 2006 at work (but then again, who doesn't face a busy year in this era of down-sizing, right-sizing, smart-sizing, and doing more with less). Forestry has given me more than I could ever give back, so it only seemed right to make myself available.

I bring this up because of the membership "crisis" facing SAF. Nationally, membership is down over 25 percent from our peak years, with a 5.5 percent decline over the past two years. Membership in Michigan's chapter has followed similar downward trends. Just to recover to our 2004 Michigan SAF membership level we'd need to enlist 26 new members.

These declines have real impacts. The ability to effect policy change and communicate our message is decreased. Services provided to members are reduced. Dues for remaining members go up. And our position that we represent the full range of the profession is less viable.

When you are asked "why should I belong to SAF?" are you prepared to give a compelling answer? I admit that sometimes when I've been asked that question I've been less than satisfied with my answer.

So let me offer a few suggestions, in no particular order, for addressing that question. I'm sure I'll overlook a few that you've thought of or used, so perhaps you can share those in the next newsletter.

I've already touched on how I believe it's your responsibility to give back to your profession. Being a member and being actively involved in your professional society is one way to give back. You say you already belong to another organization that's more closely aligned to your current employment? That's great. But why not also join and be involved in the organization that represents the broader profession?

### What's inside?

Chair's Comments .....	1
A Letter from the Editor .....	2
State & National News .....	3
Michigan's Forestry Consultants Ad .....	5
Viewpoints .....	7
LP Chapter meeting highlights .....	8
Upcoming events .....	9
M SAF web page highlights .....	10
M SAF financial statement .....	11

We need the full range of experiences, perspectives and viewpoints to be represented in SAF.

SAF provides a wealth of opportunities for networking with your peers. The contacts you'll make and the knowledge and information you'll gain at SAF meetings, field trips, conventions and other gatherings will enrich you both

*(Continued on page 6)*

## A Letter from the Editor

I live and work in Lansing, which means I see a lot of billboards during my short trips back and forth from home to office. These monstrous ads usually become white noise, but one in particular has recently, and consistently, irritated me each day on the way to my cubicle. On the surface, it's innocent enough. It's one of those Smokey Bear ads that says: "Protect our forest friends," which is the generally basic plea to remind us to do our part to prevent fires where they are unwanted. Okay, thanks, I'll remember to keep my cigarette butts in the ashtray as I pass the capitol building (just kidding folks, I don't smoke). But that isn't what bugs me. Maybe I have been asleep at the wheel during the beginning of fire seasons past, but I've never seen Disney's Bambi plastered on these billboard ads before. You've probably seen them too: Bambi and his forest buddies—I think they're names are Thumper and Daisy—all in their verdant green surroundings, smiling down at you as you whiz by at 70+ miles per hour. Just so they stay on the billboard and off the road.

Maybe this tactic does get their point across, but I never have liked anthropomorphizing these critters. In fact, I never have seen the Bambi movie. My poor husband has been subjected to it regularly in the past via his two children, and he says the movie demonizes both fire and hunters in one fell swoop. Of course, we're told not to believe everything we see in the movies, but it still seems that lots of people out there have been influenced by these images. It seems to me that this one well-known cartoon image in particular has really set us

back ecologically. Did Smokey really have to get caught up with this crowd to get his point across? Oops, it looks like I'm doing my share of imposing human characteristics on animals here. Is it unfair of me to blame ol' Walt for my hypocrisy?

Anyway, there's been more talk lately among forestry colleagues about finding ways to get *our* message across concerning the balance between deer populations and healthy forest regeneration. In this specific issue of the *Michigan Forester*, there is a call for opinions on what, if anything, we as a professional forestry community should contribute to the debate. During this upcoming year, I hope we all can search for a clear and reasonable voice for the poor little oak and cedar seedlings out there that need our support.

—Georgia Peterson



Society of American Foresters  
Growing better all the time

### HOW TO SUBMIT ARTICLES TO THE MICHIGAN FORESTER NEWSLETTER

Everyone is welcome to submit articles, photos, ideas or suggestions! E-mail submissions are preferable, but other delivery systems are accepted. Articles should be MS Word documents or compatible format. **All materials for publication should be submitted to:**

**Editor: Georgia Peterson**  
c/o MDNR FMFMD  
PO Box 30452  
Lansing, MI 48909  
Phone: (517) 335-7383  
Fax: (517) 373-2443

#### Issue

Spring/Summer  
Summer/Fall

#### Submission Deadline

June 30  
October 31

## Councilman's Corner

By Bernie Hubbard, SAF District V Representative

Several events occurred this past year that will guide the Society of American Foresters in the coming years. The VOS report, declining membership and the change in how Fellows are nominated and selected were some of the events discussed and acted on by Council. The VOS report was covered in last month's newsletter by Don Dickman so I will talk about the Fellow process and some thought on what can be done about membership.

Fellow nominations – Council made a significant change in the process of Fellow nomination and election. Fellow candidates will be determined by a District Fellows Committee established in each SAF voting district. The committee will consist of at least five fellows, one from each state, multi-state or intrastate society in the District. The committee shall include at least one Fellow elected in each of the preceding three decades and include at least one woman Fellow. The Council representative for each voting district shall appoint the initial members of the District Committee to staggered terms of one to five years. In each succeeding year the District Council representative shall appoint a new District Fellows committee member to a term of five years to replace any committee member whose term had just expired. The Committee term will coincide with the calendar year. No Fellow may serve more than one consecutive 5 year term.

The District Fellow Committee shall remain continuously active and meet by conference call as necessary. It will seek out potential candidates for Fellow from among the voting District members, compile background information on candidates, evaluate candidate criteria for Fellow and recommend to the Council voting district representative nominees from those found qualified. Each Council voting district representative shall forward completed nomination packages for those being recommended for Fellow to the national SAF office in time for their consideration on the agenda of the meeting at which they are to be acted upon by Council. The SAF Council shall review and act on Fellow nominations at a meeting preceding the annual members meeting.

A Council committee is being formed to finalize the process and provide guidelines and a format that will be used by all voting districts. This process is effective immediately and will be used for this year's Fellow nomination. The process and forms are available on the SAF website.

Other issues on the horizon that we need to be aware of concern declining membership and the makeup of the membership. Some of these will be difficult to

*(Continued on page 4)*



resolve as they deal with our future as a professional society. The questions we will be asking ourselves are:

- Who is SAF and more importantly what should SAF become?
- What is a forester and more importantly what should a forester be?
- The overall discussion of being exclusive vs. inclusive. – include other forest natural resource related groups ( fish & wildlife, hydrologists, ecologists, range management )

Do we need a name change? Does the name mean the same to people entering the profession that it does to those of us with a few years under our belts? Does it mean the same to us in 2006 as it did to the founders in 1900?

I do not have answers to the above questions and we need to have a lot of dialogue in the coming year as we decide what the future of SAF will be. Council will be discussing these questions at future meetings and we will have a facilitated session at the spring meeting in Sault Ste Marie to see what direction Michigan SAF wants to go regarding these issues. This is the time to make your views known. Invest some thought into your future and the future of our professional organization. Contact Don Howlett or myself. We need to hear from the membership!

**The Roots of Forestry** is the brand name for SAF's new online archive of all SAF periodical journals from the first issue to 1999. This entails 11,750 articles in 1440 issues of the Journal of Forestry, Northern, Western and Southern Journals of Applied Forestry and Forest Science searchable by author, title and abstract key words. This will be free to SAF members and will be marketed to libraries and institutions for a fee.

**Presidential Field Forester** of the year nominations are due soon so give some thought to someone out there that is carrying the message of forestry and doing an outstanding job of promoting sound, sustainable practices and make that nomination.

Practitioners often operate in nearly complete anonymity, yet their actions are one of the most important and visible contributions to the viability and understanding of our profession. This is where forestry truly happens and it is important that we

recognize those who perform the art and science of forestry each and every day.

There are numerous field foresters who should be recognized for their talent and accomplishments. These deserving individuals can be found in all regions of the U.S. Using presidential prerogative, 11 members - one from each of the eleven SAF districts - will be selected to receive an Outstanding Field Forester Achievement Award yearly. This will ensure that each region of the U.S. will be able to recognize an outstanding field forester.

### **ELIGIBILITY CRITERIA**

- Must be a member of SAF (state year of joining).
  - Must have practiced forestry in the field for at least 10 years.
  - Management intensity may range from very intensive applications to more extensive management regimes.
  - May be from any employment sector.
-

# Michigan's Forestry Consultants... The Stars of Michigan's forests!

**1**

Glen Tolksdorf, CF  
Tolksdorf Forestry  
Calumet, 906-482-9366

**2**

Kevin Burns, CF  
Northwoods Consulting  
Sagola, 906-396-3024

**3**

Dean Francis  
Upper Michigan Land Management and Wildlife Services, Inc.  
Escanaba, 906-786-3488

**4**

Gerald Grossman, CF  
Grossman Forestry Co.  
Newberry, 906-293-8707

**5**

Donald Tracey  
Donald Tracey Forestry Corp.  
Cheboygan, 231-627-4610

**6**

Scott Erikson  
MichiTree, Inc.  
Manistee, 231-723-9946

**7**

Jerry Lambert  
Forest Resource Services  
Frederic, 989-619-2882

**8**

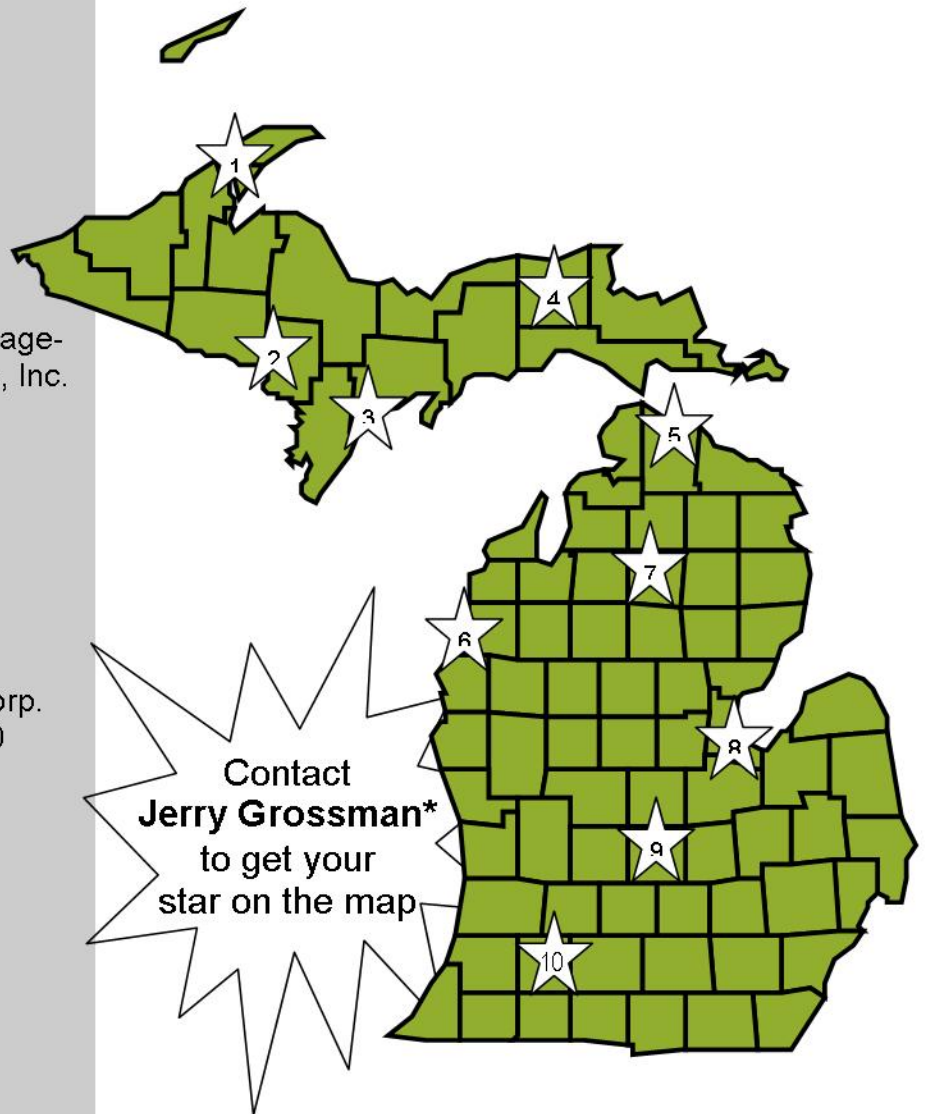
Doug Lee, CF  
Lee Forestry Services  
Auburn, 989-662-0139

**9**

Bill Rockwell, CF  
Plum Line & Metropolitan Forestry Consultants  
St. Johns, 989-224-4600

**10**

Tom Stadt, CF  
Tree Tech Forestry Consultants  
Augusta, 269-760-3565



Contact  
**Jerry Grossman\***  
to get your  
star on the map

**\*Only \$30 for one issue,  
or \$50 for two issues!**

Contact Jerry Grossman  
PO Box 426  
Newberry, MI 49868  
906-293-8707  
gfco@up.net



personally and professionally.

SAF provides you the opportunity to be involved at all levels of the organization. I've been fortunate to serve at the local, state, working group and national levels of SAF. Each of these opportunities has helped broaden my understanding of forestry, given me insight to different perspectives within my profession, and enabled me to work with a diverse group of individuals on topics of personal interest to me.

SAF is responsive as the voice of forestry in America. To those who say SAF isn't effective in representing the profession, I say check out the 2004 SAF Annual Report that's available on the SAF website. The accomplishments are impressive. At the local level point them to the Michigan SAF's 2005 spring conference *Forests & Whitetails – Striving for Balance* (fortunately the planning committee wisely chose this title over the one I suggested, *Deer Gone Wild*). Talk about addressing a hot issue in forestry. Or point to the SAF Auto Tour in the U.P., a very effective communication tool that we've received a number of positive comments on. At the national and local level, SAF is representing forestry and providing quality programming.

SAF has taken a number of steps in the past few years to make the publications available to members more timely and relevant. The *Journal of Forestry* has undergone a number of changes in both content and design. The monthly *Forestry Source* has joined the line-up to provide more timely information. *Forest Science* and the regional journals are being made more available to the membership through the internet.

Some of us in the profession are facing tough financial times. While it is not widely advertised, SAF does provide financial relief to potential members who want to join but are hurting financially.

Some will say that SAF doesn't represent their views or meet their needs. To that I say an organization is only as good as its membership. So join, be a part of the solution, and help shape SAF. Now is the perfect time to join and be involved, as SAF is listening to its members (and non-members) and taking a hard look at what the scope of SAF should be in the future (more on that later).

These are only a few of reasons to join and be

involved in SAF. Check out the "join/renew" link from the SAF website homepage for even more reasons. And again, please share your suggestions in the next newsletter.

This year I've asked our membership committee to put together and implement a plan for contacting former members and encouraging them to rejoin SAF. As a board member of various community organizations I've learned that the main reason people don't give financially or volunteer is because they haven't been asked. So part of this plan will include making personal contacts with these former members. If you're asked to help out in this effort and make a few contacts, please don't say no. SAF is counting on you.

Shifting gears, 2006 should be an exciting year for SAF both nationally and in Michigan. Our spring and fall meetings will continue our tradition of addressing topics of interest to practicing foresters, including a combined fall meeting in Cadillac with the Michigan Prescribed Fire Council. Your state executive committee approved funding to host, along with other partners, a spring tour in the Lansing area for our state legislators.

Nationally, SAF is asking membership to consider "who is SAF?", "what should SAF become?", "what is a forester?" and other core identity questions, along with what actions need to be taken by SAF to support the answers to these questions. At our state meetings this year we'll include time to address these questions so that your opinions are known. I'm particularly interested in this dialogue as I want to represent your views at the House of Society delegates meeting at the 2006 SAF national convention.

Finally, I want to thank Don Dickmann for his leadership during 2005 as Michigan SAF Chair. As chair-elect I had the opportunity to get to know Don and have appreciated his insight and wisdom on the many issues facing SAF and forestry. Again, one of those benefits that I might have missed if I didn't belong to SAF.

—Don Howlett, 2006 Michigan SAF Chair

---

## Oh, Deer! A call for input on possible position statement

The Michigan SAF Executive Team is considering developing a position statement about forest impacts of deer in Michigan and is soliciting feedback from the membership about this idea.

In June 2005, the Michigan SAF held a conference about forest impacts of white-tailed deer. About 200 people attended; a number that we had not seen for many years. The conference was very well received and the evaluations suggested that the Michigan SAF move on something related to forest impacts of deer. For those interested in more information about the conference, visit the Michigan SAF website ([michigansaf.org](http://michigansaf.org)) and find the 2005 conference under the SAF Tours button.

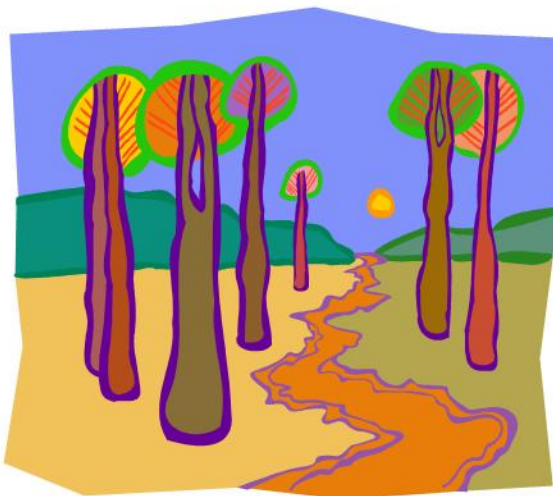
This a great time to let the Executive Team what you think, and even a better time to engage with this important Michigan issue. The Michigan SAF has an opportunity to address one of the most difficult management issues of our time. Members need to give careful consideration and let your voice be heard by the Executive Team.

Should the MSAF proceed with developing a draft position statement for membership review? Please let either Don Howlett (2006 State Chair) or Bill Rockwell (Policy Chair) know your views.

If given the go-ahead by membership, an ad hoc policy group would formulate a draft statement. Relevant expertise would be needed. If you have suggestions of individuals to work with this group, or wish to yourself, please contact either Don Howlett or Bill Rockwell. For information on the SAF position statement development process, visit [www.safnet.org/policyandpress/policyprocess.cfm](http://www.safnet.org/policyandpress/policyprocess.cfm).

The position statement would highlight the science that supports the concern that Michigan has been negatively impacted by deer browsing. This would include the lack of tree regeneration in some regions (e.g. hardwoods, hemlock, and cedar), alternative stable states (e.g. Pennsylvania sedge dominance), forest certification threats, biodiversity loss (e.g. sapling density, Trillium, bead-lily), stand structural change (e.g. loss of shrub layer), and references to the large volume of research that demonstrates impacts of high deer densities on forest ecosystems. The task will not be easy. The position statement may suggest needed research.

Of course, once developed and approved, the position statement would be shared with many organizations, as well as with the DNR, the statutory managers of the citizen-owned deer herd. Clearly, the topic is controversial and will likely generate a fair amount of attention (some heated attention, no doubt). We would like to hear from you!



## The Lower Peninsula Chapter of MSAF and the Walnut Council discuss shared interests during MSU's Agriculture and Natural Resources Week

MSAF's Lower Peninsula chapter met in conjunction with the Walnut Council on the first Saturday of Michigan State University's ANR Week. The morning topic included many speakers on hardwood market values in the Lower Peninsula, while the afternoon topic featured the influence of deer on hardwood regeneration. A good-sized crowd of approximately 30 people attended. Many hope that future ANR Weeks will bring these groups back together for other rich discussions and renewed relationships.

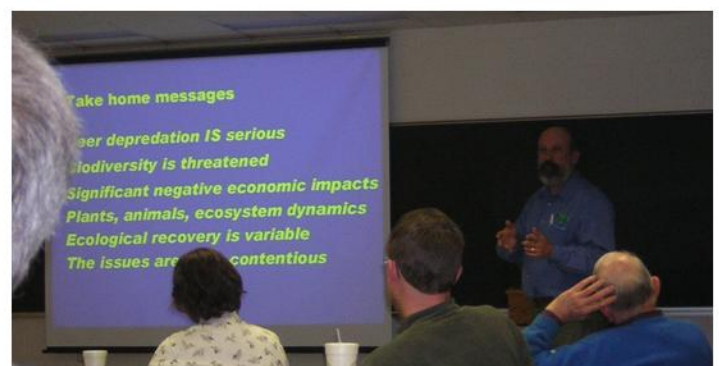


The MSU Natural Resources Building's polar bear (not a native species) warmly greets visitors as they enter.



Karen Potter-Witter and Larry Pedersen (not shown), plus a panel of professionals (L to R: Anthony Weatherspoon, Bob Cool, Bill Botti & Bill Rockwell), discuss the elusive value estimates of hardwood species in the Southern Lower Peninsula.

Take the walnut challenge: One plate contained muffins with English walnuts (*Juglans regia*) and the other contained black walnuts (*Juglans nigra*). Can you tell which is which from this picture?



Bill Cook, our afternoon speaker on deer impacts, offered several take-home messages:

- Deer depredation is serious,
- Biodiversity is threatened,
- Significant negative economic impacts,
- Plants, animals, ecosystem dynamics,
- Ecological recovery is variable, and
- The issues are very contentious.



**2006 Spring Meeting  
Hosted by the UP Chapter of MSAF  
“Feathers in the Forest: Interactions between forestry and birds”**

This spring’s meeting will be designed to foster greater understanding of forest management effects on woodland bird habitats. It will be of interest to foresters, landowners and others who make management decisions affecting the forest.



There will also be field trips offered to locations such as selected locations in the Hiawatha National Forest, Tahquamenon Falls State Park, and or Seney National Wildlife Refuge.

Meeting Venue: LSSU, Sault Ste. Marie, MI.  
Contact: Chris Burnett, 906-226-2461, ext 128, [chris.burnett@macd.org](mailto:chris.burnett@macd.org)

**2006 Spring Legislative Tour  
Lansing and surrounding area  
17 May 2006 (tentative)**

MSAF is partnering with Michigan Forest Association and Tree Farm to provide information on responsible forestry practices to state legislators and their aides. This legislative day will include a tour of private forest property that has been managed over the years. Please note that this tour will not be designed to lobby for certain positions or legislation, only to provide examples of how professional forest management can result in healthy, productive, and sustainable forests. For more information, contact Debra Huff at 517-335-3355 or [huffd@michigan.gov](mailto:huffd@michigan.gov).

**Society of American Foresters 2006 National Convention  
25-29 October 2006  
Pittsburgh, Pennsylvania**

“In 2006, the national convention theme is “Our Woods: Wild and Working.” we believe that forests can remain an important part of our social and ecological landscape, producing both ecological and economic services. If we fail to capture both the wild and working components of forests, society’s demand and new land-use patterns will surely change the landscape so that it no longer meets our nation’s needs and its ecological and social values will decline. Therefore, we encourage you to think about your role in helping to meet a set of services and to continue to do so in sustainable ways...We invite you to come and tell your story.”

—2006 Convention Program Committee





# Michigan Society of American Foresters



*Upper Peninsula & Lower Peninsula Chapters  
Student Chapters at Michigan State University & Michigan Technological University*

<a href="#">Calendar</a>	<a href="#">Business</a>	<a href="#">Forest Information</a>	<a href="#">Teachers</a>	<a href="#">SAF Tours</a>	<a href="#">CFE</a>
--------------------------	--------------------------	------------------------------------	--------------------------	---------------------------	---------------------

## NEW MSAF WEBSITE SERVER

Well all, I think I've done it! It appears the MSAF website has been successfully moved from one server to the other, and the purchased domain name is actually working. The new URL is <http://michigansaf.org>. The former URL <http://forestry.msu.edu/msaf> should have a "linker" page created that will redirect users to the new URL. The linker page should stay on the former server for years. Hopefully, the transition will be seamless.

Please visit <http://michigansaf.org> and let me know if the URL works on your browser. If all seems in order, then I will issue an email note to my lists.

—Bill Cook, Web Techie Extraordinaire



## And now for the fine print... A brief list of current officers

2006 Chair: Don Howlett  
2005 Past Chair: Donald Dickmann  
2007 Chair-elect: Doug Heim  
Secretary: Jason Middlestadt  
Treasurer: Jack Pilon  
District V Representative: Bernie Hubbard

Awards: Craig Kasmer  
Sustainable Forestry Initiative: Ron Scott  
Continuing Forestry Education: Debra Huff  
Membership: Amy Douglass  
LSSU Liaison: Bernie Hubbard  
MSU Liaison: Karen Potter-Witter  
MTU Liaison: Margaret Gale

MSAF Webmaster: Bill Cook  
Policy Team Coordinator: Bill Rockwell  
Communications Team Coordinator: Bill Cook  
Science & Tech Team Coordinator: Les Homan  
Image Coordinator: Roger Misiak  
Newsletter Editor: Georgia Peterson  
Newsletter Business Manager: Bill Hasse

Upper Peninsula Chapter Chair: Chris Burnett  
Lower Peninsula Chapter Chair: Quentin McNichols  
MSU Student Chapter Faculty Advisor: David MacFarlane  
MTU Student Chapter Chair: Margaret Gale  
U of M Student Chapter Chair: John Witter

## Michigan Society of American Foresters

### Year 2005 Financial Status Report

Revenue	Revenue Received as of December 31, 2005
Membership Dues	\$ 3,840.00
Interest	\$ 22.99
Meetings	\$ 2,215.51
Total	\$ 6,078.50

Expenses	Funds Disbursed as of December 31, 2005
HSD	\$ 232.18
Chapter Dues	\$ 554.80
Michigan Forester	\$ 1,250.00
General Administration	\$ 31.40
State Chair	\$ -
MI Forester Editor Honorarium	\$ 200.00
MI Forester Bus Mgr Honorarium	\$ 200.00
Secretary Honorarium	\$ 200.00
Treasurer Honorarium	\$ 200.00
Student Chapters	\$ -
UP Auto Tour	\$ -
National Meetings	\$ 500.00
Donation to National Raffle	\$ -
Leadership Academy	\$ -
Misc	\$ -
CFE	\$ -
Awards	\$ 154.07
Awards Display	\$ -
Membership	\$ -
Communications (display)	\$ -
Policy & Legislative Event	\$ -
Recruit - Reinstate (Image & Outreach)	\$ -
Total	\$ 3,522.45

Total Michigan SAF cash as of	\$ 5,802.60
Total Michigan SAF Education Fund cash as of	\$ 3,315.89
Holdover Forester Fund grant for legislative event	\$ 500.00

Michigan Society of  
American Foresters has  
cash assets only.  
John Pilon, Treasurer

### **Financial Statement**

The table on this page is a summary of all income and expenses incurred by Michigan SAF during 2005.

Any questions about MSAF financial status can be directed to John Pilon, MSAF treasurer, at [pilonj@michigan.gov](mailto:pilonj@michigan.gov).

## SEE YOU IN SAULT STE. MARIE!

Join the UP Chapter as it hosts  
the Spring 2006 meeting:  
"Feathers in the Forest"



---

**SAF** offers a wide variety of opportunities to volunteer and assist in making this the best professional organization around. Take advantage of the benefits you receive from SAF. One easy avenue is to help with the publication of the Michigan Forester. Become a reporter, a photographer or simply help review the content. Contact Georgia Peterson or any other member of the executive team to learn how you can help SAF today.

---

Deadline for the next issue is **June 30th!**



**MISAF  
MICHIGAN FORESTER  
117 WILD RIVER RD.  
IRON RIVER, MI 49935**

**Non-profit Organization  
U.S. Postage  
PAID  
Iron, River, MI 49935  
Permit No. 11**